

What do rainstorm warning signals mean to you?

What do rainstorm warning signals mean to you?

When the  **AMBER** Rainstorm Warning Signal is in force

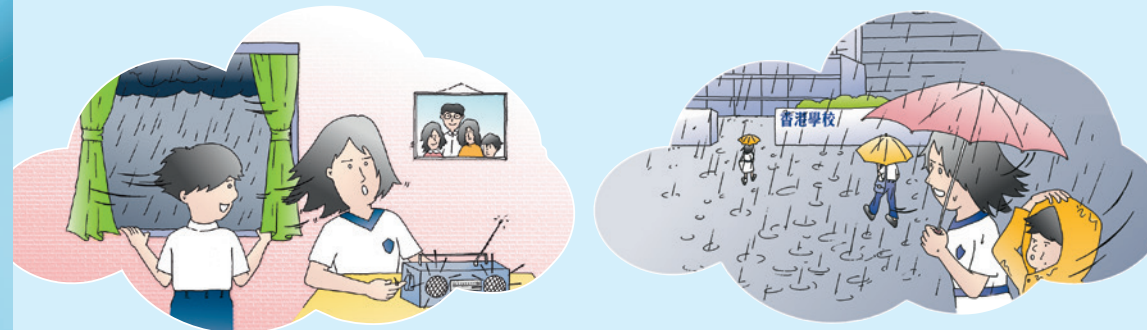
All schools are to operate as usual unless the Education Bureau advised otherwise.

Please listen to radio or TV announcements on the latest weather, road and traffic conditions.

When the  **RED** or  **BLACK** Rainstorm Warning Signal is in force

If signal is issued during the following periods, it means that students **do not need to attend school**.

From 5:30 am onwards and before 8:00 am	AM and Whole-day Schools
From 10:30 am onwards and before 1:00 pm	PM Schools



- Students who have not left for school should stay home.
- Schools should keep their premises open until the end of the normal school hours and implement contingency measures including arranging staff to look after those students who have arrived at school.
- Parents do not need to pick up their children from school immediately.
- If students learn the class suspension announcement on their way to school, they should decide whether to proceed to the school taking into consideration the rain, road, slope or traffic conditions.
- Students who have already arrived at school should remain in school until it is safe for them to return home.

If signal is issued during the following periods, it means that students should **continue the lessons**.

From 8:00 am onwards	AM and Whole-day Schools
From 1:00 pm onwards	PM Schools



- Students should continue the lessons until the end of the normal school hours and return home provided that conditions are safe.
- Parents do not need to pick up their children from school.

Points to note:

- Parents and students should listen to radio or TV announcements on schools and public examinations in the event of rainstorms.
- Parents could exercise their discretion in deciding whether or not to send their children to school having regard to inclement weather, road or traffic conditions.
- Allowance will be given to the affected students for lateness or absence from school at parents' discretion on the day when inclement weather occurs.
- School bus drivers should listen to radio broadcasts on the latest development of the rainstorm and ensure that students are taken to a safe place, usually the school they attend, unless road or traffic conditions ahead are unfavourable.