

油麻地戲院的興衰史

The Rise and Fall of Yau Ma Tei Theatre

Dr. Lee Ho Yin 李浩然博士

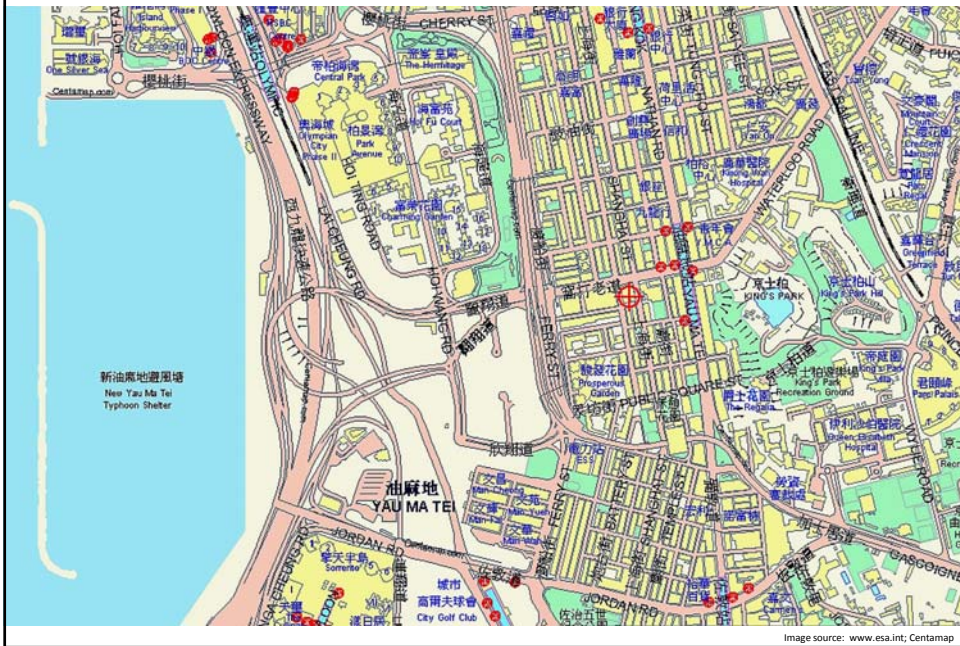
Director, Architectural Conservation Programmes (ACP), HKU
香港大學建築文物保護課程主任

油麻地的歷史
History of Yau Ma Tei

1841的九龍半島尖沙咀 Tsim Sha Tsui, Kowloon Peninsula, 1841



Growth of a city: Yau Ma Tei
Population (2011) = 22,218 inhabitants



Growth of a city: Yau Ma Tei

Origin of name 油麻地 (literally, "land of oil and jute")

Yau 油 = tung oil for sealing boat hull 桐油

Ma 麻 = jute rope for mooring and rigging 黃麻繩



Image source: (top row) www.eyelhand.com; www.hemp.com; (bottom row) www.picturechina.com.cn

Growth of a city: Yau Ma Tei

Kowloon Peninsula, 1860

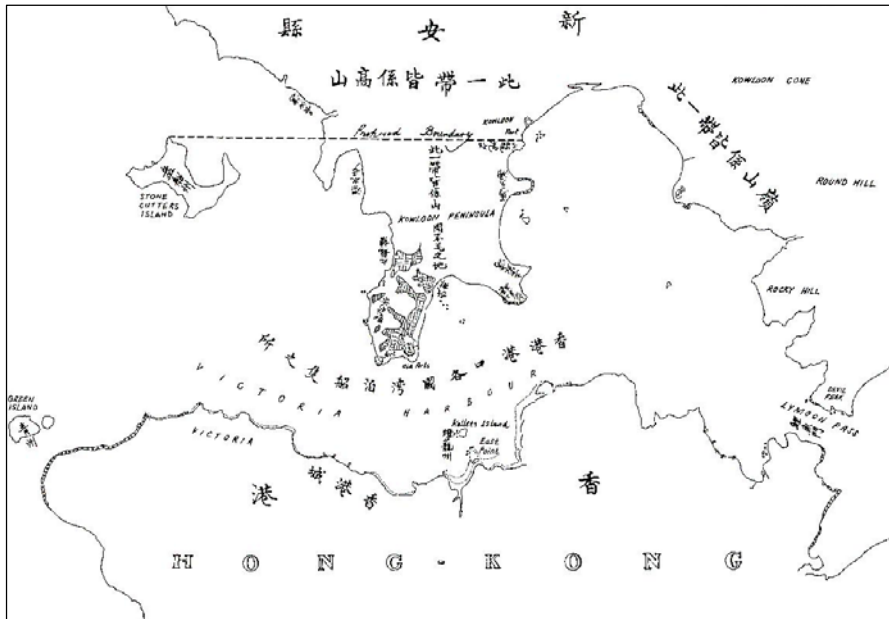


Image source: www.webb-site.com

Growth of a city: Yau Ma Tei
Kowloon Peninsula, 1860

此一帶皆係山



"Around here, there's nothing but hills, a barren land"

Image source: Public Records Office

Growth of a city: Yau Ma Tei

Kowloon Peninsula, 1860 – a "barren land" 不毛之地

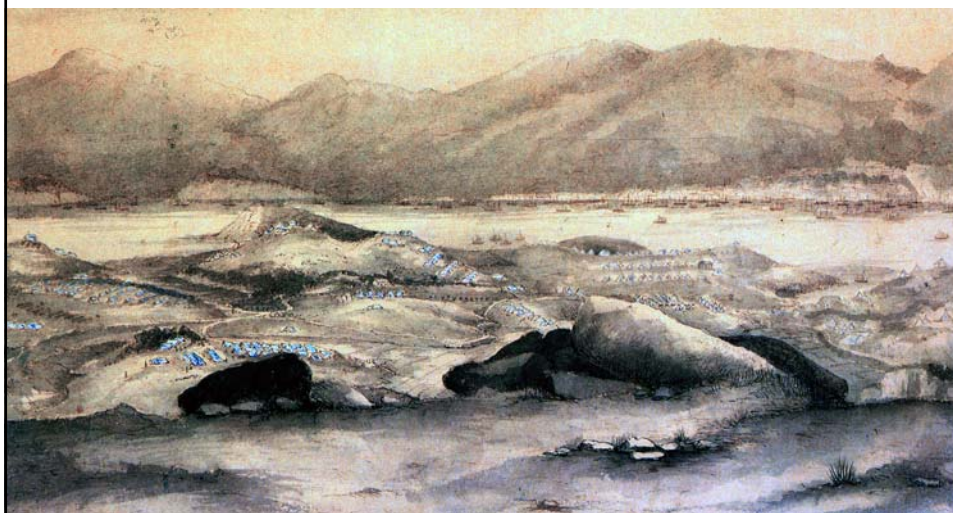


Image source: Hong Kong Museum of Art

Growth of a city: Yau Ma Tei
Kowloon Peninsula, 1860 – a "barren land" 不毛之地



Image source: Gwulo

Growth of a city: Yau Ma Tei
Kowloon Peninsula, 1860 – a "barren land" 不毛之地



Image source: Illustrated London News, 6 Oct. 1860

Growth of a city: Yau Ma Tei

Kowloon Peninsula, 1863 – the growth of a city, starting with infrastructure



Image source: Public Records Office

Growth of a city: Yau Ma Tei

The beginning of Yau Ma Tei (1868 map)



Image source: Information Services Department

Growth of a city: Yau Ma Tei
The town of Yau Ma Tei (1875 plan)

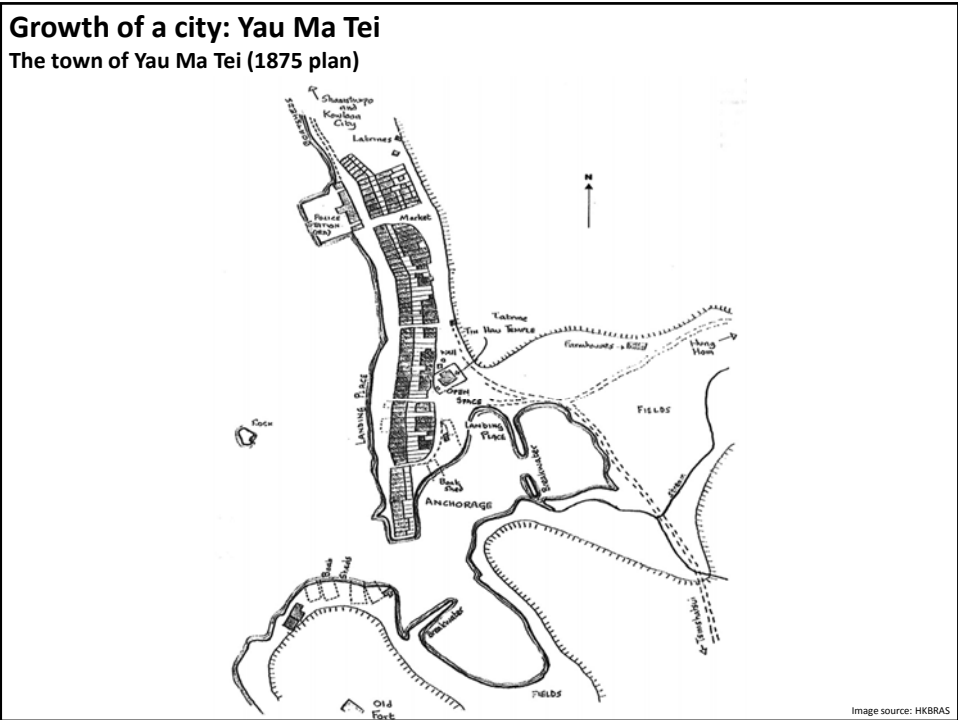


Image source: HKBRAS

Growth of a city: Yau Ma Tei
The town of Yau Ma Tei (1880s photo)

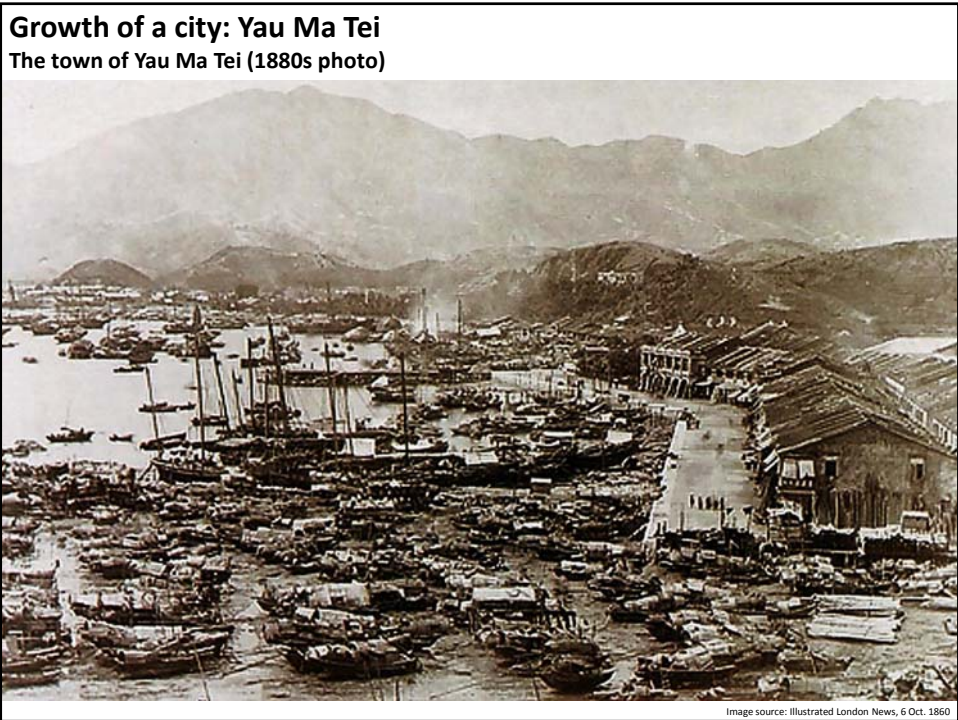
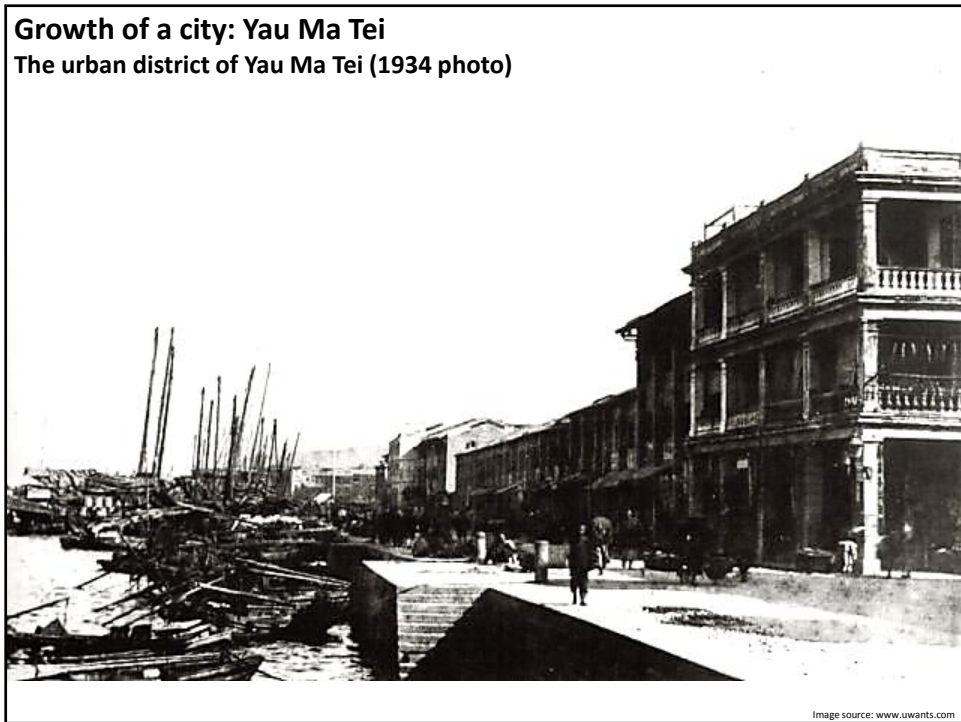
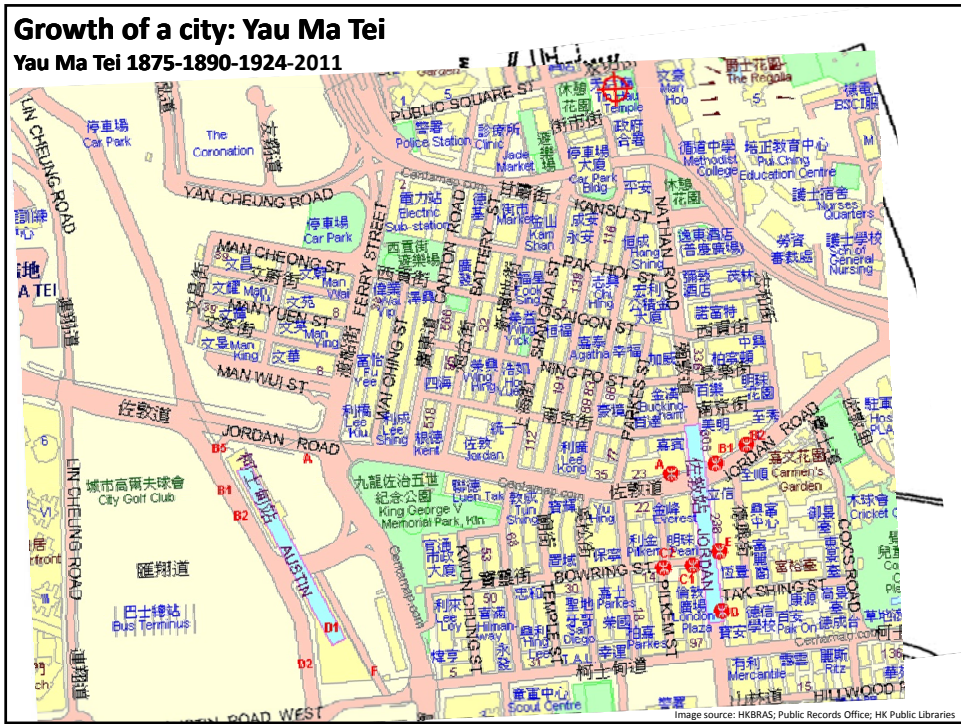
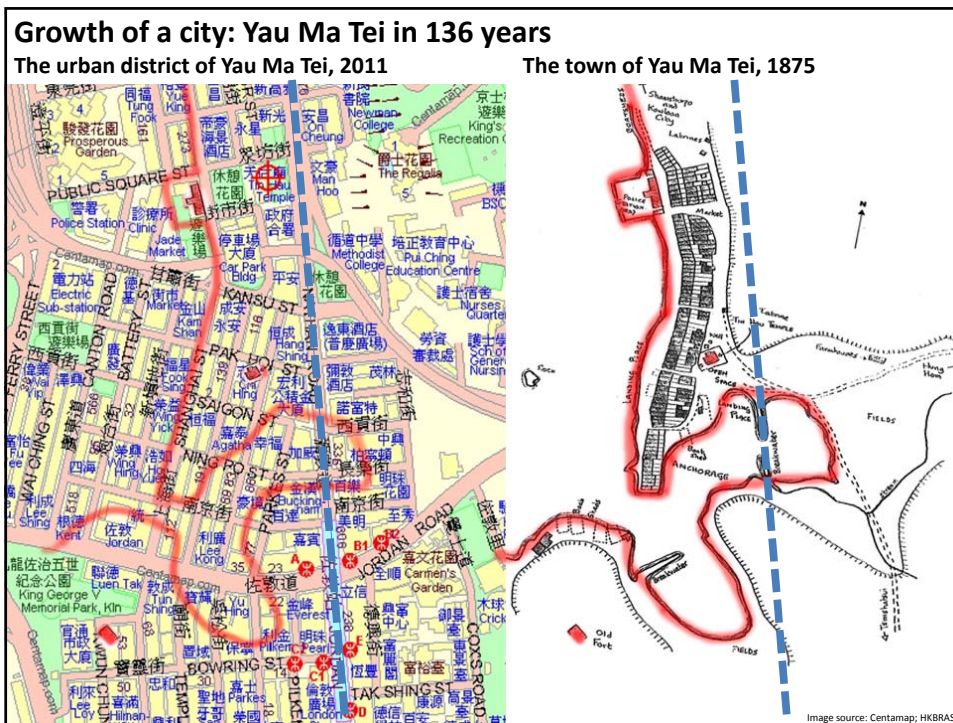


Image source: Illustrated London News, 6 Oct. 1860





2011年的油麻地

Yaumatei, 2011

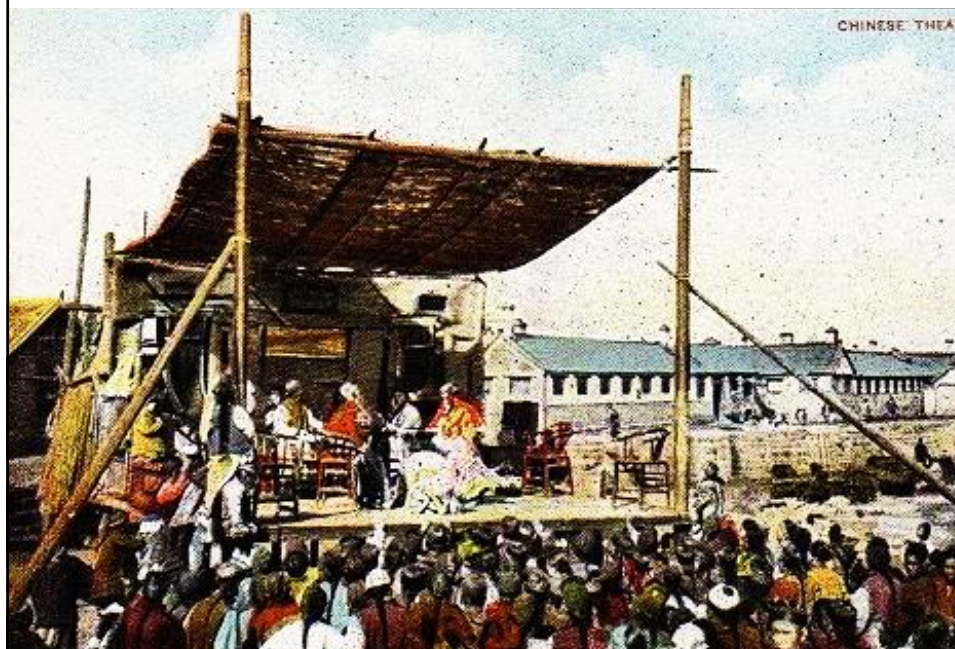
官涌砲台 (臨衝砲台)

尖沙嘴官涌添建砲臺摺
林則徐 (道光20年[1840]3月26日)

奏為籌添建砲臺兩座，以資控制而重海防，恭摺奏祈聖鑒事：

... 尖沙嘴山麓，有石腳一段，其形方長，直對夷船向來聚泊之所。又官涌偏南一山，前有石排一段，天生磐固，正對夷船南洋來路。若兩處各建砲臺一座，聲勢既相聯絡，而控制亦極得宜等語。當經飭令將兩臺高寬丈尺，及開築地平，並建造牆壕礮洞，弁署兵房，神廟望樓，藥局馬路，一切工料價值，覈實確估。據該員等呈送圖說清摺，臣等逐一覈算，並委員詳細稽查，凡有可以撙節之處，復經酌量覈減。計尖沙嘴砲臺估需工料銀一萬七千九百五十一兩零，官涌砲臺估需工料銀一萬四千四十六兩零，實係省之又省，必不能少。

廣東大戲: 未有電影之前的大眾娛樂
Cantonese opera: popular entertainment before the advent of movies



(上演大戲的)戲園: 香港(放映電影的)戲院的前身
Cantonese opera houses: forerunner of Hong Kong's movie theatres (cinemas)



戲院的英文名稱

What's in a name: theatre or cinema?

英國英文 = cinema

美國英文 = movie theatre



美國有荷里活(好萊塢)，係全球電影工業的發源地，即係大 X 晒，所以就算係英國殖民地的香港都要用美國英文的戲院名稱。



西方歌劇院：香港第一代戲院建築的靈感

Western opera theatres: precedent for HK's first-generation cinema architecture



Top: opera theatres in London, New York and Avignon

Bottom: early cinemas in Hong Kong



香港最早的(臨時)戲院
Hong Kong's earliest (temporary) cinema

喜來園
啟者本公司採辦外國異景奇巧明燈戲法不惜工本演
弄時令令人舒懷悅目壯志爽心尙有頂大笙笛鑼鼓洋
琴隨時備便且有壯奇觀之美景也另有山水人物外
國行兵打仗所有各國地面亭臺樓閣一一分明各款奇
花異草野獸與人車馬行走栩栩如生故事太多筆難盡
錄 諸君欲欲見聞幸無失此機會本園在荷李活道大
十八號即塊街口 諸君買票請至本園門口便安
每夜八點鐘起演至拾點鐘左右止
再演三日即往別埠 每位收銀二毫一毛 幼童折半
光緒庚子年 十月初一日 喜來園謹啟

臨時光絃天戲院「喜來園」

專門放映電影的戲院就是1900年11月22日在上環荷李活道68號開業的喜來園影院，每晚8至10時播放一場，內容是一些外國的風光和戰爭紀錄片等的「奇巧明燈戲法」，收費二毫一毛，小童半價。不過這間戲院是臨時方式，主事機構在放映了數天後即轉往別埠。

1901年1月27日，喜來園重來，這次在中環雪廠街近兩洋坡地「錦繡堂」對面繼續放映電影，不過營業11天便結束。

1902年10月24日，喜來園又在荷裡活道140號（文武廟旁）再次公映美國電影，至11月7日為止。

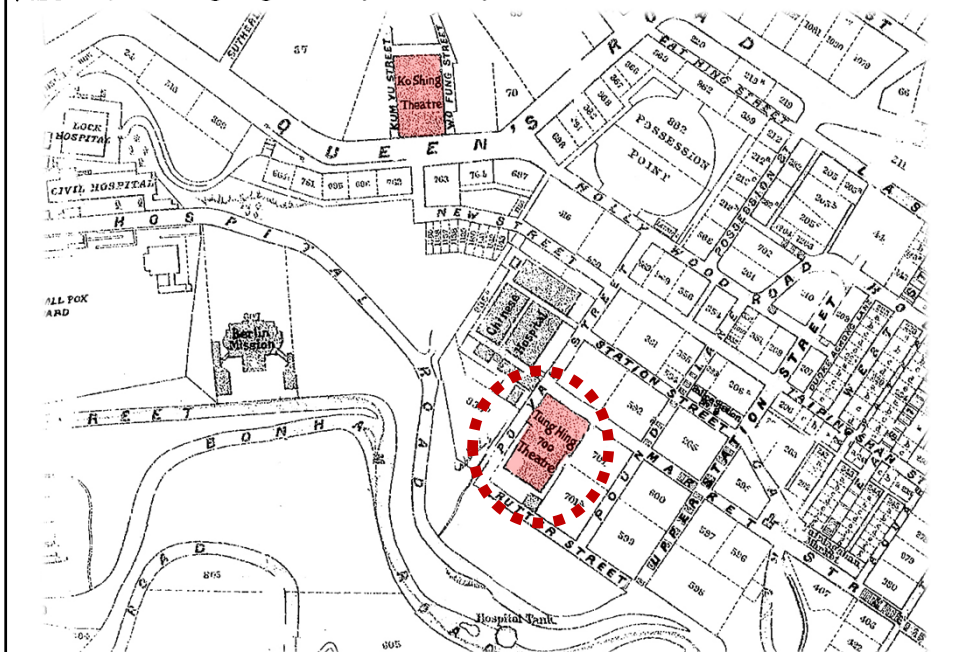
不久之後，又一家名「確生園」的臨時院於12月3日在尖沙咀伊利道街（即打等治花園）開始公映英國紀錄片，共映3天；10天後轉至中環街市對面海傍繼續公映。

12月27日，喜來園與確生園合併，改名為「新喜來」，在中環街市對面海傍營業8天。

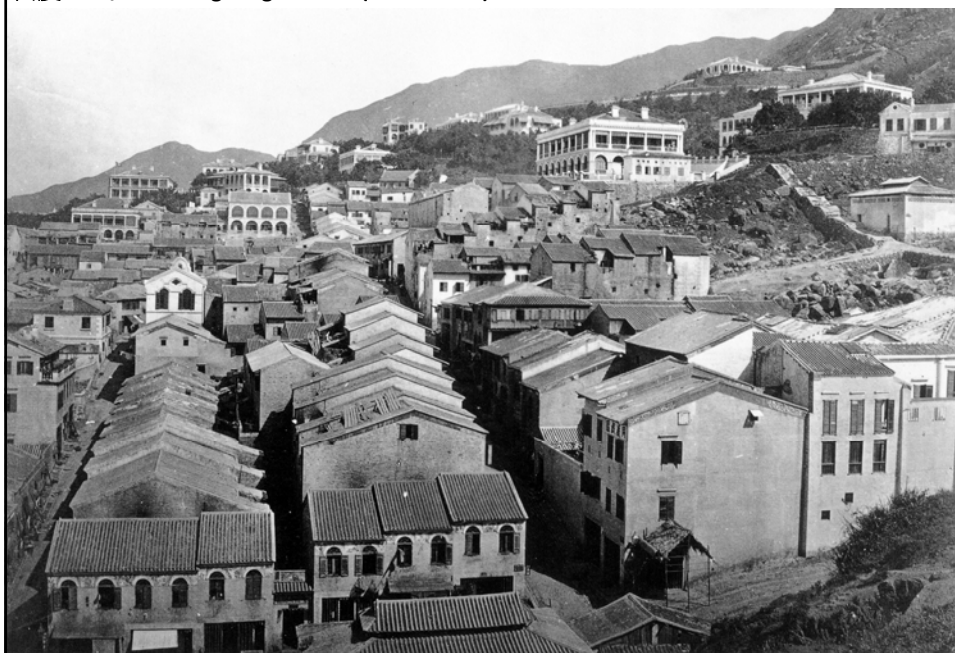
摘自「香港倒後鏡」
<http://blog.yahoo.com/YRFRZGS27R756GS62WTKI75B14/articles/97304>

(光緒庚子年十月初一 = 1900年11月22日，星期四)

香港第一間室內戲園/戲院 Hong Kong's first indoor opera-cum-movie theatre
同慶戲園/戲院 Tung Hing Theatre (1867-1910s)



香港第一間室內戲園/戲院 Hong Kong's first indoor opera-cum-movie theatre
同慶戲園/戲院 Tung Hing Theatre (1867-1910s)



香港第一間室內戲園/戲院 Hong Kong's first indoor opera-cum-movie theatre
同慶戲園/戲院 Tung Hing Theatre (1867-1910s)



香港第一間室內戲園/戲院 Hong Kong's first indoor opera-cum-movie theatre
 同慶戲園/戲院 Tung Hing Theatre (1867-1910s)

1900年2月20日，重慶戲院（前同慶戲園）開始在粵劇演出之後，同場放映電影。而高陞、太平和中央等戲園亦同場加映電影。

重慶園杏同春班

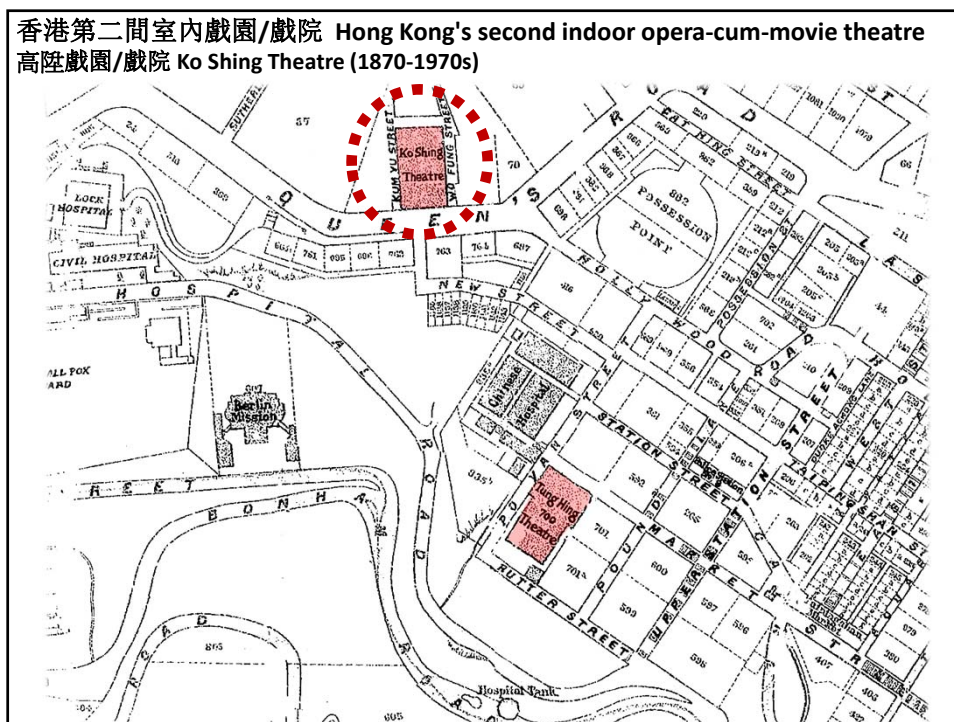
二十日演

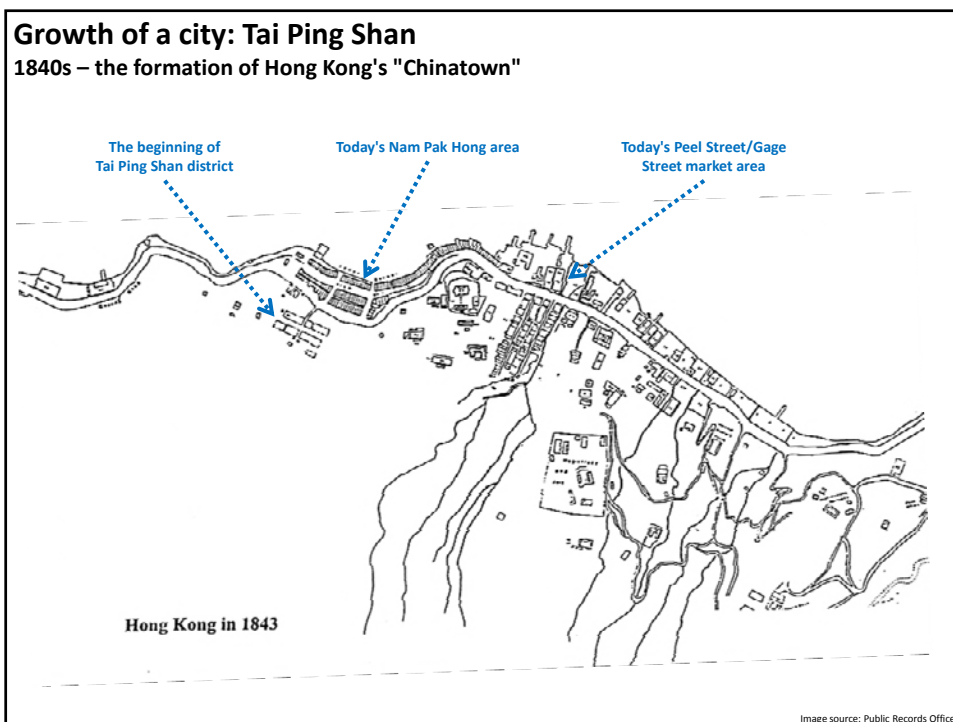
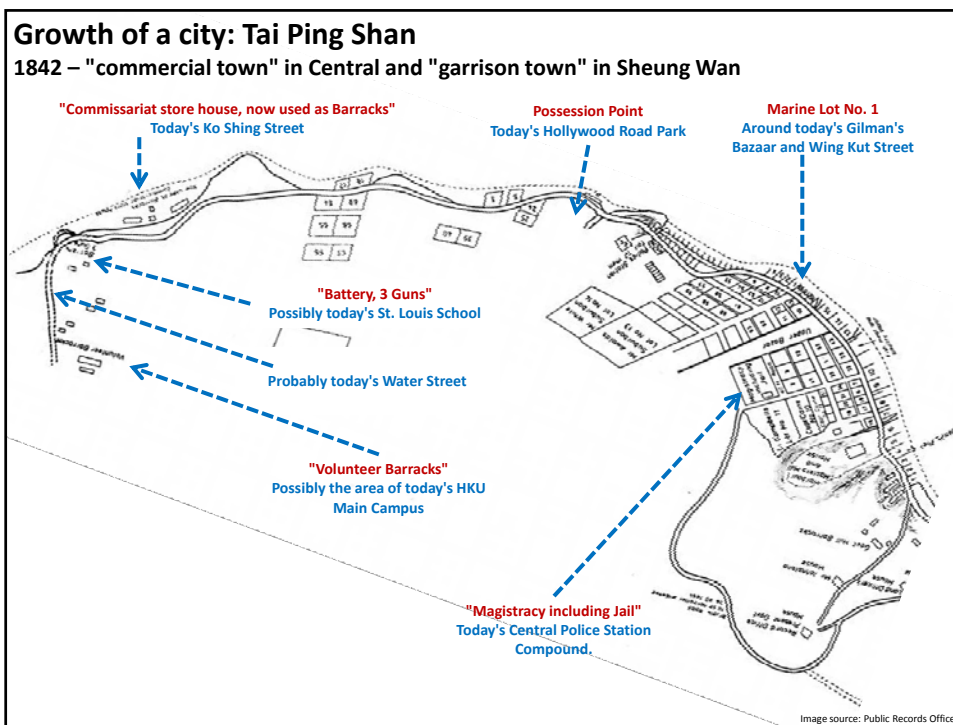
奇巧札脚雙大送子
 ○正本 明珠帶
 ○出題

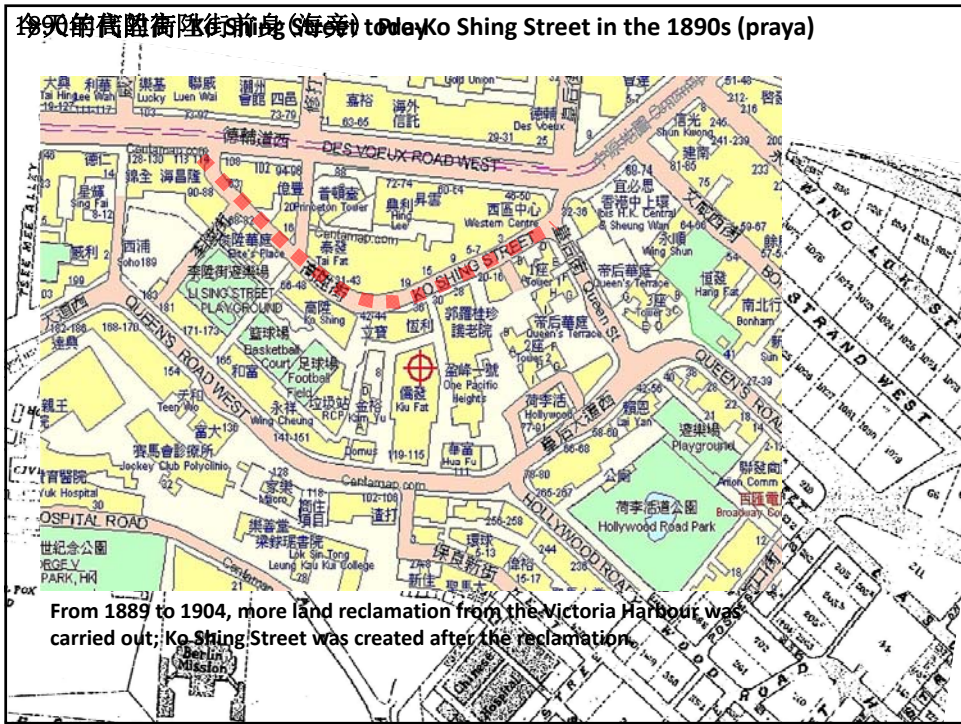
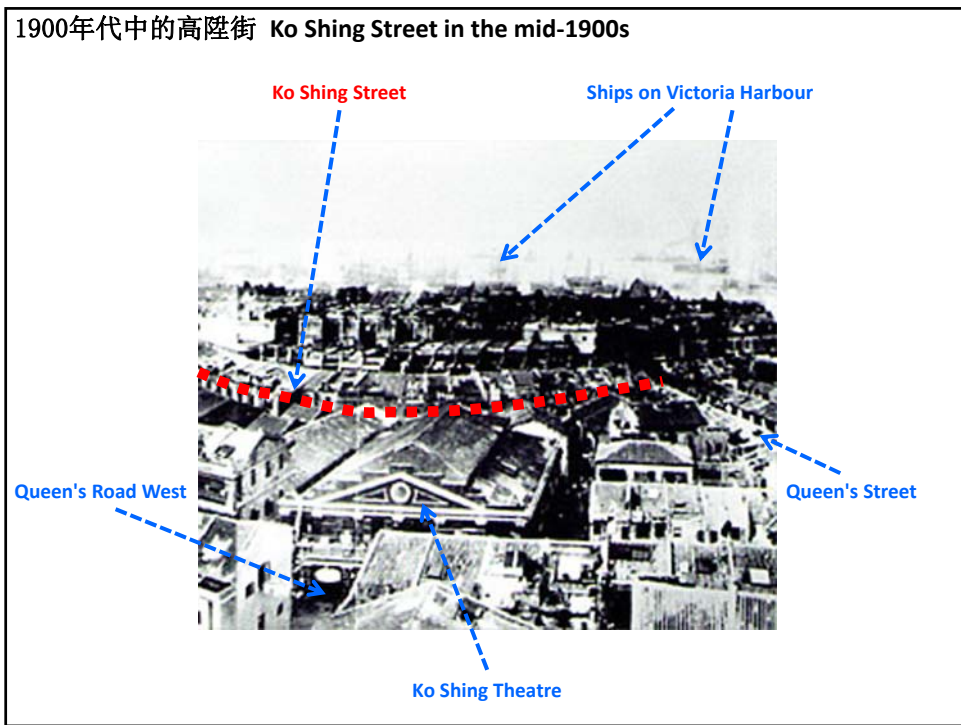
水浸金山
 奇巧洋畫

椅位收銀一毫
 板位收銀三十
 椅位收銀毫半
 板位收銀四十

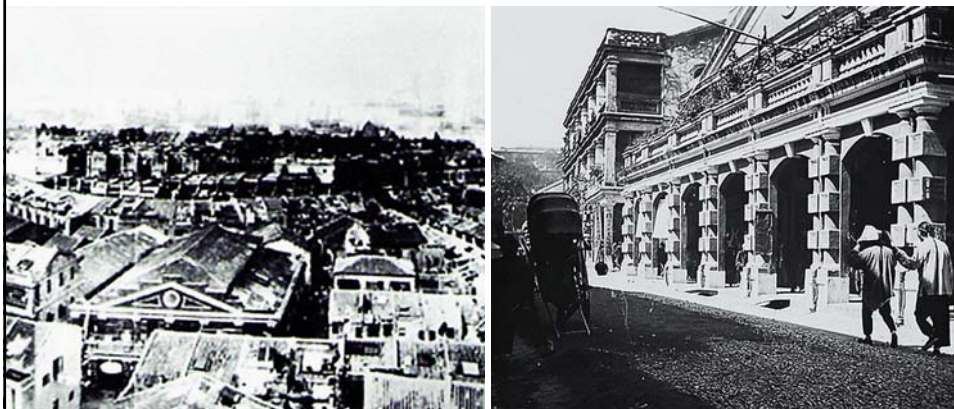
夜日



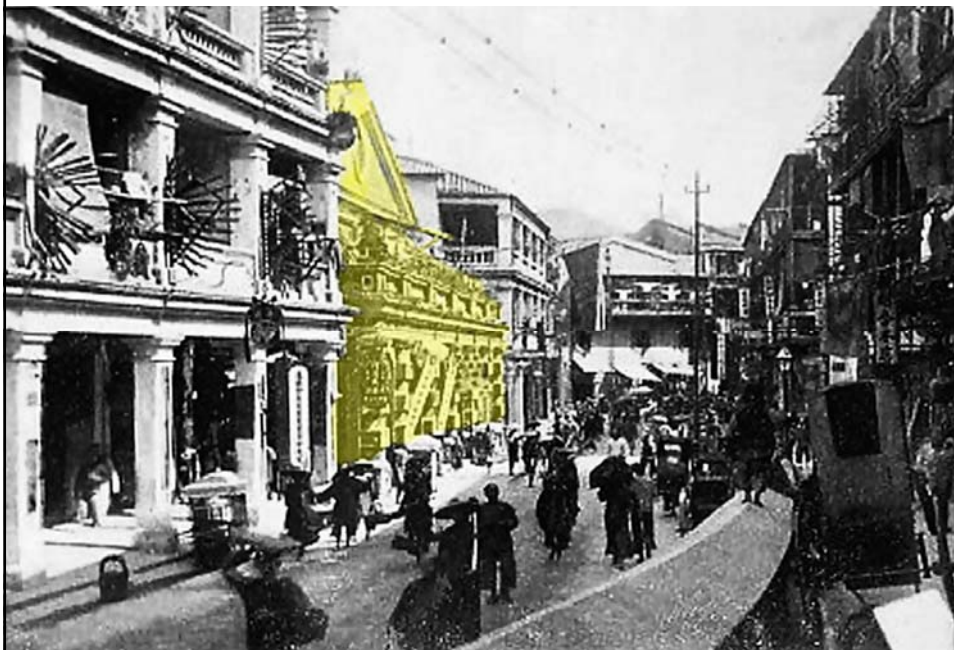




香港第二間室內戲園/戲院 Hong Kong's second indoor opera-cum-movie theatre
高陞戲園/戲院 Ko Shing Theatre (1870-1970s)



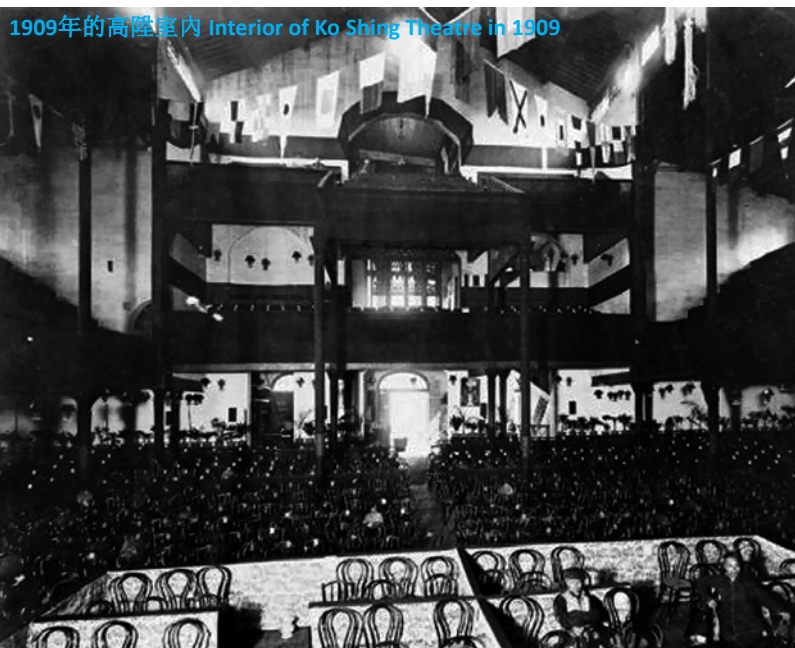
香港第二間室內戲園/戲院 Hong Kong's second indoor opera-cum-movie theatre
高陞戲園/戲院 Ko Shing Theatre (1870-1970s)



1952年一間上演大戲的戲院外牆的花牌
Floral panels outside a Cantonese-opera performing theatre/cinema (1952)



香港第二間室內戲園/戲院 Hong Kong's second indoor opera-cum-movie theatre
高陞戲園/戲院 Ko Shing Theatre (1870-1970s)



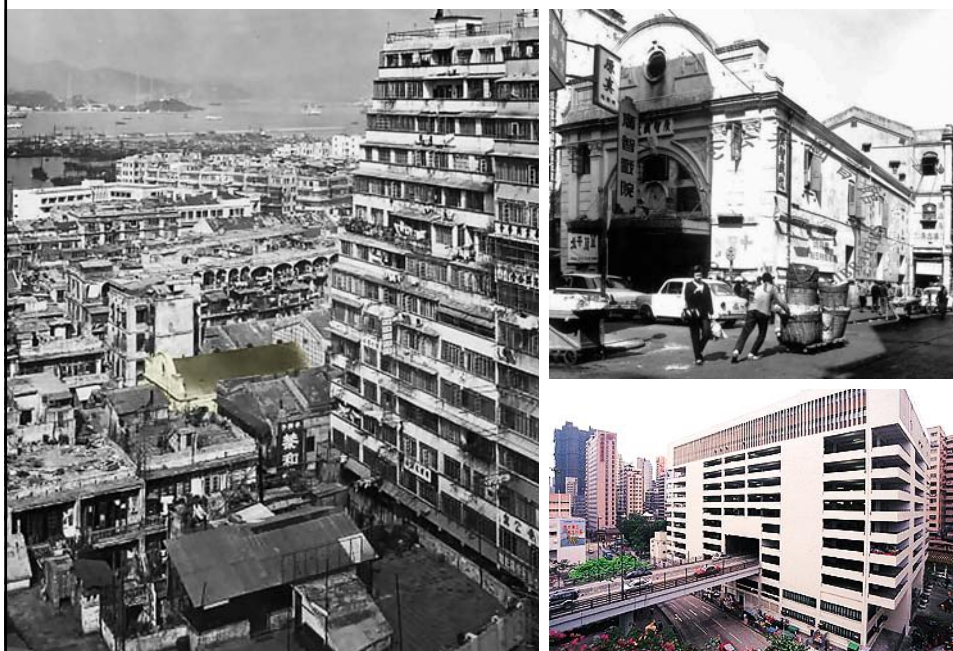
九龍第一間戲院 Kowloon's first cinema
普慶戲院 Po Hing/Astor Theatre: (1代) 1900-1927; (2代) 1928-1955; (3代) 1957-1987 [1,788 座位seats]; (4代) 1990-2000 [at the podium of Eaton Hotel]



九龍第一間戲院 Kowloon's first cinema
普慶戲院現址 - 逸東酒店 Po Hing/Astor Theatre – now Eaton Hotel



油麻地第一間戲院 Yau Ma Tei's first cinema
廣智戲院 Kwong Chee Theatre (1919-1968, 365 座位 seats)

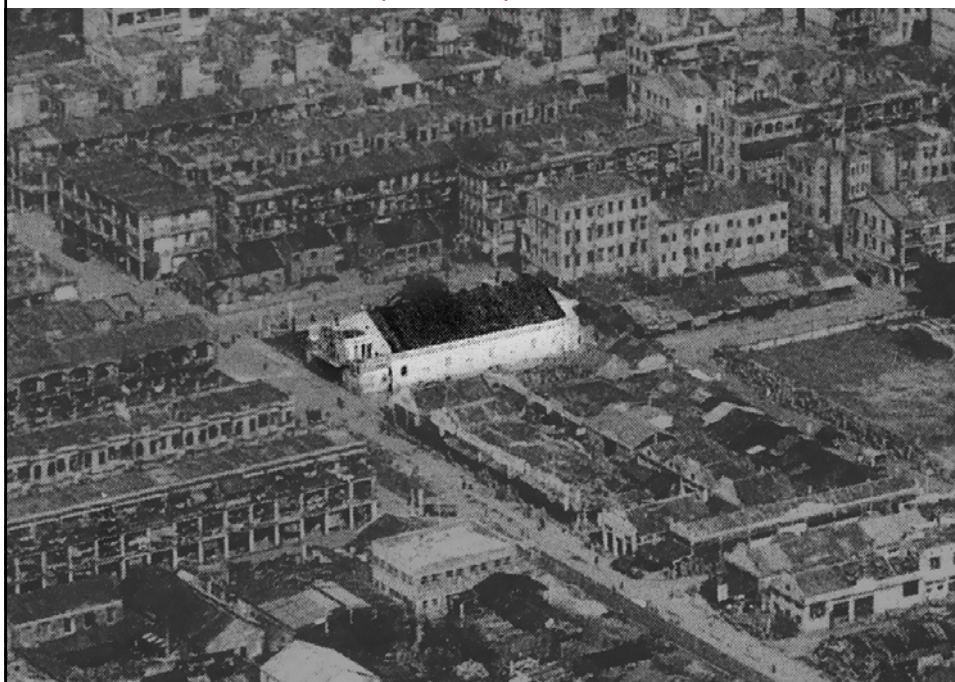


油麻地五大戲院 "The Big Five" movie theatres of Yau Ma Tei

1. 廣智戲院 Kwong Chi Cinema
Temple Street / Kansu Street, 1919 – 1968
2. 第一戲院 F irst Theatre
Pubic Square Street, 1925 – 1960s
3. 大華戲院 Majestic Cinema
Nathan Road / Saigon Street, 1928 - 1940s / 1940s – 1988 / 1992 – 2000
4. 光明戲院 Kwong Ming Theatre
Public Square Street, 1930 – 1960s
5. 油麻地戲院 Yau Ma Tei Theatre
Waterloo Rd / Reclamation St, 1930 – 1998 / 2012 - extant



油麻地戲院 Yau Ma Tei Theatre (1930-1998)



油麻地戲院之三大文物之迷
Three Heritage Mysteries of Yau Ma Tei Theatre

文物之迷一：不明落成日期
Heritage Mystery No. 1: unidentified completion date

油麻地戲院 Yau Ma Tei Theatre
那一年落成? What year of completion?

「油麻地戲院位於窩打老道與新填地街交界，是九龍區碩果僅存的戰前戲院。油麻地戲院建於一九二五年，經歷了二次大戰日本佔領，到六十年代邁進輝煌時期，至八十年代掙扎求存，及後到一九九八年正式結業，體現了香港電影的發展與起跌。」

Excerpt from the 2006 article 〈油麻地戲院〉 by the then Secretary for Home Affairs, Dr Patrick Ho 何志平醫生
(http://www.hab.gov.hk/file_manager/tc/documents/whats_new/from_the_desk_of_secretary_for_home_affairs/shaarticles197_20061214YMT_c.pdf)

WRONG! 錯!

油麻地戲院 Yau Ma Tei Theatre

那一年落成? What year of completion?

"Although the completion date of the cinema is uncertain, there are clues that support the late 1920s completion date. The late 1920s period was a time when Neo-Classicism was on the wane as Art Deco is emerging as the architectural trend of the next decade. The severe Neo-Classical façade of the building, which was once obscured by large advertising panels and other modern decorative elements, featured decorative elements of Art Deco influence. This strongly suggests that **the building was a product of the late 1920s period** when architectural design was caught between architectural trends."

Excerpt from a 2000 report commissioned by the Hong Kong Tourism Association, "Heritage Tourism Development Consent for Yaumatei Theatre and the Surrounding Area," by Lee Ho Yin, Lynne DiStefano and Tiffany Gibbs



油麻地戲院 Yau Ma Tei Theatre

那一年落成? What year of completion?

"Another clue is provided by the manufacturer's labels found on the two vintage film projectors that are still kept in the projection room. Both projectors were manufactured by Strong Electric Corp. of Toledo, Ohio, USA, and one of them bears the patent registration years of 1927 and 1928 (1937 and 1938 on the other projector). Based on this information, **the cinema could have completed and begun operating in as early as 1929.**"

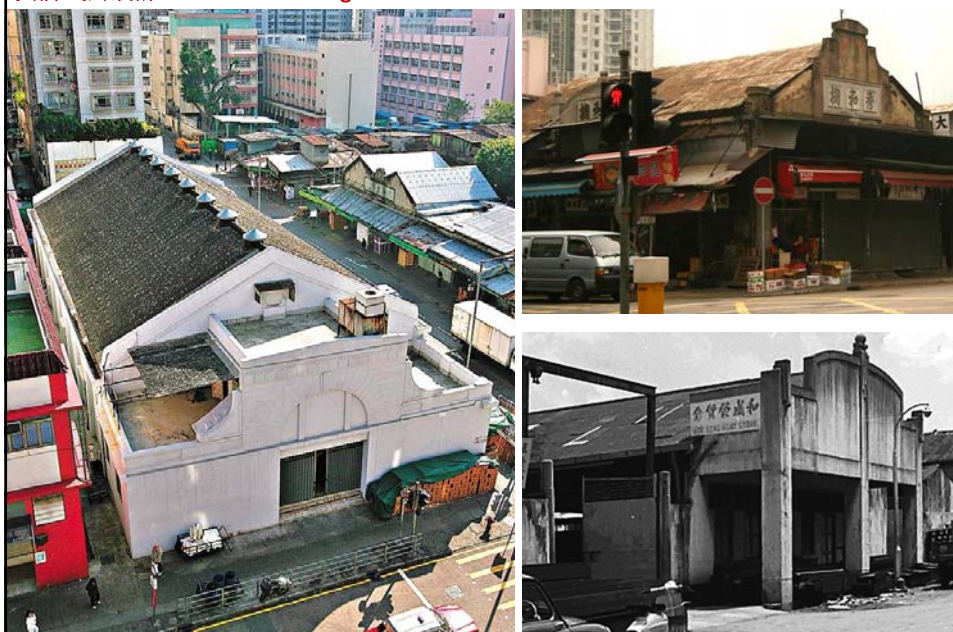
Excerpt from a 2000 report commissioned by the Hong Kong Tourism Association, "Heritage Tourism Development Consent for Yaumatei Theatre and the Surrounding Area," by Lee Ho Yin, Lynne DiStefano and Tiffany Gibbs



文物之迷二:不明建築風格
Heritage Mystery No. 2: unidentified architectural style

油麻地戲院的建築設計 Architectural Design of Yau Ma Tei Theatre

貨倉式的設計 A warehouse design



油麻地戲院 Yau Ma Tei Theatre

什麼建築風格? What architectural style?

"Although the completion date of the cinema is uncertain, there are clues that support the late 1920s completion date. The late 1920s period was a time when **Neo-Classicism** was on the wane as Art Deco is emerging as the architectural trend of the next decade. The severe **Neo-Classical** façade of the building, which was once obscured by large advertising panels and other modern decorative elements, featured decorative elements of Art Deco influence. This strongly suggests that the building was a product of the late 1920s period when architectural design was caught between architectural trends."

Excerpt from a 2000 report commissioned by the Hong Kong Tourism Association, "Heritage Tourism Development Consent for Yaumatei Theatre and the Surrounding Area," by **Lee Ho Yin (李浩然)**, Lynne DiStefano and Tiffany Gibbs

WRONG! 錯!

油麻地戲院 Yau Ma Tei Theatre

什麼建築風格? What architectural style?

什麼是新古典主義建築? What is Neo-classical architecture?

十八世紀中至二十世紀初仿古希臘與古羅馬的宏偉建築設計

Architecture of the mid-18th century to early 20th century inspired by the monumental architecture of ancient Greek and Roman

古希臘與古羅馬神殿 Ancient Greek and Roman Temple



新古典主義建築 Neo-classical architecture



油麻地戲院 Yau Ma Tei Theatre

什麼建築風格? What architectural style?

什麼是新古典主義建築? What is Neo-classical architecture?

十八世紀中至二十世紀初仿古希臘與古羅馬的宏偉建築設計

Architecture of the mid-18th century to early 20th century inspired by the monumental architecture of ancient Greek and Roman

古希臘與古羅馬神殿 Ancient Greek and Roman Temple



新古典主義建築 Neo-classical architecture



油麻地戲院 Yau Ma Tei Theatre

什麼建築風格? What architectural style?

混合古典與裝飾藝術建築元素 Mixed Classical and Art Deco architectural elements

Classical volute pediments 古典建築風格的山形牆



Art Deco stripes 裝飾藝術風格的橫線條



油麻地戲院 Yau Ma Tei Theatre

什麼建築風格? What architectural style?

What is Art Deco? 藝術裝飾風格



Image: latnouveau.com

Art Deco is a decorative style stimulated by the *Paris Exposition Internationale des Arts Decoratifs et Industriels Modernes* 現代工業裝飾藝術國際博覽會 of 1925, and become the dominant architectural style through the 1930s; characterized by sharp angular or zigzag surface forms and ornaments.

Text adapted from Cyril M. Harris (ed.), *Illustrated Dictionary of Historic Architecture* (New York: Dover Publications, 1977), p.32.

油麻地戲院 Yau Ma Tei Theatre

什麼建築風格? What architectural style?

Classical design: popular before the 1930s
1919 Kwong Chi Cinema



Art Deco design: popular from the 1930s to 1950s
1940s Majestic Theatre



油麻地戲院 Yau Ma Tei Theatre

二十年代後期至三十年代初期：建築潮流由古典主義轉變到藝術裝飾風格的過渡時期混合設計
 Mixed-style design in-between transition from Classicism and Art Deco in the late 1920s and early 1930s

Late 1920s and early 1930s Singapore Shophouses



1931 Lui Seng Chun, Hong Kong



油麻地戲院 Yau Ma Tei Theatre

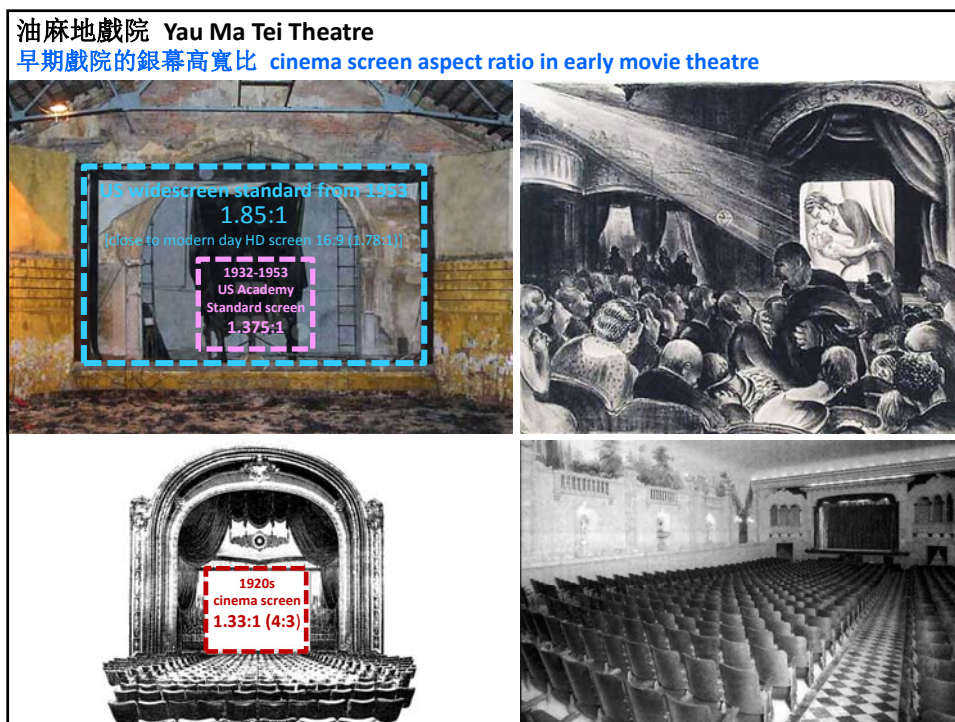
一九三零年混合古典主義與藝術裝飾元素的建築風格
 A 1930 transitional architectural style of mixed Classical and Art Deco elements





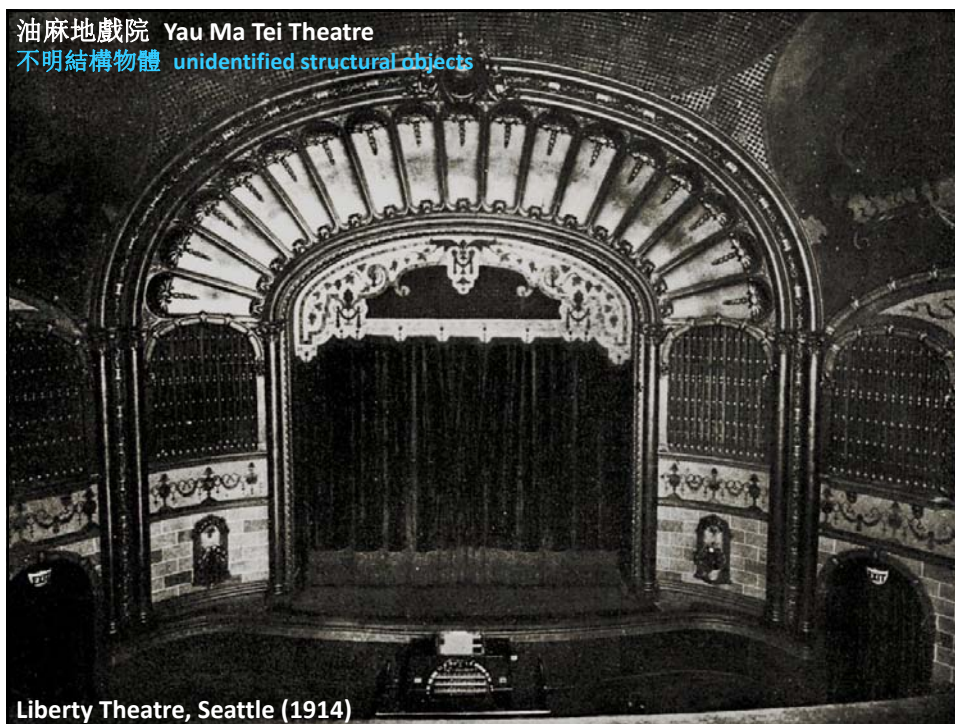


文物之迷三: 不明結構物體
Heritage Mystery No. 3: unidentified structural objects

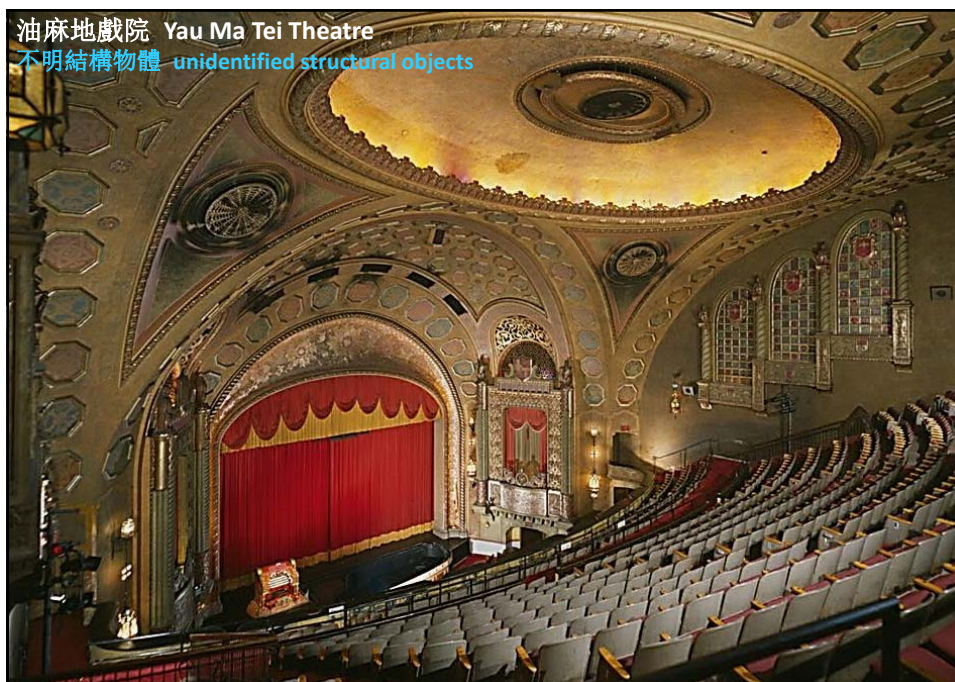




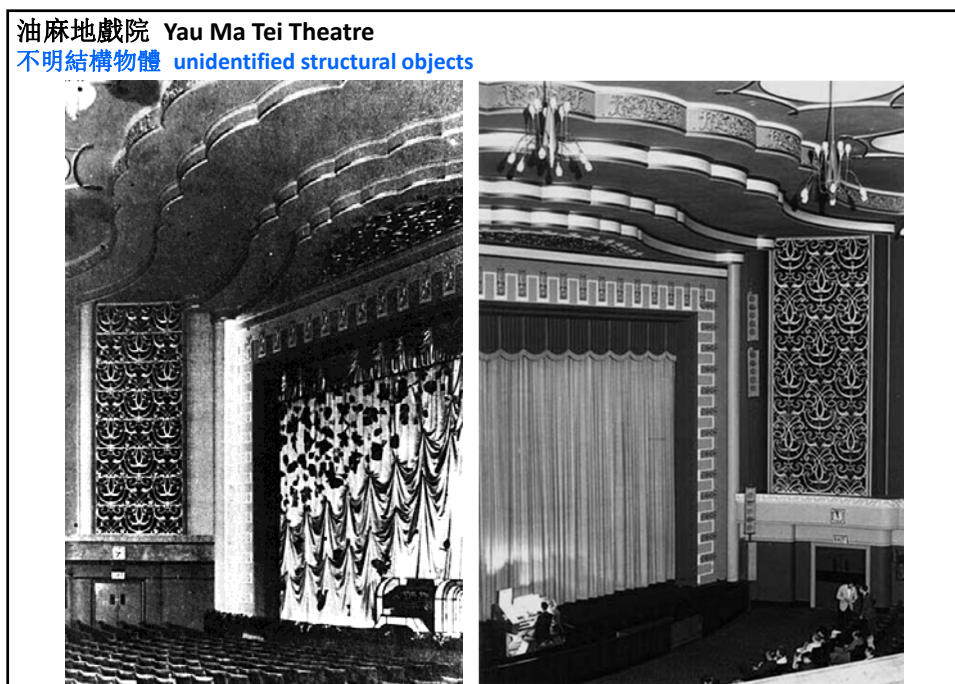
Yau Ma Tei Theatre, Hong Kong (1930) [photo taken in 2007]



Liberty Theatre, Seattle (1914)



Alabama Theatre, Birmingham, Alabama (1927)



The Royal Cinema, Plymouth (1930s)

油麻地戲院 Yau Ma Tei Theatre
不明結構物體 unidentified structural objects



State Cinema, London (1930s)

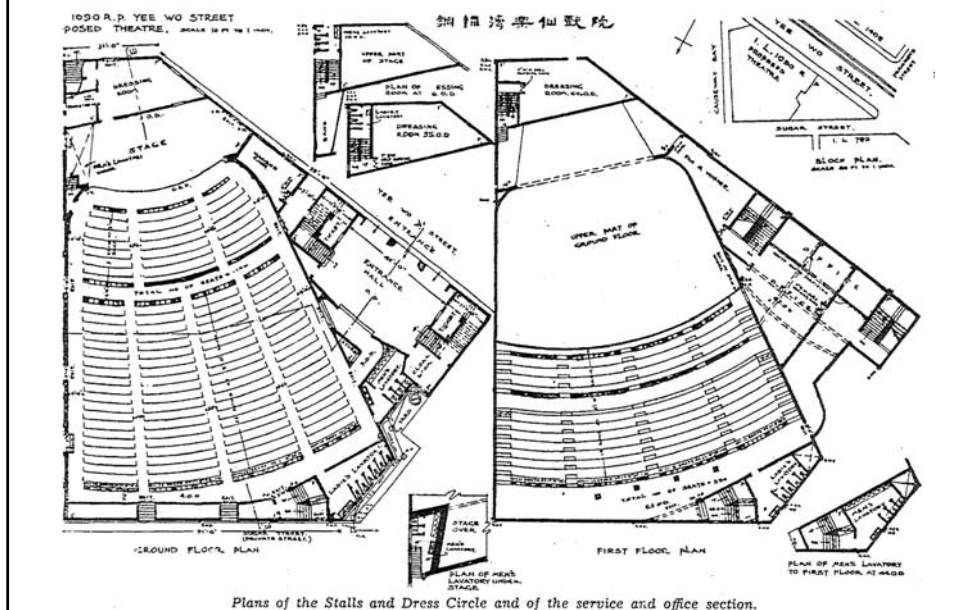
油麻地戲院 Yau Ma Tei Theatre
不明結構物體 unidentified structural objects

樂聲戲院 Roxy Theatre, HK, Causeway Bay (Yee Wo & Sugar Streets) (1949)

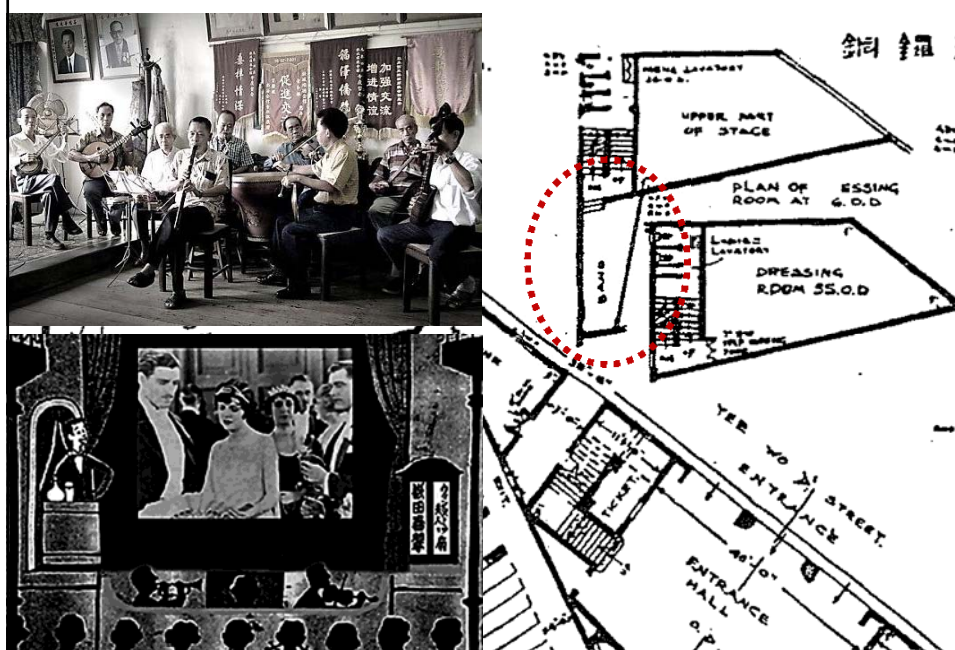


油麻地戲院 Yau Ma Tei Theatre
不明結構物體 unidentified structural objects

樂聲戲院 Roxy Theatre, HK, Causeway Bay (Yee Wo & Sugar Streets) (1949)



油麻地戲院 Yau Ma Tei Theatre
不明結構物體 unidentified structural objects



非物質文化遺產: 消失了的戲院行業
 Intangible Heritage: **bygone cinema professions**

消失了的戲院行業: 電影解畫員
 Bygone cinema profession: movie narrator

聘請解畫員
 茲欲聘請解畫員數人以通
 曉中英文聲音響亮語言伶
 俐者為合格願就者請投函
 信箱(八十二號)封面書明
 (解)字為荷

解畫員
 解畫佬(香港俗稱)
 辯士(臺灣)
 弁士(benshi 日本)

弁士
 【名】
 有口才的人；能說善辯的人；無聲電影的解說員。



1920s advertisement for a movie narrator (Cheng Po-hung)

消失了的戲院行業：電影解畫員
Bygone cinema profession: movie narrator

聘請解畫員
茲欲聘請解畫員數人以通
曉中英文聲音響亮語言伶
俐者為合格願就者請投函
信箱(八十一號)封面書明
(解)字為荷

香港是在1916年開始有解畫員。

當時的一般戲院，如油麻地戲院，通常只有一名解畫員駐場。

較豪華的戲院則會有兩名解畫員，以一唱一和方式同時講解。



1920s advertisement for a movie narrator (Cheng Po-hung)

消失了的戲院行業：電影解畫員
Bygone cinema profession: movie narrator

聘請解畫員
茲欲聘請解畫員數人以通
曉中英文聲音響亮語言伶
俐者為合格願就者請投函
信箱(八十一號)封面書明
(解)字為荷

經典解畫佬爆肚故事

戲院解畫佬向觀眾講述劇情時，經常自由發揮，天馬行空，加鹽加醋。

話說有一解畫佬，看見銀幕中海遠處出現物體，便隨意解說：「海中有大石」。

鏡頭一轉，來個帆船特寫，解畫佬即場爆肚：「忽然變帆船」。

全場觀眾捧腹大笑！

(取材自《懷舊香港地》(1999年吳昊作)，第91-92頁。)



1920s advertisement for a movie narrator (Cheng Po-hung)

消失了的戲院行業：電影解畫員

Bygone cinema profession: movie narrator – revived in Taiwan!

中華民國100年4月12日/星期一 新聞中心專線: 02-23064553 02-23067111 轉5550 傳真: 02-23065924 E-mail: info@mail.chinatimes.com.tw 文化新聞 A12 中國時報

九份昇平戲院重生 辯士說電影

1916年創立、北台灣第一家戲院 16日重新開張 卡米地製作《辯士風華之電影說說看》

在過去三十年電影的歷史中，「辯士」這個職業，曾經是戲院裡不可或缺的一環。他們在電影放映前，會先說一段話，介紹電影的內容，並吸引觀眾的注意。這段話通常充滿幽默感，有時甚至會與電影內容產生有趣的對比。然而，隨著電影工業的發展，辯士這個職業逐漸消失。在九份昇平戲院重新開張之際，卡米地製作公司特別製作了一部名為《辯士風華之電影說說看》的紀錄片，回顧了辯士這個曾經輝煌的職業。

卡米地製作公司負責人表示，他們在製作這部紀錄片時，發現了許多關於辯士的珍貴資料。這些資料不僅展示了辯士的專業技能，也反映了當時戲院文化的獨特魅力。紀錄片通過對老戲院建築的拍攝、對現存辯士的採訪以及對歷史資料的展示，生動地再現了辯士的職業生涯。

此外，紀錄片還探討了辯士與電影之間的關係。在當時，辯士不僅是電影的「導遊」，也是觀眾與電影之間的橋樑。他們的表演往往能引發觀眾的興趣，甚至影響到觀眾對電影的評價。然而，隨著電影工業的成熟，辯士這個職業最終被取代。紀錄片的製作，不僅是為了紀念這個消失的職業，也是為了讓更多人了解戲院文化的歷史。



老戲院 新構段
▲卡米地製作與樂部在重新開張的九份昇平戲院推出製作《辯士風華之電影說說看》，邀請九份黃金年代的辯士風華，聽聽資深戲院老前輩的演出經驗。
▲新北市九份昇平戲院是北台灣第一家電影院。
(卡米地提供)

「辯士」的工作內容與電影製作、發行、放映等過程有著密切的聯繫。他們不僅需要了解電影的內容，還需要具備流利的口才和幽默感。在當時，辯士的演出往往能吸引大量的觀眾，甚至會引發觀眾之間的討論。然而，隨著電影工業的發展，辯士這個職業逐漸消失。在九份昇平戲院重新開張之際，卡米地製作公司特別製作了一部名為《辯士風華之電影說說看》的紀錄片，回顧了辯士這個曾經輝煌的職業。

卡米地製作公司負責人表示，他們在製作這部紀錄片時，發現了許多關於辯士的珍貴資料。這些資料不僅展示了辯士的專業技能，也反映了當時戲院文化的獨特魅力。紀錄片通過對老戲院建築的拍攝、對現存辯士的採訪以及對歷史資料的展示，生動地再現了辯士的職業生涯。

此外，紀錄片還探討了辯士與電影之間的關係。在當時，辯士不僅是電影的「導遊」，也是觀眾與電影之間的橋樑。他們的表演往往能引發觀眾的興趣，甚至影響到觀眾對電影的評價。然而，隨著電影工業的成熟，辯士這個職業最終被取代。紀錄片的製作，不僅是為了紀念這個消失的職業，也是為了讓更多人了解戲院文化的歷史。

消失了的戲院行業：現場配奏樂團

Bygone cinema profession: live band

由20世紀初至到1930年代初，香港(以及全世界)放映的電影只有默片。當時因為科技所限，音響效果只能靠樂師為電影現場配奏音樂與聲音效果。

大型戲院會設有小樂團，即場演奏小提琴、手風琴、風琴、鋼琴等樂器，為默片配樂，有時甚至會為電影配上火車聲、犬吠聲或玻璃破碎聲等聲效，令電影更加有聲有色，是有規模的戲院用來吸引觀眾入場的招數。

1927年第一部有聲電影 The Jazz Singer 導致到默片的急速沒落。到了1935年，香港所有的戲院都放映有聲電影，而默片已經無人問津。為默片現場解畫與配樂的行業亦隨之消逝。

(部份原作，其他摘自〈「香港十大導演」吳回早年曾任解畫人〉(《水銀燈下》，十六)，原文刊登於《大公報》，2011年3月8日。)



1927年的美國阿拉巴馬大戲院 Alabama Theatre, Birmingham, Alabama (1927)

消失了的戲院行業：手繪電影廣告畫師
Bygone cinema profession: movie signboard painter



消失了的戲院行業：舊式戲院帶位員
Bygone cinema profession: old-style cinema usher



油麻地戲院文物: 電影放映機
Heritage of Yau Ma Tei Theatre: movie projector

油麻地戲院文物 Heritage of Yau Ma Tei Theatre
電影放映機 movie projector

"Another clue is provided by the manufacturer's labels found on the two vintage **film projectors** that are still kept in the projection room. Both projectors were manufactured by **Strong Electric Corp. of Toledo, Ohio, USA**, and one of them bears the patent registration years of **1927 and 1928** (1937 and 1938 on the other projector). Based on this information, the cinema could have completed and begun operating in as early as 1929."

Excerpt from a 2000 report commissioned by the Hong Kong Tourism Association,
"Heritage Tourism Development Consent for Yaumatei Theatre and the Surrounding Area,"
by Lee Ho Yin, Lynne DiStefano and Tiffany Gibbs



油麻地戲院文物 Heritage of Yau Ma Tei Theatre

電影放映機 movie projector

戲院大堂的展示品是否油麻地戲院最早期的放映機?
Is the projector on display at the lobby the earliest?



NO! This is a post-war US-made 35mm movie projector, consisting of:

1. Carbon arc lamphouse 碳弧燈箱
Peerless Magnarc
Cinearc Type "G" (first produced in 1951)
2. Sound projector 有聲放映機
Century Model "C" (1940)
3. Soundhead 聲頭
Western Electric (*Westrex*) (licensed to Century)
Model R3 Reproducer (1947)
4. Electric motor 電馬達
Kingston-Conley Electric Co. (Division of *The Hoover Company*)
NEMA M6, 1/6 HP, 115 V, type SB (motors with smooth surface and without overblower), ball-bearing A.C. motor (definitely post-1945, probably 1950s)

油麻地戲院文物 Heritage of Yau Ma Tei Theatre

電影放映機 movie projector

A pair of long-standing favorites

Peerless CINEARC
Selected for many important installations from coast to coast.

Peerless MAGNARC CINEARC
Widely used because of its moderate initial and operating cost.

J. E. McAULEY MFG. CO.
DIVISION OF THE STRONG ELECTRIC CORPORATION
31 CITY PARK AVENUE TOLEDO 1, OHIO

NO! This is a post-war US-made 35mm movie projector, consisting of:

1. Carbon arc lamphouse 碳弧燈箱
Peerless Magnarc
Cinearc Type "G" (first produced in 1951)

ALONGSIDE THESE LAMPS STAND THE WORLD'S FINEST PROJECTIONISTS

Peerless 1-KW TO 70 AMPS
MAGNARC

"HY-AX" ARC MAGNET
"HY-LUMEN" REFLECTOR

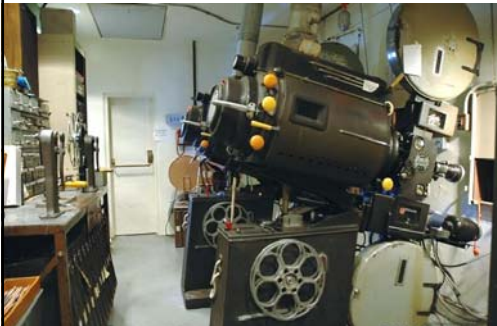
More light at 40 to 70 amperes than ever thought possible. . . . Equals and exceeds one reflector lamp at 40 amperes, whether they be unguaranteed water-cooled or unguaranteed "No-Lens". . . . Highest order of forward screen lenses for use with. . . . at 70 amperes, with an improved "Close-Up" lens for "Close-Up", with a projector having an efficient cooling system, it develops the maximum screen brightness that can be used without a heat lamp or the risk of fire damage. . . . Operating costs under these conditions are far below that of 40-ampere lamps.

Magnarc Lamps among 80's, side-to-center (SAPF) Standard screen light distributors, use a distinctive "HY" or "HY-Center". . . . They are all built to last. . . . They are not insurance hazards. . . . They are and have been for years "The Final Check" of stage and movie theaters, directors, and the motion picture industry.

*Similar results are not guaranteed if all metal reflectors are used.

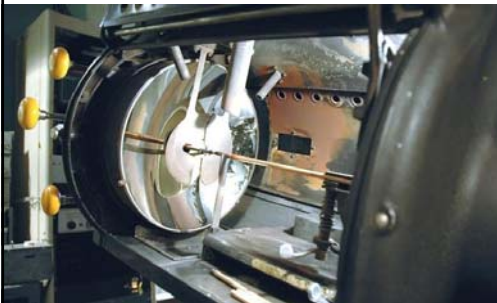

"FIRST WITH THE FINEST"

油麻地戲院文物 Heritage of Yau Ma Tei Theatre
 電影放映機 movie projector



NO! This is a post-war US-made 35mm movie projector, consisting of:

1. Carbon arc lamphouse 碳弧燈箱
Peerless Magnarc
 Cinearc Type "G" (first produced in 1951)

油麻地戲院 Yau Ma Tei Theatre
 油麻地戲院文物: 電影放映機 Heritage of Yaumatei Theatre: movie projector

And you can buy one on-line!

CART - HELP

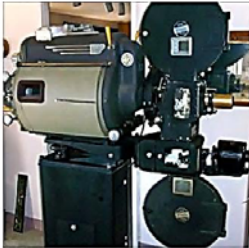
AMERICAN HERITAGE
 50'S MEMORABILIA - ANTIQUES - COIN OP

SEARCH HIT ENTER

TIN SIGNS | STREET SIGNS | FLANGE SIGNS | VINTAGE WOOD SIGNS | ORIGINAL SIGNS | LICENSE PLATES | NUMMERT SIGNS | HOME

CATEGORIES

Peerless 35mm Movie Projector, circa ~~1940's~~ 1950's



Peerless 35mm Projector, circa 1940's, measures 66" tall by 36" long by 24" wide. Operational but offered as a display item only. Used the carbon rods to produce a high intensity arc to create the light intensity to project the image. Includes original films and reels. A Museum quality investment.

Your Price: \$4,500.00

Model Number: HW112

ADD TO CART

Click above for larger image.

SERVICES - SHIPPING - LOCATION - CONTACT

