

## Education Bureau Circular Memorandum No. 118/2021

From: Secretary for Education

To: Supervisors/Heads of all  
Secondary Schools – for  
necessary action

Ref: EDB/CDI/ApL/07-02-21

Date: 25 October 2021

---

### Applied Learning Courses (2022-24 Cohort; 2024 HKDSE<sup>1</sup>)

(Note: This circular memorandum should be read by heads and teachers of all secondary schools.)

#### Summary

The purpose of this circular memorandum is to announce the implementation details for the Applied Learning (ApL) courses (2022-24 Cohort; 2024 HKDSE), and invite schools to offer ApL courses and submit applications for their students.

#### Details

##### I. Basic Information

##### Course Features

2. ApL is a valued senior secondary elective subject which complements other senior secondary subjects to form a flexible subject combination that helps enrich students' subject choices. The courses focus on practical learning elements linked to broad professional and vocational fields with dual emphasis on theory and practice. It develops students' knowledge, generic skills, positive values and attitudes through providing simulated or authentic contexts, as well as deepens students' understanding of vocational and professional education and training (VPET), preparing them for further studies and work in future.

3. ApL covers six Areas of Studies, namely Creative Studies; Media and Communication; Business, Management and Law; Services; Applied Science; and Engineering and Production. In addition, there are courses covering cross Areas of Studies, including Applied Learning (Vocational English)(ApL(VocE)) and Applied Learning Chinese (for non-Chinese speaking students) (ApL(C)), the latter of which is provided exclusively for non-Chinese speaking (NCS) students meeting specified circumstances<sup>2</sup>.

4. For important information such as assessment requirement, attendance requirement and recognition of ApL, etc., please refer to *Annex I*.

5. ApL courses are Category B subjects of the HKDSE. All senior secondary students studying the curriculum prepared by the Curriculum Development Council and published for use in schools by the Education Bureau (EDB) may take a maximum of two ApL courses as elective subjects in

---

<sup>1</sup> HKDSE refers to the Hong Kong Diploma of Secondary Education Examination.

<sup>2</sup> Students who have learned Chinese Language for less than six years while receiving primary and secondary education; or students who have learned Chinese Language for six years or more in schools, but have been taught an adapted and simpler Chinese Language curriculum not normally applicable to the majority of students in local schools.

accordance with their interests and aspirations. NCS students meeting specified circumstances can also take one ApL(C) course. Guidelines for nominating students to take ApL courses and ApL(C) courses are provided respectively at *Annex 2* and *Annex 3*.

6. The duration of each ApL course (except ApL(C)) is 180 contact hours, generally spanning two school years at the senior secondary level, commencing either at Secondary 4 (S4)<sup>3</sup> (to be completed at Secondary 5 (S5); the results will be released in one go with other HKDSE subjects after the completion of the HKDSE at Secondary 6) or S5 (to be completed at Secondary 6 (S6)). The arrangement of ApL(C) course is different. The duration of each ApL(C) course is 270 contact hours, spanning S4 to S6.

### **Modes of Implementation**

7. Schools may adopt the following two non-exclusive modes in implementing ApL courses to suit their school contexts:

**Mode 1:** • **Lessons to be held mainly on Saturdays at the venues of the course providers** and delivered by tutors recognised by the course providers. Schools should arrange their students to attend the lessons according to the timetables set by the course providers.

**Mode 2:** • **Lessons to be held mainly in schools offering courses** and delivered by tutors recognised by the course providers. **Schools have to reach an initial agreement and formulate the implementation details with the course providers, including the timetables, class venues and provision of facilities, etc.**

- **Schools may also consider collaborating with other schools to offer ApL courses with the support of the course providers.** For instance, schools in the same/nearby districts may jointly offer one or more ApL courses with agreed implementation details including timetables, class venues, provision of facilities, etc. to enrich subject choices for their students. Schools interested in offering ApL courses in collaboration with other schools can express their intentions by submitting the form at *Annex 4* to the EDB.

### **Funding Arrangement**

8. Aided, government and caput schools, schools under the Direct Subsidy Scheme and special schools operating senior secondary classes offering the local curriculum are eligible for the Diversity Learning Grant (DLG) for ApL and Student Grant for ApL(C) to offer ApL and ApL(C) courses and pay the course fees charged by the respective course providers. **No** fee should be charged from students. Starting from the 2020/21 school year, if individual students take an ApL course as the fourth elective subject, their schools will also be subsidised by the DLG for ApL to encourage students to take ApL to broaden their learning experiences. In case a student also takes the adapted ApL course(s), each adapted ApL course will be counted as an ApL course in the funding arrangement. Please refer to the funding and accounting arrangements at *Annex 5* and *Annex 6*.

---

<sup>3</sup>The piloting of the early commencement of ApL courses at S4 was first implemented in Mode 2 in the 2013/14 school year. In the 2020/21 school year, in order to take forward the recommendations made in the final report of the Task Force on Review of School Curriculum, the EDB has regularised the commencement of ApL at S4 so that students would complete the 180-hour ApL courses at S5.

## II. Applied Learning Courses offered for the 2022-24 Cohort (2024 HKDSE)

9. Regarding the 2022-24 cohort, i.e. the cohort of students sitting the 2024 HKDSE, the EDB has already approved the offer of a total of 52 ApL courses to schools and students, including two pilot ApL courses, three ApL(VocE) courses and three ApL(C) courses. The course list is provided at *Annex 7*. The course information (including course synopses, key elements in learning and teaching) of the ApL courses will be uploaded to the EDB website ([www.edb.gov.hk/apl/en](http://www.edb.gov.hk/apl/en)) in due course. Contact information of the course providers is available on the EDB website ([www.edb.gov.hk/apl/en/course-providers](http://www.edb.gov.hk/apl/en/course-providers)).



10. Schools may opt for commencing ApL courses at S4. Please see the circular letter issued by the EDB on 5 March 2021 on “Applied Learning Courses (2022-24 Cohort; 2024 Hong Kong Diploma of Secondary Education Examination) Arrangement Details for Early Course Commencement at Secondary 4 in the 2021/22 School Year” ([www.edb.gov.hk/apl/en/circular\\_letter\\_2022\\_24](http://www.edb.gov.hk/apl/en/circular_letter_2022_24)) for the details<sup>4</sup>. For the details of ApL(C) and ApL courses commencing at S5, please refer to this circular memorandum. According to the prevailing arrangement, schools should arrange for students taking the ApL courses (2022-24 Cohort; 2024 HKDSE) to apply for entering the relevant ApL subjects in the 2024 HKDSE at S6 regardless of whether the students commence their study of ApL courses at S4 or S5.



### Pilot Applied Learning Courses

11. To explore the future development of ApL (including greater engagement of industries), the EDB had approved the offer of two Pilot ApL Courses<sup>5</sup>: “Tech Basics” and Multimedia Storytelling”. The organisations participating in the pilot courses include the course provider (the School of Continuing Education of the Hong Kong Baptist University) and all participating schools.

12. “Pilot ApL Course — Tech Basics” has been offered since the 2019/20 school year, please refer to paragraphs 17 and 18 for the application procedures. The “Pilot ApL Course — Multimedia Storytelling” is commencing in the 2021/22 school year; for details on course arrangements at S4 in the 2021/22 school year, please refer to the circular letter issued by the EDB on 13 August 2021 on “Pilot Applied Learning Course — Multimedia Storytelling (for Secondary 4 in the 2021/22 school year; 2024 HKDSE) Details on Course Arrangements” ([www.edb.gov.hk/apl/en/circular\\_letter\\_Multimedia\\_Storytelling](http://www.edb.gov.hk/apl/en/circular_letter_Multimedia_Storytelling)). “Pilot ApL Course — Multimedia Storytelling” will also be offered in Mode 1 in September 2022 for S5 students in the 2022/23 school year (students sitting the 2024 HKDSE); please refer to paragraphs 17 and 18 for the application procedures.



### Applied Learning (Vocational English)

13. ApL(VocE) introduced since the 2020/21 school year, is designed to enhance the learning opportunities of students with diverse learning needs, particularly those who will benefit from a strong practical orientation in English language learning. Through ApL(VocE), students can advance their English communication skills and career-related competencies in simulated applied learning contexts related to work and social situations. **English Language is a core subject under the local senior**

---

<sup>4</sup> While the application for ApL courses commencing at S4 in the 2021/22 school year had already closed and classes have already commenced in September 2021, schools may wish to refer to the circular letter issued by the EDB on 5 March 2021 for general information regarding the arrangement of ApL courses commencing at S4.

<sup>5</sup> Pilot ApL Courses are a part of the CLAP-TECH project that aims to develop a learning pathway with the engagement of industries. The learning pathway starts with students taking “Pilot ApL Course — Tech Basics” or “Pilot ApL Course — Multimedia Storytelling”, and provides an opportunity for those with HKDSE results meeting the minimum entry requirements for sub-degree programmes to articulate to a related Higher Diploma programme.

secondary curriculum<sup>6</sup>; senior secondary students with an interest in VPET may consider taking ApL(VocE) as an elective subject to prepare themselves for further studies or career pursuits. The duration of each ApL(VocE) course is 180 contact hours. For the curriculum framework of ApL(VocE), please refer to the EDB webpage: [www.edb.gov.hk/apl/ApL\(VocE\)](http://www.edb.gov.hk/apl/ApL(VocE)).



14. Students' assessment results in ApL(VocE) are reported in three levels: "Attained", "Attained with Distinction (I)", and "Attained with Distinction (II)" on the HKDSE certificate. **The result in this subject is not deemed equivalent to any level in the HKDSE English Language Examination, nor can it be used as an alternative qualification for English Language.** For the application procedures, please refer to paragraphs 17 and 18.

**Applied Learning Chinese (for non-Chinese speaking students)**

15. ApL(C), introduced since the 2014/15 school year, is designed to provide a simulated applied learning context to help NCS students build a foundation for using Chinese in the workplace and obtain an alternative Chinese language qualification to prepare them for further studies and career pursuits. In the language learning process, students apply listening, speaking, reading, and writing skills in an integrated way and learn the Chinese language in different contexts.

16. Schools admitting NCS students should consider whether to offer ApL(C) courses at S4 taking into account the language ability, interests and aspirations of their NCS students. Please refer to the guidelines for nominating students to take ApL(C) courses at Annex 3, and other relevant information on ApL(C) on the EDB website ([www.edb.gov.hk/en/aplc](http://www.edb.gov.hk/en/aplc)).



**III. Application Procedures and Relevant Information**

**Application Procedures**

17. For application for ApL courses commencing at S4 in the 2021/22 school year, please refer to the circular letter stated in paragraph 10. If schools intend to offer ApL(C) courses for NCS students at S4 and offer ApL courses at S5, please submit applications for their students via the "ApL Module" in the WebSAMS during the following application periods, and arrange the student applicants to participate in the selection arrangements to be announced by the course providers in due course. The application periods are as follows:

<i>Course</i>	<i>Target Student</i>	<i>Application Period</i>
<b>ApL(C)</b>	S4 NCS students intending to take ApL(C) courses in the 2021/22 school year	25 October to 22 November 2021
<b>ApL</b>	Students intending to take ApL courses commencing at S5 in the 2022/23 school year	22 February to 12 April 2022

18. Schools may make reference to the application procedures stated in the "User Manual for the ApL Module in WebSAMS" uploaded on the website: [cdr.websams.edb.gov.hk/](http://cdr.websams.edb.gov.hk/) (path: home page > system documents > user manual > Applied Learning). The important dates on offering ApL and ApL(C) courses are given at Annex 8 and Annex 9.



**Support for Students and Parents**

19. Schools should arrange appropriate activities for both students and parents to deepen their understanding of ApL courses and provide students with guidance on subject selection in order to help them make informed choices. For example, schools may organise talks for students and parents, distribute the ApL course prospectus/leaflet, encourage them to participate in the ApL courses

<sup>6</sup> Under the adapted curriculum for students with intellectual disabilities, English Language is not a core subject.

exhibition, taster programmes and refer to the online resources prepared by the course providers. For the details of the course exhibition and taster programmes, please refer to *Annex 10*.

### **Support for Teachers**

20. To facilitate schools in implementing ApL courses for the 2022-24 cohort, the EDB will organise a briefing session in October 2021, and professional development programmes/seminars for teachers in the 2021/22 school year. Details will be announced through the Training Calendar System in due course.

### **Enquiry**

21. Please refer to the Frequently Asked Questions (FAQs) on ApL and other relevant information on the ApL webpage ([www.edb.gov.hk/apl/en](http://www.edb.gov.hk/apl/en)). For other enquiries, please call the following contact persons:.



- |                                    |   |
|------------------------------------|---|
| (a) General enquiries              | Applied Learning Section (Tel: 3698 3186 )                  |
| (b) ApL(C) – curriculum matters    | Ms Amy LEE (Tel: 3540 7411 )                                |
| (c) ApL(VocE) – curriculum matters | Ms Jane CHENG (Tel: 2892 5454 )                             |
| (d) WebSAMS – technical support    | Systems and Information Management Section (Tel: 3125 8510) |

Ms Joanne WONG  
for Secretary for Education

c.c. Heads of Sections – *for information*

## Important Information on Applied Learning

### Quality Assurance

1. The Education Bureau (EDB) has institutionalised an Applied Learning (ApL) quality assurance mechanism involving the Curriculum Development Council Committee on ApL, the Hong Kong Council for Accreditation of Academic and Vocational Qualifications and the Hong Kong Examinations and Assessment Authority (HKEAA) to ensure that courses are developed according to the design principles; the curriculum is delivered as designed; and the learning outcomes of students can meet the set standards.

### Assessment Requirement

2. ApL courses are Category B subjects of the Hong Kong Diploma of Secondary Education Examination (HKDSE), and there is no public examination for ApL subjects. The assessment of each ApL subject comprises six to ten tasks undertaken within the period of study. Course providers will conduct assessments of respective ApL subjects while the HKEAA is responsible for moderation of the assessment results submitted by the course providers. The moderated results will be recorded on the HKDSE certificate.

### Attendance Requirement

3. Students taking ApL courses are required to attend lessons (e.g. lecture and e-learning) and other learning activities (e.g. application and practice activities, site visits and project learning) arranged by the course providers. Schools should make arrangement to avoid compulsory school activities for students during the ApL lesson time to support their learning, and also remind students to attend ApL lessons punctually. **The minimum attendance requirement of ApL courses is 80% of the total contact hours.** To keep schools informed of students' learning progress and attendance to facilitate the provision of support to students, the EDB will provide interim results and attendance reports of the students to schools.

### Reporting of Performance


4. The reporting of students' performance in ApL subjects (except ApL(C)) is by three levels, namely, "Attained", "Attained with Distinction (I)" and "Attained with Distinction (II)". Performance of "Attained with Distinction (I)" and "Attained with Distinction (II)" are deemed comparable to Level 3 and Level 4 or above of Category A subjects of the HKDSE respectively. **As for ApL(C), student performance is reported as "Attained" and "Attained with Distinction".** For all ApL courses, candidates with performance below the standard of "Attained" or attendance rates below 80% will be designated as "Unattained", which will not be reported on the HKDSE certificate.


### Recognition



5. In addition to the HKDSE qualification, students who have successfully completed ApL courses that are registered in the Qualifications Register as certificate programmes at Qualifications Framework (QF) Level 3 will obtain a QF Level 3 certificate to be issued by the course providers. **ApL(C) is pegged at QF Level 1 to Level 3, whereas ApL(VocE) is pegged at QF Level 2 to Level 3.** Students taking ApL(C)/ApL(VocE) will obtain the respective QF certificate(s) issued by the course providers upon meeting the assessment and attendance requirements of different QF levels of the courses. Details are available on the Qualifications Register website ([www.hkqr.gov.hk](http://www.hkqr.gov.hk)).



## Further Studies and Work



6. For further studies in undergraduate programmes, tertiary institutions in general value the learning experiences that students acquire in ApL. ApL subjects are recognised as elective subjects, or considered for award of extra bonus or additional information, varying by individual institutions, faculties or programmes. For further studies in sub-degree programmes, students with level 2 or above in five HKDSE subjects (including Chinese Language and English Language) are eligible to apply for admission to Associate Degree or Higher Diploma Programmes. In general, each student is allowed to use up to two ApL subjects in the application. For details, please also refer to the relevant websites of individual institutions or the EDB website ([www.edb.gov.hk/apl/en/quality-assurance-and-recognition](http://www.edb.gov.hk/apl/en/quality-assurance-and-recognition)). 

7. ApL(C) provides NCS students with an additional channel to obtain an alternative Chinese Language qualification. **For the purpose of admission to post-secondary education programmes, ApL(C) is in general accepted as an alternative Chinese Language qualification, but it is not considered an elective subject** (please refer to the EDB Circular Memorandum No. 40/2017 for details). Currently, University Grants Committee-funded universities and most post-secondary institutions accept ApL(C) as an alternative qualification in Chinese Language for the admission of NCS students with “Attained” as the minimum grade required. For details on recognition, please refer to the relevant websites of individual institutions or the EDB website ([www.edb.gov.hk/apl/en/quality-assurance-and-recognition](http://www.edb.gov.hk/apl/en/quality-assurance-and-recognition)). 

8. The Civil Service Bureau (CSB) accepts students’ ApL results in the HKDSE (including “Attained” and “Attained with Distinction”, up to a maximum of 2 ApL subjects) in civil service appointments. For details, please refer to the website of CSB ([www.csb.gov.hk/english/info/2170.html](http://www.csb.gov.hk/english/info/2170.html)). The CSB also accepts “Attained” and “Attained with Distinction” in ApL(C) as meeting the Chinese language proficiency requirements of relevant civil service ranks. For details, please also refer to the website of CSB ([www.csb.gov.hk/textonly/english/admin/appoint/35.html](http://www.csb.gov.hk/textonly/english/admin/appoint/35.html)).   


**Guidelines on Nominating Students for Applied Learning Courses**  
(excluding Applied Learning Chinese (for non-Chinese speaking students))





Schools may refer to the following guidelines in nominating students for Applied Learning (ApL) courses:

- For diversified learning, a flexible combination of ApL with core subjects, elective subjects and Other Learning Experiences helps provide theoretical and applied learning opportunities to cater for students' diverse learning needs. Schools should **NOT** prioritise their nominations simply based on students' academic results.
- Schools should provide guidance to students in choosing ApL courses according to their interests and aspirations.
- Each student can apply for **a maximum of two** ApL courses (excluding Applied Learning Chinese (for non-Chinese speaking students)). If applying for **two** ApL courses, students have to list their choices in order of preference. Students have to go through a selection process, after which they may opt to accept offers of **one or two ApL** courses based on their preferences.
- Before collecting students' personal data, schools must seek students' consent by providing all ApL course applicants with the "Student Agreement Form". The form can be downloaded at the EDB website ([www.edb.gov.hk/apl/en/forms-download](http://www.edb.gov.hk/apl/en/forms-download)). The completed forms should then be collected for retention. In accordance with the Personal Data (Privacy) Ordinance, schools should ensure that all students' personal data can only be handled by authorised personnel of the schools. 
- For students with **special educational needs**, schools may opt to submit supplementary information, along with their applications for ApL courses, for reference of the course provider(s) concerned. The form can be downloaded from the website of the Education Bureau (EDB) ([www.edb.gov.hk/apl/en/forms-download](http://www.edb.gov.hk/apl/en/forms-download)). The completed form should be sent to the EDB via fax at 2714 2456 for transmission to the course provider(s) concerned as reference. The course provider(s) may contact schools to make special arrangements for selection interviews if deemed necessary. The EDB encourages schools to keep in close contact with the course providers about the special educational needs of students, so as to support student learning in the ApL courses. 



## Guidelines on Nominating Students for Applied Learning Chinese (for non-Chinese speaking students)

Schools may refer to the following guidelines in nominating students for Applied Learning Chinese (for non-Chinese speaking students) (ApL(C)):

- ApL(C) is introduced to provide an additional channel exclusively for **non-Chinese speaking (NCS) students** meeting specified circumstances to obtain an alternative Chinese language qualification to prepare them for further studies and career pursuits.
- Specified circumstances are students who have learned Chinese Language for less than six years while receiving primary and secondary education; or students who have learned Chinese Language for six years or more in schools, but have been taught an adapted and simpler Chinese Language curriculum not normally applicable to the majority of students in local schools.
- ApL(C) **emphasises application and practice, taking daily life or vocational areas as learning context**, schools should assist NCS students in considering applying for ApL(C) according to their language ability, interests and aspirations, and provide guidance and support for NCS students in choosing the appropriate Chinese language curriculum. Each NCS student can take **one ApL(C) course only**.
- NCS students who aspire to study ApL(C) should have basic language competency to enable them to learn the Chinese language through different modes of activities in a simulated applied learning context. At the point of entry for the study of ApL(C) courses, they are expected to have achieved most of the learning outcomes of the “Chinese Language Curriculum Second Language Learning Framework” (“Learning Framework”) at level 4 or above. Upon completion of courses, NCS students are expected to have achieved the relevant learning outcomes of the “Learning Framework” at level 6 or above. Details of the Learning Framework are available at the website of the EDB ([www.edb.gov.hk/tc/curriculum-development/kla/chi-edu/second-lang.html](http://www.edb.gov.hk/tc/curriculum-development/kla/chi-edu/second-lang.html)). 
- Before collecting students’ personal data, schools must seek students’ consent by providing all ApL course applicants with the “Student Agreement Form”. The form can be downloaded at the EDB website ([www.edb.gov.hk/apl/en/forms-download](http://www.edb.gov.hk/apl/en/forms-download)). The completed forms should then be collected for retention. In accordance with the Personal Data (Privacy) Ordinance, schools should ensure that all students' personal data can only be handled by authorised personnel of the schools. 
- For students with **special educational needs**, schools may opt to submit supplementary information, along with their applications for ApL(C) courses, for reference of the course provider(s) concerned. The form can be downloaded from the website of the Education Bureau (EDB) ([www.edb.gov.hk/apl/en/forms-download](http://www.edb.gov.hk/apl/en/forms-download)). The completed form should be sent to the EDB via fax at 2714 2456 for transmission to the course provider(s) concerned as reference. The course provider(s) may contact schools to make special arrangements for selection interviews if deemed necessary. The EDB encourages schools to keep in close contact with the course providers about the special educational needs of students, so as to support student learning in the ApL(C) course. 
- For details of ApL(C) courses, please refer to the ApL(C) website ([www.edb.gov.hk/en/aplc](http://www.edb.gov.hk/en/aplc)). 



**III. Information of the ApL Courses to be Offered in Collaboration with Other Schools**

Course provider			
Course name		Estimated no. of students	
Start date (month/year)		End date (month/year)	
Remarks (Please put a “√” in the appropriate box.)	<p>1. Has your school already reached an initial consensus with other school(s) in offering the ApL course through collaboration?</p> <p><input type="checkbox"/> Yes                      <input type="checkbox"/> No</p> <p>2. Is your school willing to provide venues/facilities for conducting ApL lessons for students of other schools?</p> <p><input type="checkbox"/> Yes                      <input type="checkbox"/> No</p>		

**IV. Information of Collaborating Schools (if applicable)**

School name	Host school (Use “√” to indicate)	No. of students
1		
2		
3		
4		

**V. Other suggestions/ views (if applicable):**

--

## Funding and Accounting Arrangements for Diversity Learning Grant for Applied Learning (2022-24 Cohort; 2024 HKDSE)

### Diversity Learning Grant

1. The Diversity Learning Grant (DLG) supports aided, government and caput schools, schools under the Direct Subsidy Scheme (DSS) and special schools operating senior secondary classes, in offering a diversified local curriculum to cater for students' needs. It is a cash grant for aided secondary schools, caput schools, DSS secondary schools and special schools. For government secondary schools, it is in the form of budget allocation.
2. The DLG for Applied Learning (ApL) will be provided to eligible schools on a yearly basis for the implementation of ApL courses provided by the course providers and approved by the Education Bureau (EDB). Schools receiving the grant are NOT allowed to charge students any course fees. To streamline school administration, schools are no longer required to draw up a three-year plan on broadening subject choices for a particular cohort of students.

### Ambit

3. Students in eligible schools studying the senior secondary curriculum prepared by the Curriculum Development Council and published for use in schools by the EDB and studying ApL courses are subsidised under the DLG for ApL<sup>7</sup>. Each eligible student is entitled to funding for **a maximum of two** ApL courses (excluding Applied Learning Chinese (for non-Chinese speaking students)). In addition, from the 2020/21 school year onwards, if individual students **take an ApL course as the fourth elective subject, the school will also be subsidised by the DLG for ApL**<sup>8</sup>.
4. The DLG for ApL (2022-24 cohort) can only be used to subsidise students to take ApL courses for the 2022-24 cohort and cannot be mixed with the DLG for other cohorts of ApL courses. The funding must be used for the payment of ApL course fees to be charged by the course providers. It must not be used for Other Languages and Other Programmes (which are supported by other categories of the DLG), and other purposes such as capital purchases, overheads or maintenance, etc.

### Funding Arrangement

5. Schools will be allocated with an amount of DLG for ApL which is equal to the total course fee of ApL courses enrolled by eligible students. The DLG for ApL (2022-24 cohort) will be allocated to schools in **two equal instalments** during the two-year course duration. The first and second instalments of the DLG for ApL will be provisionally disbursed to schools in August 2022 and August 2023 respectively. For government secondary schools, the DLG for ApL will be provided to schools in the form of budget allocations. Adjustments to the DLG for ApL, if any, will be made by the EDB based on the actual number of students taking ApL courses (2022-24 cohort) (as at **30 September of the respective school years**) and the information submitted by schools.

---

<sup>7</sup> Students no longer meeting the requirements as stated in paragraph 3 above due to any reason (e.g. departed from schools) will not be eligible for the DLG for ApL. However, if such students have successfully completed their first year study of ApL courses, they may continue their second year study of ApL courses at their own expense with the consent of the respective course providers and the EDB.

<sup>8</sup> In case a student also takes the adapted ApL course(s), each adapted ApL course will be counted as an ApL course in the funding arrangement.

## Accounting Arrangements

6. Schools should pay course fees to the course providers in two equal instalments. Instalments of course fees would be calculated based on the number of students as at **30 September** of the respective school years. Besides, schools may apply for course fee reduction from the course providers should there be venues, facilities, equipment provided or school teachers contributing to the teaching of ApL courses, etc..

7. For aided secondary schools, caput schools, DSS secondary schools and special schools, a separate ledger account named “**DLG for ApL (2022-24 cohort)**” should be kept in the school ledger account under the **Government Fund** to properly record all income and expenditure chargeable to ApL courses. The surplus in the ledger account can be carried forward to the next school year until **31 August 2024**. Any unspent balance of the grant will be clawed back. Transfer of funds and/or its unspent balance out of this grant is not allowed. In case of deficit in the ledger account, schools can top up the grant by deploying other resources tabulated below by the end of the respective school years.

School Type	Resources to be Deployed by Schools
Aided Secondary Schools, Special Schools	<ul style="list-style-type: none"> <li>• Capacity Enhancement Grant (CEG)</li> <li>• Surplus in the General Domain of Operating Expenses Block Grant (OEBG) / Expanded OEBG</li> <li>• Substitute Teacher Grant / Teacher Relief Grant (TRG)</li> <li>• Senior Secondary Curriculum Support Grant (SSCSG)<sup>9</sup></li> <li>• Schools’ own funds</li> </ul>
Government Secondary Schools	<ul style="list-style-type: none"> <li>• Expanded Subject and Curriculum Block Grant</li> <li>• TRG</li> </ul>
Caput Schools	<ul style="list-style-type: none"> <li>• CEG</li> <li>• SSCSG</li> <li>• Fee Subsidy</li> <li>• Schools’ own funds</li> </ul>
DSS Secondary Schools	<ul style="list-style-type: none"> <li>• CEG</li> <li>• DSS Subsidy</li> <li>• Schools’ own funds</li> </ul>

8. If schools still have financial difficulties in offering the ApL courses after deploying other resources, schools may approach the EDB to explain their practical difficulties. The EDB will consider providing appropriate support taking into account the specific situation of individual schools.

9. For government secondary schools, the expenditure should be charged to the user code assigned for DLG for ApL (2022-24 cohort). The grant is financial year-based and the expenditure could not exceed the allocation in the respective financial year. Separate allocation for the unspent balance (if any) of the preceding financial year will be provided at the beginning of the next financial year, and any unspent balance of the grant will lapse after **31 August 2024**. Transfer of funds and/or its unspent balance out of this grant is not allowed. In case of deficit, schools can top up the grant by deploying the resources as set out in paragraph 7.

<sup>9</sup> Schools must convert the SSCSG into regular teaching posts by commencement of the 2022/23 school year. Any unspent balance of the grant can be deployed until 31 August of the school year for the conversion. Please refer to EDB Circular No. 5/2019 for details.

**Funding and Accounting Arrangements for  
Student Grant for Applied Learning Chinese (for non-Chinese speaking students)  
(2022-24 Cohort; 2024 HKDSE)**

**Student Grant for Applied Learning Chinese (for non-Chinese speaking students)**

1. The Student Grant for Applied Learning Chinese (for non-Chinese speaking students)(Student Grant) supports aided, government and caput schools, schools under the Direct Subsidy Scheme (DSS) and special schools operating senior secondary classes to offer Applied Learning Chinese (for non-Chinese speaking students)(ApL(C)) courses. It is a cash grant for aided secondary schools, caput schools, DSS secondary schools and special schools. For government secondary schools, it is in the form of budget allocation.

**Ambit**

2. Eligible schools offering ApL(C) courses are provided with the Student Grant to pay for the course fees. Full subsidies will be provided to schools to support each eligible non-Chinese speaking students in taking one ApL(C) course. Schools receiving the Student Grant are NOT allowed to charge students any course fees.

3. The Student Grant (2022-24 cohort) can only be used to subsidise students to take ApL(C) courses for the 2022-24 cohort. The funding must be used for the payment of ApL(C) course fees to be charged by the course providers. It must not be used for offering other ApL courses, capital purchases, overheads or maintenance, etc..

**Funding Arrangement**

4. Schools will be allocated with an amount of Student Grant which is equal to the total course fee of ApL(C) courses enrolled by eligible students. The Student Grant will be provisionally allocated to schools in **three equal instalments**. The first installment will be provisionally disbursed to schools in January 2022, the second and third instalments of the Student Grant will be provisionally disbursed to schools in August 2022 and August 2023 respectively. Adjustments to the Student Grant, if any, will be made according to actual number of students (as at **28 February 2022, 30 September 2022 and 30 September 2023**) and the information submitted by schools.

**Accounting Arrangements**

5. Schools should pay course fees to the course providers in three equal instalments. Instalments of course fees would be calculated based on actual number of students (as at **28 February 2022, 30 September 2022 and 30 September 2023**). Besides, schools may apply for course fee reduction from the course providers should there be venues, facilities, equipment provided or school teachers contributing to the teaching of ApL(C) courses, etc..

6. For aided secondary schools, caput schools, DSS secondary schools and special schools, a separate ledger account named “**Student Grant for ApL(C) (2022-24 cohort)**” should be kept in the school ledger account under the **Government Fund** to properly record all income and expenditure. The surplus in the ledger account can be carried forward to the next school year until **31 August 2024**. Any unspent balance of Student Grant will be clawed back. Transfer of funds and/or its unspent balance out of this grant is not allowed. In case of deficit in the ledger account, schools can top up the grant by deploying other resources tabulated below by the end of the respective school years.

School Type	Resources to be Deployed by Schools
Aided Secondary Schools, Special Schools	<ul style="list-style-type: none"> <li>• Capacity Enhancement Grant (CEG)</li> <li>• Surplus in the General Domain of Operating Expenses Block Grant (OEBG) / Expanded OEBG</li> <li>• Substitute Teacher Grant / Teacher Relief Grant (TRG)</li> <li>• Senior Secondary Curriculum Support Grant (SSCSG)<sup>10</sup></li> <li>• Schools' own funds</li> </ul>
Government Secondary Schools	<ul style="list-style-type: none"> <li>• Expanded Subject and Curriculum Block Grant</li> <li>• TRG</li> </ul>
Caput Schools	<ul style="list-style-type: none"> <li>• CEG</li> <li>• SSCSG</li> <li>• Fee Subsidy</li> <li>• Schools' own funds</li> </ul>
DSS Secondary Schools	<ul style="list-style-type: none"> <li>• CEG</li> <li>• DSS Subsidy</li> <li>• Schools' own funds</li> </ul>

7. If schools still have financial difficulties in offering the ApL(C) courses after deploying other resources, schools may approach the EDB to explain their practical difficulties. The EDB will consider providing appropriate support taking into account the specific situation of individual schools.

8. For government secondary schools, the expenditure should be charged to the user code assigned for Student Grant for ApL(C) (2022-24 cohort). The grant is financial year-based and the expenditure could not exceed the allocation in the respective financial year. Separate allocation for the unspent balance (if any) of the preceding financial year will be provided at the beginning of the next financial year, and any unspent balance of the grant will lapse after **31 August 2024**. Transfer of funds and/or its unspent balance out of this grant is not allowed. In case of deficit, schools can top up the grant by deploying the resources as set out in paragraph 6.

---

<sup>10</sup> Schools must convert the SSCSG into regular teaching posts by commencement of the 2022/23 school year. Any unspent balance of the grant can be deployed until 31 August of the school year for the conversion. Please refer to EDB Circular No. 5/2019 for details.

應用學習課程一覽表  
(2022-24 年度；2024 年香港中學文憑考試)

List of Applied Learning Courses  
(2022-24 Cohort; 2024 HKDSE)

學習範疇 Area of Studies	課程組別 Course Cluster	科目代碼 Subject Code	課程 <sup>註一</sup> Course <sup>NOTE 1</sup>	課程提供機構 <sup>註二</sup> Course Provider <sup>NOTE 2</sup>	教學語言 Medium of Instruction	可提早於 2021/22 學年 中四級開辦 Available for early commencement at Secondary 4 in the 2021/22 s.y.	課程費用 <sup>註三</sup> Course Fee <sup>NOTE 3</sup> (\$)	
創意學習 Creative Studies	設計學 Design Studies	676	時裝形象設計 Fashion Image Design	△	VTC	中文或英文 Chinese or English	✓	16,270
		668	室內設計 Interior Design	△	VTC	中文或英文 Chinese or English	✓	14,350
		717	數碼年代—珠寶設計 Jewellery Design in Digital Age	△	VTC	中文或英文 Chinese or English	不適用 Not Applicable	15,100
	媒體藝術 Media Arts	669	電腦遊戲及動畫設計 Computer Game and Animation Design	△	VTC	中文或英文 Chinese or English	✓	14,350
		707	數碼漫畫設計與製作 Digital Comic Design and Production	△	HKU (SPACE)	中文或英文 Chinese or English	✓	15,500
		710	流行音樂製作 Popular Music Production	△	HKCT	中文 Chinese	✓	22,000
	表演藝術 Performing Arts	599	舞出新機—舞蹈藝術 Taking a Chance on Dance	▲	HKAPA	中文 Chinese	不適用 Not Applicable	21,800
		677	由戲開始·劇藝縱橫 The Essentials of Theatre Arts	▲	HKAPA	中文 Chinese	不適用 Not Applicable	20,000
媒體及傳意 Media and Communication	電影、電視與廣播學 Films, TV and Broadcasting Studies	711	數碼媒體及電台製作 Digital Media and Radio Production	△	HKU (SPACE)	中文或英文 Chinese or English	✓	18,000
		702	電影及超媒體 Film and Transmedia	△	VTC	中文或英文 Chinese or English	✓	15,100
	媒體製作與公共關係 Media Production and Public Relations	718	數碼品牌傳播 Digital Brand Communication	# ▲	HKU (SPACE)	中文或英文 Chinese or English	不適用 Not Applicable	18,000
		719	多媒體故事 Multimedia Storytelling	# ▲ @	HKBU (SCE)	中文或英文 Chinese or English	不適用 Not Applicable	24,000
		708	公關及多媒體傳訊 PR and Multimedia Communication	# △	HKCT	中文或英文 Chinese or English	✓	13,800
商業、管理及法律 Business, Management and Law	會計及金融 Accounting and Finance	703	電子商務會計 Accounting for e-Business	▲	CityU (SCOPE)	中文或英文 Chinese or English	✓	17,300
	商業學 Business Studies	720	人工智能—商業應用 AI in Business	▲	CityU (SCOPE)	中文或英文 Chinese or English	不適用 Not Applicable	19,300
		693	商業數據應用 Data Application for Business	△	HKIT	中文或英文 Chinese or English	✓	10,400
		681	市場營銷及網上推廣 Marketing and Online Promotion	△	CityU (SCOPE)	中文 Chinese	✓	16,490
	法律學 Legal Studies	672	香港執法實務 Law Enforcement in Hong Kong	△	HKBU (SCE)	中文或英文 Chinese or English	✓	15,800



學習範疇 Area of Studies	課程組別 Course Cluster	科目代碼 Subject Code	課程 Course NOTE 1	課程提供機構 Course Provider NOTE 2	教學語言 Medium of Instruction	可提早於 2021/22 學年 中四級開辦 Available for early commencement at Secondary 4 in the 2021/22 s.y.	課程費用 Course Fee NOTE 3 (\$)
服務 Services	食品服務及管理 Food Services and Management	721	新派東南亞菜 Modern Southeast Asian Cuisine #▲	HKCT	中文 Chinese	不適用 Not Applicable	19,800
		688	甜品及咖啡店營運 Pâtisserie and Café Operations #▲	HKCT	中文或英文 Chinese or English	✓	18,700
		616	西式食品製作 Western Cuisine #△	VTC	中文或英文 Chinese or English	✓	16,050
	款待服務 Hospitality Services	709	機場客運大樓運作 Airport Passenger Terminal Operations △	HKCT	中文 Chinese	✓	20,200
		611	酒店服務營運 Hospitality Services in Practice #▲	CityU (SCOPE)	中文或英文 Chinese or English	✓	18,700
		615	酒店營運 Hotel Operations #△	VTC	中文或英文 Chinese or English	✓	15,800
	個人及社區服務 Personal and Community Services	704	幼兒發展 Child Care and Development #▲	CICE	中文或英文 Chinese or English	✓	16,880
		665	幼兒教育 Child Care and Education #△	VTC	中文或英文 Chinese or English	✓	15,100
		610	美容學基礎 Fundamental Cosmetology △	CICE	中文 Chinese	✓	14,400
應用科學 Applied Science	食物科學 Food Science	712	食品創新與科學 Food Innovation and Science △	HKU (SPACE)	中文或英文 Chinese or English	✓	18,000
	醫療科學及健康護理 Medical Science and Health Care	689	動物護理 Animal Care #▲	CityU (SCOPE)	英文 English	不適用 Not Applicable	25,800
		592	中醫藥學基礎 Foundation in Chinese Medicine #▲	HKU (SPACE)	中文 Chinese	✓	16,500
		618	健康護理實務 Health Care Practice #▲	CICE	中文或英文 Chinese or English	✓	16,270
		660	醫務化驗科學 Medical Laboratory Science △	HKU (SPACE)	中文或英文 Chinese or English	✓	18,000
		713	復康護理實務 Rehabilitation Care Practice △	CICE	中文或英文 Chinese or English	不適用 Not Applicable	17,650
	心理學 Psychology	662	應用心理學 Applied Psychology #▲	LIFE	中文或英文 Chinese or English	✓	17,500
		691	實用心理學 Practical Psychology #△	HKBU (SCE)	中文或英文 Chinese or English	✓	16,250
	運動 Sports	674	運動及體適能教練 Exercise and Fitness Coaching #△	HKCT	中文或英文 Chinese or English	✓	14,200
		627	運動科學及體適能 Exercise Science and Health Fitness #△	HKBU (SCE)	中文或英文 Chinese or English	✓	19,150
工程及生產 Engineering and Production	土木、電機及機械工程 Civil, Electrical and Mechanical Engineering	683	電機及能源工程 Electrical and Energy Engineering △	VTC	中文或英文 Chinese or English	✓	15,410
	資訊工程 Information Engineering	722	人工智能與機械人 AI and Robotics #▲	HKU (SPACE)	中文或英文 Chinese or English	不適用 Not Applicable	18,000
		684	電腦鑑證科技 Computer Forensic Technology △	HKU (SPACE)	中文或英文 Chinese or English	不適用 Not Applicable	15,200
		714	電競科技 eSports Technology △	HKU (SPACE)	中文或英文 Chinese or English	✓	18,000
		706	資訊科技精要 Tech Basics #△@	HKBU (SCE)	中文或英文 Chinese or English	✓	24,000
	服務工程 Services Engineering	640	航空學 Aviation Studies △	HKU (SPACE)	中文或英文 Chinese or English	✓	16,000
		698	鐵路學 Railway Studies △	HKCT	中文或英文 Chinese or English	✓	19,100

學習範疇 Area of Studies	課程組別 Course Cluster	科目代碼 Subject Code	課程 <sup>註一</sup> Course <sup>NOTE 1</sup>	課程提供機構 <sup>註二</sup> Course Provider <sup>NOTE 2</sup>	教學語言 Medium of Instruction	可提早於 2021/22 學年 中四級開辦 Available for early commencement at Secondary 4 in the 2021/22 s.y.	課程費用 <sup>註三</sup> Course Fee <sup>NOTE 3</sup> (\$)
跨學習範疇 Cross Areas of Studies	應用學習 (職業英語) Applied Learning (Vocational English)	715	英文傳意 English Communication # △	VTC	英文 English	✓	16,900
		723	商用服務英語 English for Business Services # ▲	HKCT	英文 English	不適用 Not Applicable	19,800
		716	服務業專業英語 English for Service Professionals # △	HKU (SPACE)	英文 English	✓	19,800
	應用學習中文 (非華語學生 適用) Applied Learning Chinese (for non-Chinese speaking students)	695	商業服務中文 Chinese in Business Service # △	PolyU (SPEED)	中文 Chinese	不適用 Not Applicable	43,500
		700	實用情境中文 Chinese in Practical Context # △	HKBU (SCE)	中文 Chinese	不適用 Not Applicable	44,550
		699	實務中文 Practical Chinese # △	HKCT	中文 Chinese	不適用 Not Applicable	40,200
		725	韓國語文及文化 Korean Language and Culture # ▲	LIFE	中文 Chinese	不適用 Not Applicable	17,500
		726	實用翻譯(漢英) Practical Translation (CHI-ENG) # ▲	LIFE	中文及英文 Chinese and English	不適用 Not Applicable	17,500

### 註一 NOTE 1

# 學生在同一個課程組別內只可修讀一科「#」標示的課程。For courses marked with “#”, only **one** course in the course cluster could be taken by a student.

△ 「△」標示的課程已載錄於資歷名冊，屬於資歷架構第三級的證書課程。學生成功完成「△」標示的應用學習課程，除了會得到香港中學文憑資歷之外，亦會獲課程提供機構頒發資歷架構第三級證書。詳情可瀏覽資歷名冊網頁 ([www.hkqr.gov.hk](http://www.hkqr.gov.hk))。The courses marked with “△” are registered in the Qualifications Register as certificate programmes at Qualifications Framework (QF) Level 3. Students will also obtain a QF Level 3 certificate issued by Course Providers in addition to the Hong Kong Diploma of Secondary Education qualification upon successful completion of these Applied Learning (ApL) courses. Details are available at the Qualifications Register website ([www.hkqr.gov.hk](http://www.hkqr.gov.hk)).



▲ 教育局鼓勵課程提供機構按情況安排「▲」標示的應用學習課程與資歷架構掛鈎。最新消息請留意應用學習網頁。The Education Bureau (EDB) encourages course providers to seek QF accreditation, where appropriate, for courses marked with “▲”. Please refer to the ApL website for updated information.

@ 下列課程屬於「鼓掌—創新教育歷程 (CLAP-TECH)」計劃的一部分，計劃旨在發展一條有業界參與的學習路徑。有關詳情，請聯絡課程提供機構—香港浸會大學持續教育學院。The courses below are part of the CLAP-TECH project that aims to develop a learning pathway with the engagement of industries. For details, please contact the course provider, HKBU(SCE).

學習範疇 Area of Studies	課程組別 Course Cluster	課程 <sup>註一</sup> Course <sup>NOTE 1</sup>	課程提供機構 <sup>註二</sup> Course Provider <sup>NOTE 2</sup>	教學語言 Medium of Instruction	課程費用 <sup>註三</sup> Course Fee <sup>NOTE 3</sup> (\$)
媒體及傳意 Media and Communication	媒體製作與公共關係 Media Production and Public Relations	多媒體故事 Multimedia Storytelling # ▲	HKBU (SCE)	中文或英文 Chinese or English	24,000
工程及生產 Engineering and Production	資訊工程 Information Engineering	資訊科技精要 Tech Basics △	HKBU (SCE)	中文或英文 Chinese or English	24,000

### 註二 NOTE 2

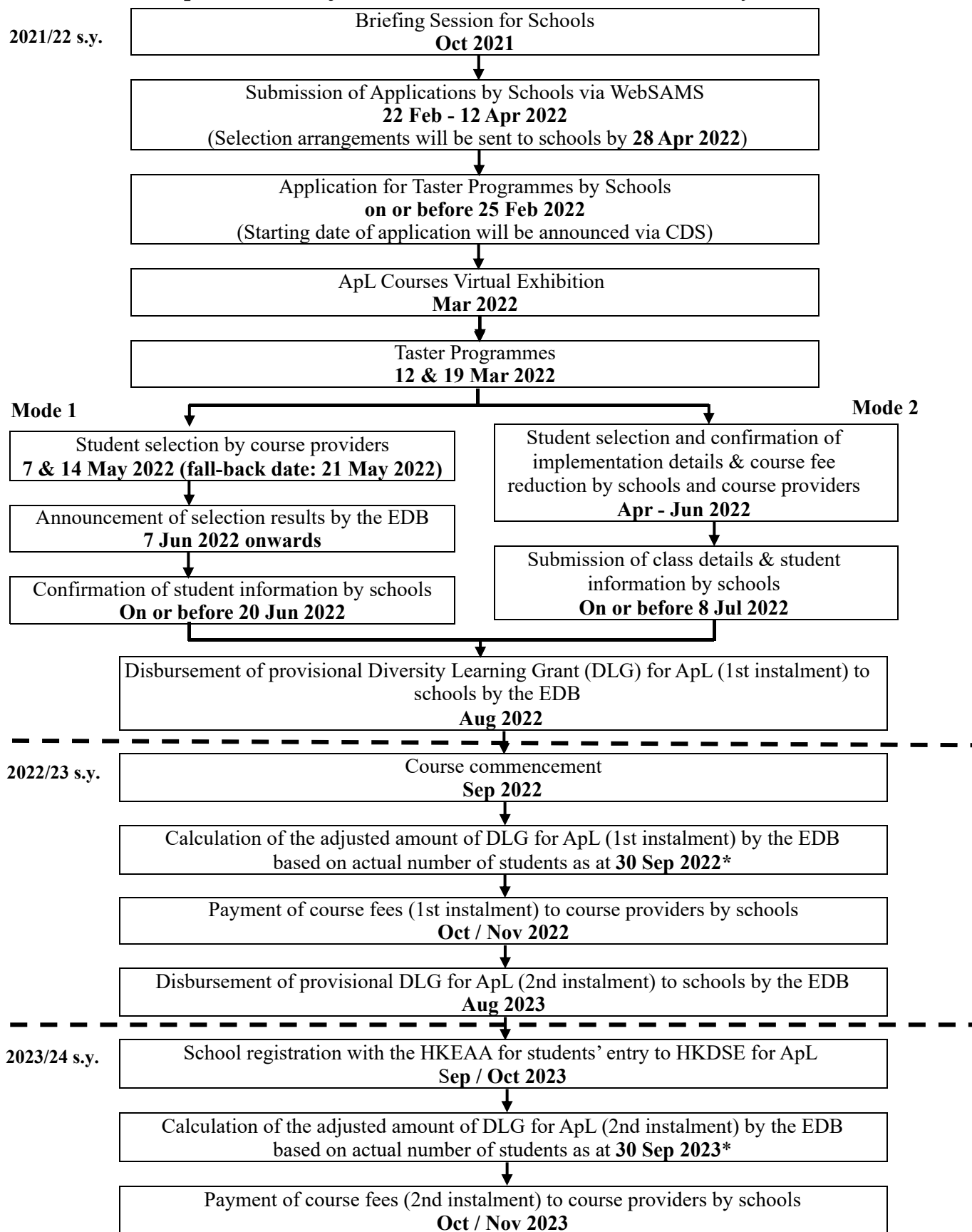
課程提供機構 Course Provider	
CICE	明愛社區書院 Caritas Institute of Community Education
CityU(SCOPE)	香港城市大學專業進修學院 School of Continuing and Professional Education, City University of Hong Kong
HKAPA	香港演藝學院 The Hong Kong Academy for Performing Arts
HKBU(SCE)	香港浸會大學持續教育學院 School of Continuing Education, Hong Kong Baptist University
HKCT	香港專業進修學校 Hong Kong College of Technology
HKIT	香港科技專上書院 Hong Kong Institute of Technology
HKU(SPACE)	香港大學專業進修學院 School of Professional and Continuing Education, The University of Hong Kong
LIFE	嶺南大學持續進修學院 Lingnan Institute of Further Education
PolyU(SPEED)	香港理工大學專業進修學院 The School of Professional Education and Executive Development, The Hong Kong Polytechnic University
VTC	職業訓練局 Vocational Training Council

### 註三 NOTE 3

在資助中學、官立中學、按位津貼學校、直接資助計劃中學及設有高中班級的特殊學校修讀由課程發展議會所編訂並由教育局公布之高中課程的學生，將獲教育局全數資助課程費用。Students in aided, government and caput schools, schools under the Direct Subsidy Scheme and special schools with senior secondary classes studying the senior secondary curriculum prepared by the Curriculum Development Council and published for use in schools by the EDB will be fully subsidised by the EDB to take ApL courses.

## Applied Learning Courses (2022-24 Cohort; 2024 HKDSE)

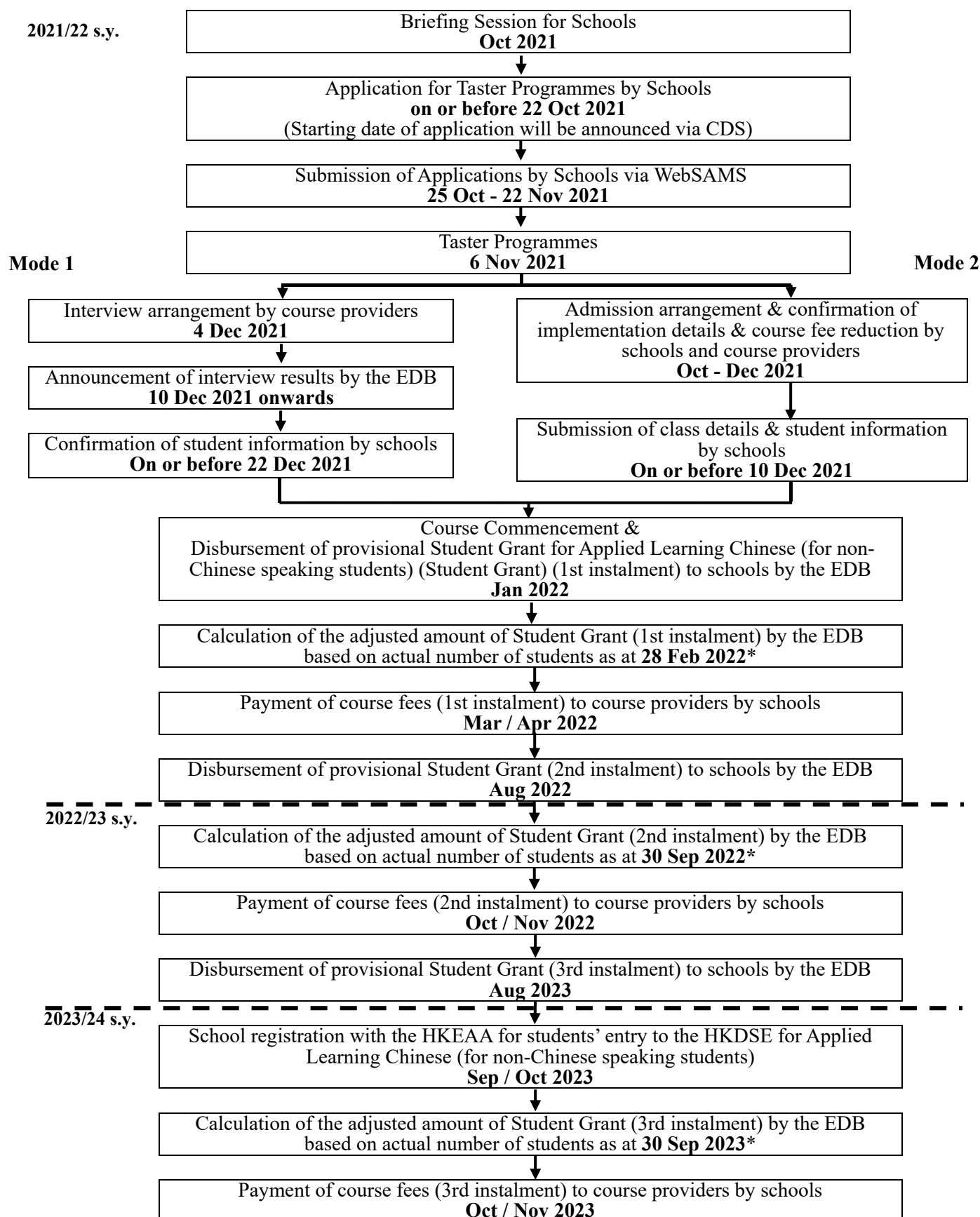
### *Important Dates for Course Commencement at Secondary 5*



\* Adjustment of the 1st and 2nd instalments of the DLG for ApL will be made by the EDB before Jan 2023 and Jan 2024 respectively.

**Applied Learning Chinese (for non-Chinese speaking students)  
(2022-24 Cohort; 2024 HKDSE)**

**Important Dates**



\* Adjustment of the 1st, 2nd and 3rd instalments of the Student Grant will be made by the EDB before May 2022, Jan 2023 and Jan 2024 respectively.

**Course Exhibition Events and Taster Programmes for  
Applied Learning Courses  
(2022-24 Cohort; 2024 HKDSE)**

*(Details will be announced through the CDS in the WebSAMS)*

**(A) Course Exhibition Events**

Events	Date	Remarks
<b>Applied Learning Courses Virtual Exhibition</b>	March 2022	Online resources on ApL Courses will be provided by CPs to deepen students' understanding of ApL courses.

**(B) ApL Taster Programmes (for S4 Students)**

Courses	Date	Remarks
<b>Applied Learning Chinese (for non-Chinese speaking students) (ApL(C))</b>	6 November 2021 (Saturday)	Course introduction, demonstration and workshops will be provided by the course providers to enable students to experience the learning of ApL courses and ApL(C) courses.
<b>Applied Learning (ApL)</b>	12 and 19 March 2022 (Saturdays)	

**Note:**

1. **Junior Taster Programmes of ApL** will be organised in the 2021/22 school year targeting S2 and S3 students to provide them with early exposure to ApL courses and related industries/professions.
2. Course prospectus and leaflets will be distributed to schools in due course.