



Rowing Rules and Basics



Fun Fact 1



Hi~
Can you tell me more about the origin of rowing?



The origin of the sport of rowing comes from England, where the world-renowned Oxford versus Cambridge University Boat Race was first held in 1829 on the River Thames.

Then the Olympics Games in 1900 and the 1982 Asian Games.

Any special requirement of the competition area?



The race should compete on still water which is 2000 metres long with 12.5-13.5m for the width of each lane and around 100 metres as the buffer zone.

Way to win

Athletes sit in the boat facing backwards and use the oars to propel the boat forward.

The winner is declared by the time to finish the races.

Reference:

The official website of the 19th Asian Games Hangzhou
The official website of Hong Kong China Rowing Association



Fun Fact 3

I see.
Any special features of the rowing boat?



The width of boats varies from approximately 30cm for a single scull and up to 65cm for an eight. A small fin is fitted beneath the boat for directional stability. A rudder is attached to the fin or the stern for steering. Moreover, seats are fitted with wheels which roll on runners or tracks.

You know ~
There is a repechage in the Olympics Games but no repechage in Asian Games.



Fun Fact 2

Let's learn about the rowing events in this Asian Games!

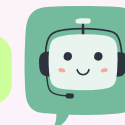


Men's	Women's
Single Scull (M1X)	Single Scull (W1X)
Double Sculls (M2X)	Double Sculls (W2X)
Quad Sculls (M4X)	Quad Sculls (W4X)
Lightweight Double Sculls (LM2X)	Lightweight Double Sculls (LW2X)
Coxless Pairs (M2-)	Coxless Pairs (W2-)
Coxless Four (M4-)	Coxless Four (W4-)
Coxed Eight (M8+)	Coxed Eight (W8+)

In rowing, the primary meaning of the word "scull" is moving the boat with two oars per rower and Sculling is usually done in quads, doubles or singles.

On the other side, there is sweep or sweep-oar rowing which means each rower has one oar, held with both hands. And this can be done in pairs, fours and eights.

How about the (+) and (-)?



(+) & (-) means whether there is a coxswain in the boat. For example: "Coxed four (4+)" means there are four rowers and a coxswain to steer the boat.

By the way, for the lightweight double scull, there are no rowers over 72.5kg for men and 59kg for women.