

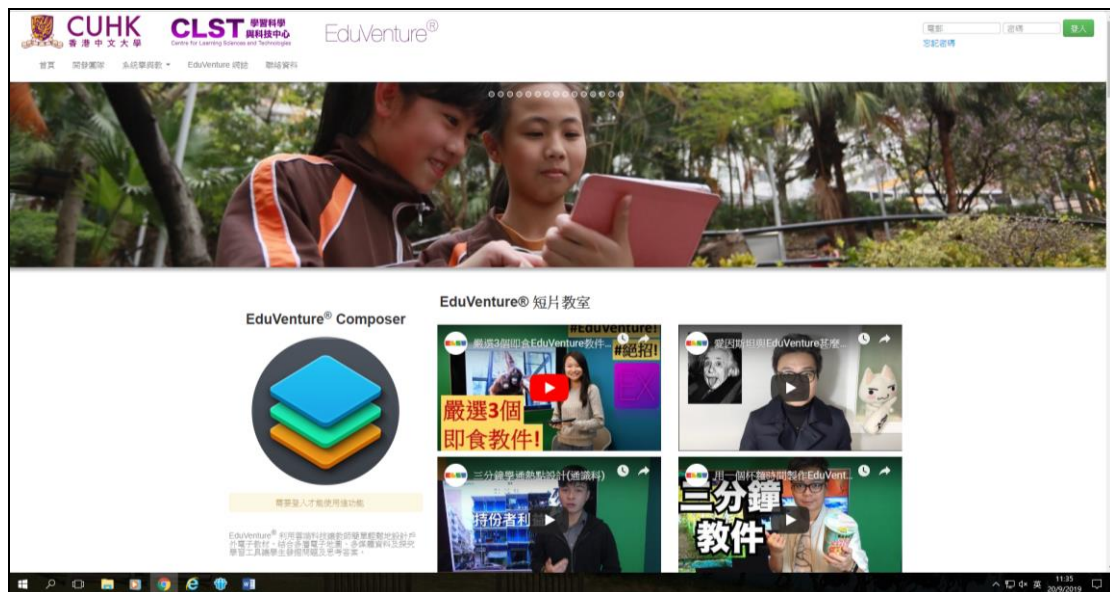
MOBILE LEARNING AND THE DEVELOPMENT OF FIELDWORK SKILLS:

(1) User Manual on developing
fieldwork resources with
EduVenture[®]

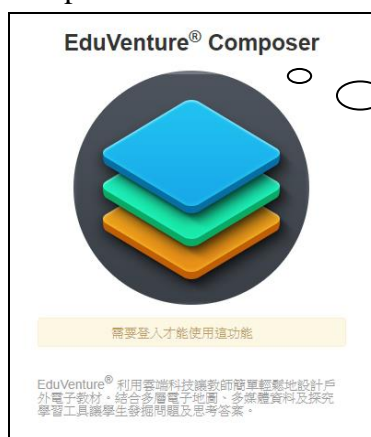


The Chinese University of Hong Kong
Centre for Learning Sciences and Technologies

Step 1 : Log in the EduVenture® system at <http://ev-cuhk.net/>.



Step 2 : Choose EduVenture® Composer on the website



For editing the fieldwork resources



For data collection during field trips

EduVenture® Retriever

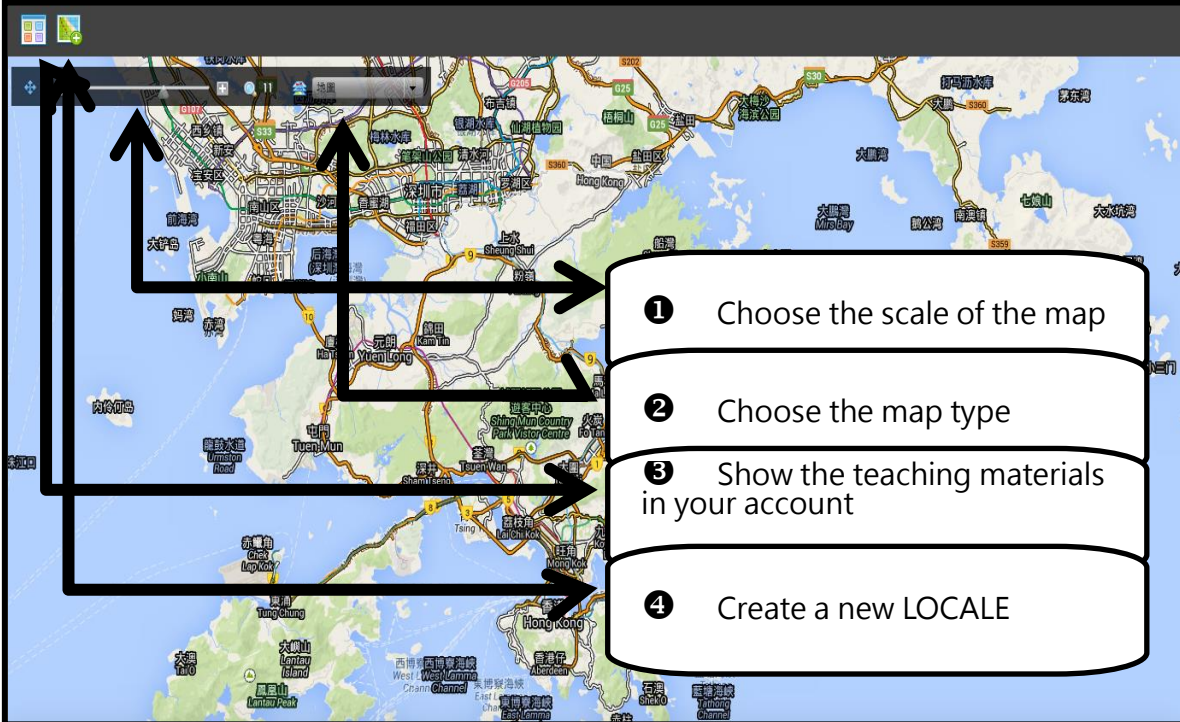


需要登入才能使用這功能

EduVenture® Retriever 實時呈現學生答案及學習成果，同時具有批改及比對功能，讓教師能在課堂上討論學生的戶外探究學習經驗。

For retrieving the collected fieldwork data and evaluating the learning results

Step 3 : Familiarise with the interface of EduVenture® Composer



- 1 Choose the scale of the map
- 2 Choose the map type
- 3 Show the teaching materials in your account
- 4 Create a new LOCALE

Step 4 : Create a new LOCALE

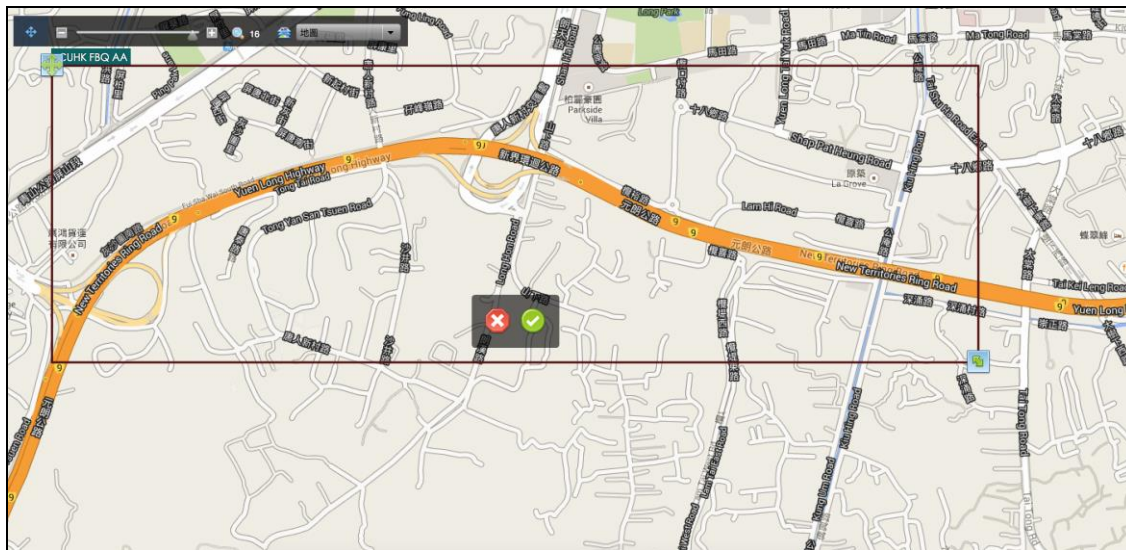
The screenshot shows a form titled "創建新考察" (Create New Fieldwork). The form is divided into several sections:

- 考察名稱 (Fieldwork Name):** A text input field with a red box labeled "1" around it.
- 考察描述 (Fieldwork Description):** A larger text input field with a red box labeled "2" around it.
- 考察用語言 (Fieldwork Language):** A dropdown menu currently set to "繁體中文" (Traditional Chinese).
- 是否共享 (Public Share):** A dropdown menu currently set to "限本校使用" (School Use Only).
- 代表顏色 (Representative Color):** A color selection area with a red box labeled "3" around it.
- 考察封面圖片 (必須上傳) (Fieldwork Cover Image (Must Upload)):** A section with a red box labeled "5" around it. It contains a "請選加入圖片方式" (Please select image addition method) area with two icons: a landscape photo and a gallery icon. Below it, it says "圖片: 未有檔案" (Image: No files).
- 學習領域 (KLA) (Learning Area (KLA)):** A dropdown menu with "請選擇" (Please select) and a red box labeled "4" around it.
- 學科 (Subject):** A dropdown menu with a red box labeled "7" around it.
- 目前為發佈模式, 其他人能看見本考察地圖 (Currently in publish mode, others can see this fieldwork map):** A lightbulb icon and a button labeled "轉為不發佈" (Switch to not publish) with a red box labeled "6" around it.

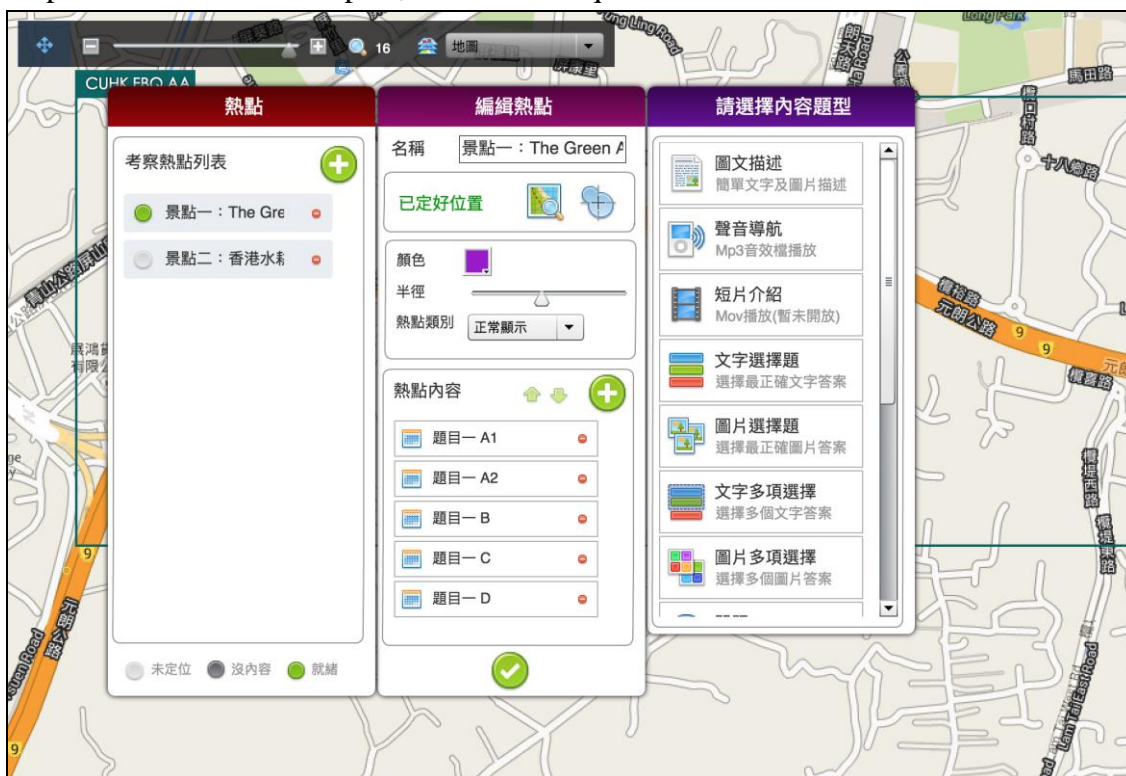
At the bottom of the form, there are two buttons: a red "X" button on the left and a green checkmark button on the right.

- 1 Enter the name of the fieldwork
- 2 Enter the description of the fieldwork
- 3 Choose the language/public share/color
- 4 Choose the area of the fieldwork
- 5 Upload a cover image
- 6 Choose to publish your work
- 7 Choose the Key Learning Area

Step 5 : Set the area of the fieldwork



Step 6 : Add and edit hotspots, and then add questions



Step 7 : Add hotspots



Step 8 : Edit hotspots



Step 9 : Choose the question type, and then type in your fieldwork questions

