

Geography: AR Sandbox and the development of map skills
Junior Secondary Geography Module (I): Food Problem - Can We Feed Ourselves?
<Graded Worksheets (Level 2): Basic map reading skills >

[Ms. Wong Akki, Geography panel head, Queen Elizabeth School Old Students' Association (QESOSA)
Tong Kwok Wah Secondary School & Curriculum Development Institute, the Education Bureau]

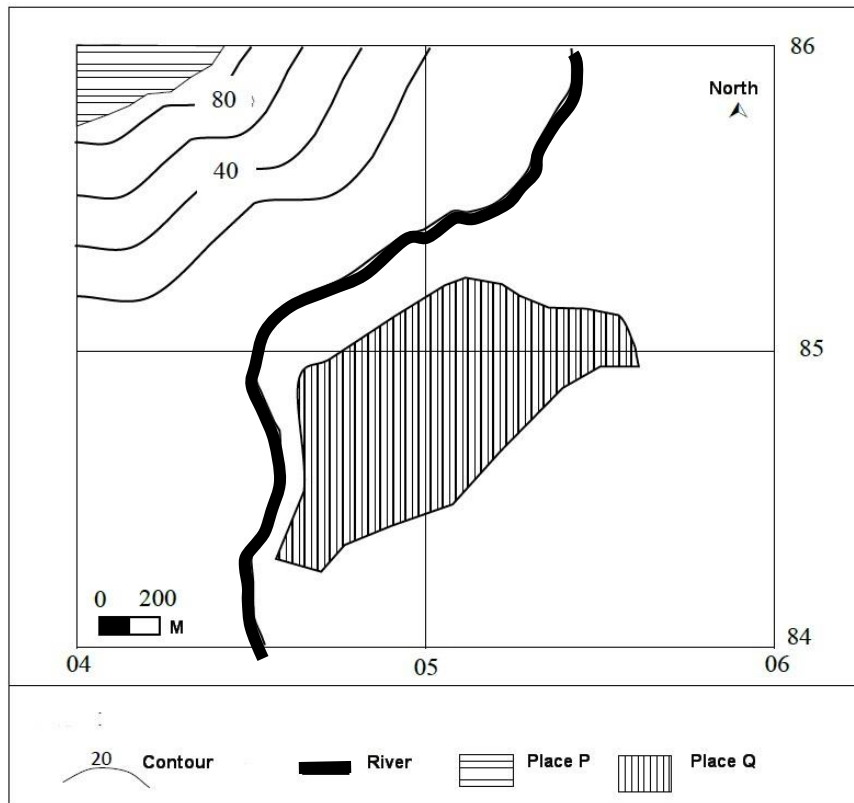


The following Fig. 1a and Fig. 1b are both sketch maps showing part of the environment and information of Area X. Refer to Fig. 1a and Fig. 1b to complete Exercise 1 and 2.

Exercise 1

Refer to Fig. 1a and complete Questions 1 to 5.

Fig. 1a



1. Place P is located in grid square _____.

- A. 0485*
- B. 0486
- C. 0585
- D. 0586

2. The vertical interval (V.I.) of the contour shown in the figure is _____.

- A. 10m
- B. 20m*
- C. 40m
- D. 60m

3. Which of the following is the method used in Fig. 1a to represent scale?

- A. linear scale *
- B. statement scale
- C. representative fraction (R.F.)

4. Which of the following is the map scale used in Fig. 1a?

- A. 1:100
- B. 1: 200
- C. 1: 10 000
- D. 1: 20 000 *

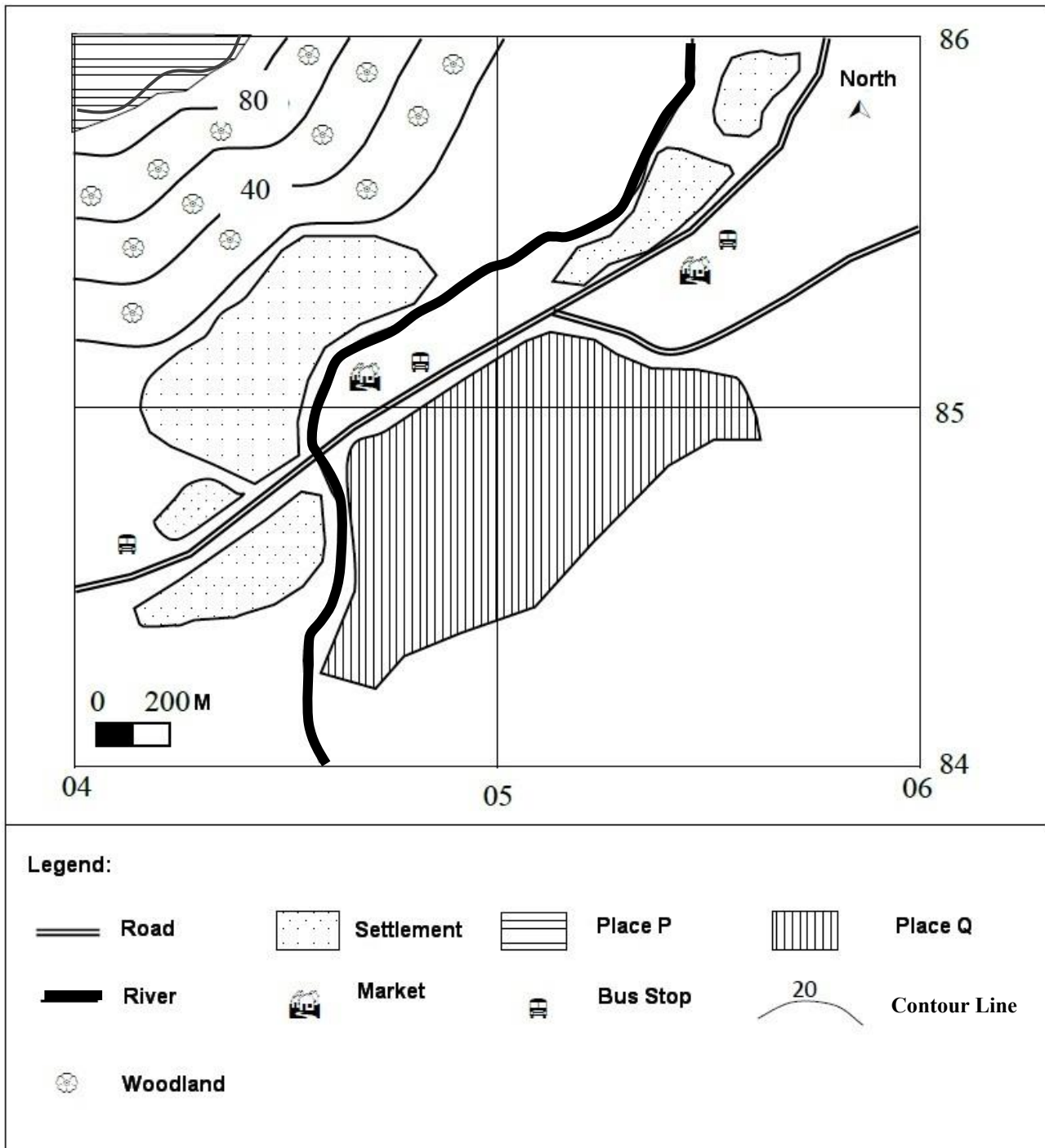
5. The actual length of the river shown in Fig. 1a is _____.

- A. 1 800m
- B. 2 100m
- C. 2 500m*
- D. 2 800m

Exercise 2

Refer to Fig. 1b and complete Questions 1 to 6.

Fig. 1b



1. Which of the following cannot be found in grid square 0484?

- A. Market*
- B. Settlement
- C. Bus Stop
- D. River

2. Which of the following land use cannot be found in grid square 0585?
- A. Transportation land use
 - B. Residential land use
 - C. Commercial land use
 - D. Industrial land use*
3. Which of the following is the compass point from the Bus Stop in grid square 0484 to the Market in grid square 0585?
- A. Northeast *
 - B. North 45° East
 - C. Southwest
 - D. South 45° West
4. What is the approximate length of the Road from grid reference 040845 to grid reference 058860?
- A. 2 000m
 - B. 2 300m
 - C. 2 500m*
 - D. 2 700m
5. Refer to Fig. 1b.
- a. Identify the main land use within Area X.

Item	Land Use
Road	Transportation land use
Market	Commercial land use
Bus stop	Transportation land use

- b. It is proposed that Place Q should be developed for farming purposes. Refer to Fig. 1b, explain why Place Q is more suitable than Place P for developing farming activities.

Factors	Explanations
Water Supply	Place Q is close to a river which makes it convenient for irrigation
Relief	Place Q has a gentler relief which facilitates farming and the use of agricultural machines
Transport	Place Q is closer to roads which makes it convenient for transporting human input into farms and crops/outputs out to the market for sale.
	Closer to bus stops which makes it convenient for labour to commute to and from farms.
Labour	Place Q is closer to settlements which makes it easier to

	employ labour for agricultural activities
Market	Place Q is closer to the market which makes it easier to obtain human input of the agricultural system and sell agricultural products/outputs.