

**Geography: AR Sandbox and the development of map skills**  
**Junior Secondary Geography Module (I): Food Problem - Can We Feed Ourselves?**  
**<Graded Worksheets (Level 2): Basic map reading skills >**

[Ms. Wong Akki, Geography panel head, Queen Elizabeth School Old Students' Association (QESOSA)  
Tong Kwok Wah Secondary School & Curriculum Development Institute, the Education Bureau]

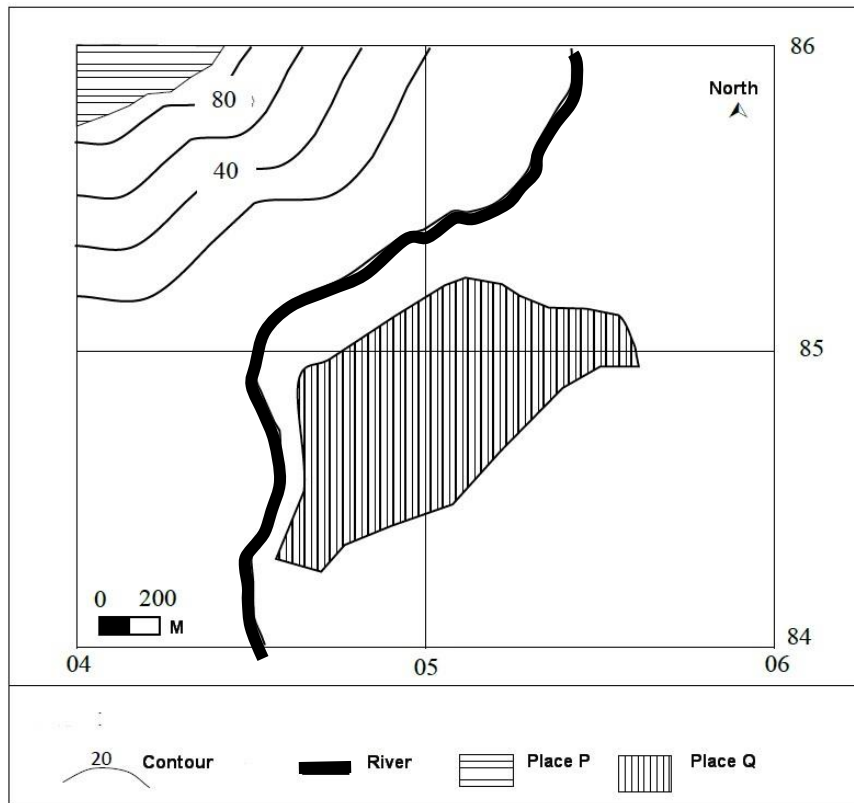


The following Fig. 1a and Fig. 1b are both sketch maps showing part of the environment and information of Area X. Refer to Fig. 1a and Fig. 1b to complete Exercise 1 and 2.

**Exercise 1**

Refer to Fig. 1a and complete Questions 1 to 5.

Fig. 1a



1. Place P is located in grid square \_\_\_\_\_.

- A. 0485
- B. 0486
- C. 0585
- D. 0586

2. The vertical interval (V.I.) of the contour shown in the figure is \_\_\_\_\_.

- A. 10m
- B. 20m
- C. 40m
- D. 60m

3. Which of the following is the method used in Fig. 1a to represent scale?

- A. linear scale
- B. statement scale
- C. representative fraction (R.F.)

4. Which of the following is the map scale used in Fig. 1a?

- A. 1:100
- B. 1: 200
- C. 1: 10 000
- D. 1: 20 000

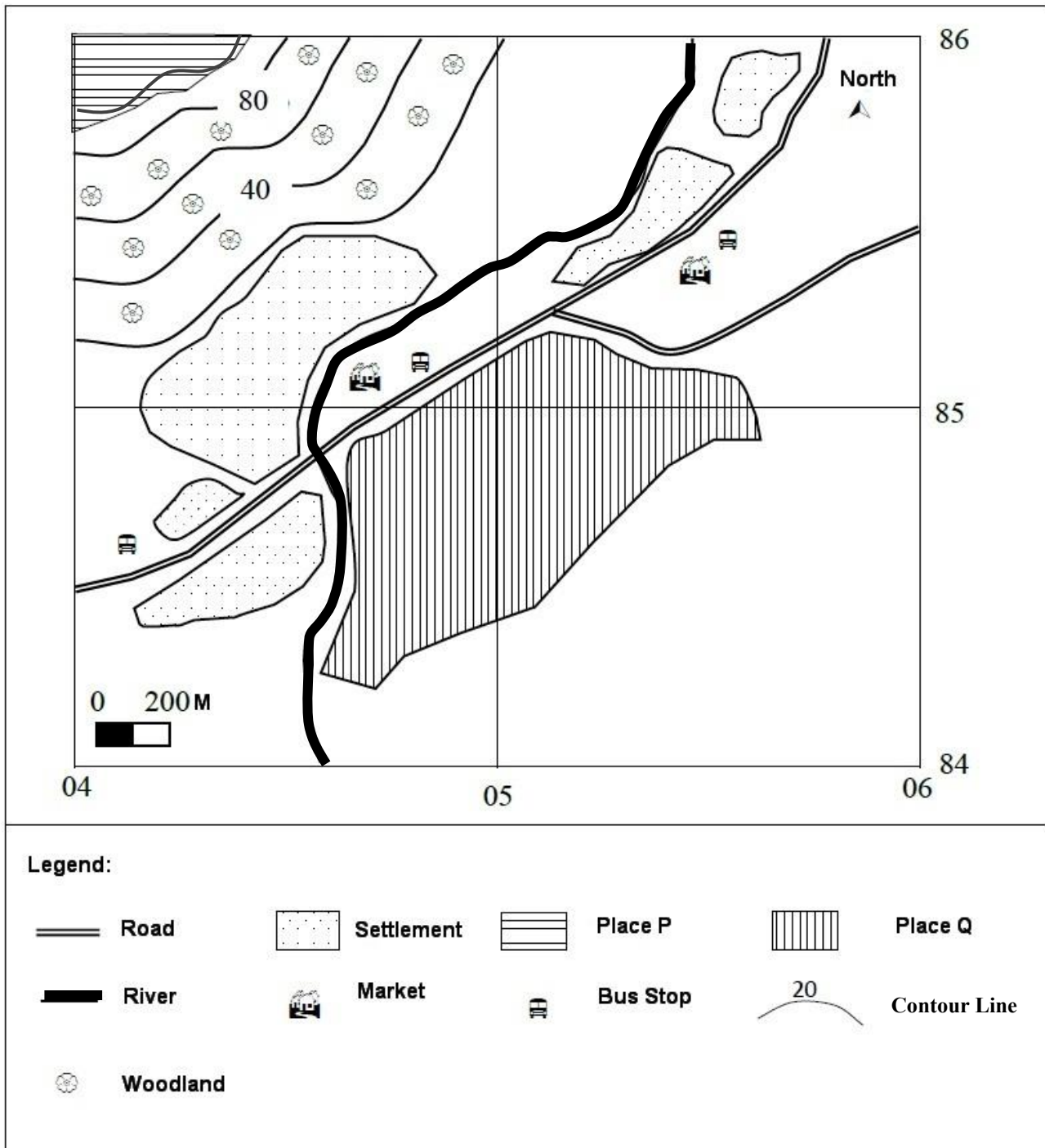
5. The actual length of the river shown in Fig. 1a is \_\_\_\_\_.

- A. 1 800m
- B. 2 100m
- C. 2 500m
- D. 2 800m

## Exercise 2

Refer to Fig. 1b and complete Questions 1 to 6.

Fig. 1b



1. Which of the following cannot be found in grid square 0484?

- A. Market
- B. Settlement
- C. Bus Stop
- D. River

2. Which of the following land use cannot be found in grid square 0585?
- A. Transportation land use
  - B. Residential land use
  - C. Commercial land use
  - D. Industrial land use
3. Which of the following is the compass point from the Bus Stop in grid square 0484 to the Market in grid square 0585?
- A. Northeast
  - B. North 45° East
  - C. Southwest
  - D. South 45° West
4. What is the approximate length of the Road from grid reference 040845 to grid reference 058860?
- A. 2 000m
  - B. 2 300m
  - C. 2 500m
  - D. 2 700m
5. Refer to Fig. 1b.
- a. Identify the main land use within Area X.

| Item     | Land Use |
|----------|----------|
| Road     |          |
| Market   |          |
| Bus stop |          |

- b. It is proposed that Place Q should be developed for farming purposes. Refer to Fig. 1b, explain why Place Q is more suitable than Place P for developing farming activities.

| Factors | Explanations |
|---------|--------------|
|         |              |
|         |              |
|         |              |

|  |  |
|--|--|
|  |  |
|  |  |