



About Us

The University of Hong Kong Museums Group is a new initiative that offers Hong Kong schools (at the primary and secondary levels) guided tours of four museums present on HKU campus (see **The Group** on the next page), with specially designed educational materials and activities adapted to each visit objective, age group and school's preference (see **Visit Options**). All the relevant sections of the Hong Kong public school curriculum which will be covered during your school's visit are detailed on the third page.

HKU Campus

The University of Hong Kong is renowned for its academic excellence and ranks among the top universities in Asia and globally. In addition to the visit of four unique museums, we also offer a tour of the beautiful HKU campus. In it, we highlight its historic and architectural treasures, some dating back over 110 years, as well as the challenges and successes of some of its most renowned and influential academics.



School Visits



Transport (bus/MTR) to HKU must be organised by each school



After arrival on campus, classes are split into suitably sized groups (max 25 visitors per museum, max 125 students per day in total)



Printed workbooks, created by world experts in education, art and science, are provided to students, to be completed during each museum visit



Groups visit each museum and HKU campus in a set order (see sample timetable below). Expert ambassadors will guide tours and assist with any workbook queries, as well as guide students to the next visit stop



Lunch/midday break (applicable to full-day, 4-museum visit package only). Food to be packed by the students/school or purchased on-campus



Class teachers are provided with workbook answers for ease of assessment, to be marked after the visit



A personalised certificate of completion, signed by each of the museum heads, is provided to each student at the end of the visit



Optional additional post-visit questions and team activities are provided to consolidate learning in the classroom

Sample full-day visit schedule (can be tailored):

Time	Group 1	Group 2	Group 3	Group 4	Group 5
09:00-09:45	Stephen Hui Geological Museum	HKU Campus Tour	University Museum and Art Gallery	Jao Tsung-I Petite Ecole	Hong Kong Biodiversity Museum
10:00-10:45	Hong Kong Biodiversity Museum	Stephen Hui Geological Museum	HKU Campus Tour	University Museum and Art Gallery	Jao Tsung-I Petite Ecole
11:00-11:45	Jao Tsung-I Petite Ecole	Hong Kong Biodiversity Museum	Stephen Hui Geological Museum	HKU Campus Tour	University Museum and Art Gallery
12:00-13:00	Lunch				
13:15-14:00	University Museum and Art Gallery	Jao Tsung-I Petite Ecole	Hong Kong Biodiversity Museum	Stephen Hui Geological Museum	HKU Campus Tour
14:15-15:00	HKU Campus Tour	University Museum and Art Gallery	Jao Tsung-I Petite Ecole	Hong Kong Biodiversity Museum	Stephen Hui Geological Museum
15:00- 15:15	Bus / MTR departure				

Visit Options

✖ **Age:** **primary** or **secondary** school.

We offer a primary school (P3-6) and a secondary school (S1-3) version of each visit package. These packages were vetted by world experts in each of the disciplines covered during the visits.

✖ **Language:** **English** or **Cantonese/traditional Chinese**.

Tours and booklets are readily available in these two languages.

✖ **Topics:** **sciences, arts, or both**.

• **2-museums stream:** you can choose to only visit the two science museums (HKBM and SHGM - the [Science Discovery Programme](#)) or only the two art museums (UMAG and JTIPE - the [Art Exploration Programme](#)). This plan is suitable for subject teachers and classes studying specific topics. This optionally also includes a tour of HKU campus. Two-museum visits can be arranged in the morning or afternoon.

Cost: HKD\$200 / student (**EARLYBIRD***: \$150 / student)

• **4-museums stream:** visit all four museums ([Art & Science Journey](#)), with the throughline of “*the natural world through a scientific versus artistic lens*”. This stream focuses predominantly on the view of the natural world in China, and includes a tour of HKU campus, describing how the university has promoted the study of the natural world in its many forms. Four-museum visits take up the whole day, starting at **9:00** and ending at **15:00** unless otherwise requested.

Cost: HKD\$300 / student (**EARLYBIRD***: \$200 / student)

✖ Other package combinations / specific focuses are available upon request: we are open to tailor-make visits and teaching materials according to your school or class's specific needs. This option will incur an additional cost.

EARLYBIRD* = book and pay before the 10th October

Book Your Visit

To book a visit with us, please fill in the application form at this link:

<https://forms.gle/QRgRA3tZ6924tumn6>

If you have any questions, you can email

hkumuseumsgroup@gmail.com





The University Museum and Art Gallery



More info: umag.hku.hk



The **University Museum and Art Gallery** is the oldest continuously operated museum in Hong Kong, and a leader in art education. It showcases a wide range of Chinese and international art of historic and contemporary significance, including ceramics, bronzes, jade, wood and stone carvings, as well as priceless paintings. Students will learn about different creative interpretations of the natural world through the lens of art, and gain a deeper appreciation of Hong Kong cultural values.



The Jao Tsung-I Petite Ecole



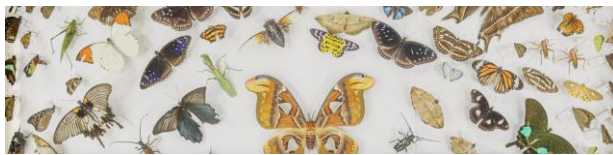
More info: jaotipe.hku.hk



the **Jao Tsung-I Petite Ecole** is home to one of Asia's most significant Chinese studies collections, with over 40,000 volumes from Professor Jao's personal library including rare Ming and Qing Dynasty books, calligraphy and paintings. Students will explore the exhibition and library, as well as learn the history of the heritage building in which the JTIPE is found, gaining an overview of the richness of the field of Sinology and its deep connections to nature and the arts.



The Hong Kong Biodiversity Museum



More info: hkbiodiversitymuseum.org



The **Hong Kong Biodiversity Museum** hosts the largest plant and animal specimen collection in the region, with over 57,000 specimens. Students will explore our most updated understanding of the tree of life, evolution, the relationships between species and their environment, and focus on the ecological significance of nature to society and the importance of conservation. A particular emphasis is placed on local species, learning to recognise and appreciate their roles, including through interactive microscope demonstrations.



The Stephen Hui Geological Museum



More info: earthsciences.hku.hk/shmuseum



The **Stephen Hui Geological Museum** offers an incredible opportunity to witness the birth of our planet and understand the geological processes that resulted in the formation and ongoing remodelling of Asia and beyond, through a stunning collection of over 1,500 rock and mineral samples, many originating from China. Students will also learn about the origin and evolution of life through a collection of more than 300 plant and animal fossils.





What we will cover from...



The Primary Curriculum (P3-6)



Arts



(CORE) Arts Education KLA Visual Arts Curriculum

- Developing creativity and imagination, cultivating critical responses
- Developing skills and processes through art-making
- Expressing the psychological effect of art in a simple yet clear way
- Understanding arts in context: realising art relates to its natural, historical and cultural environment and directly to people's life stories

(EXTENDED) Integrating Arts and Sciences: "The Arts Education KLA can contribute to the promotion of STEM education through incorporating elements of STEM into arts learning activities"

(CORE) Personal, Social and Humanities Education KLA General Studies Curriculum

Strand 4: Community and Citizenship

- Hong Kong history and cultural heritage

Strand 5: National Identity and Chinese Culture

- Chinese history and cultural heritage



General Studies

(CORE) Personal, Social and Humanities Education, Science Education and Technology Education KLAs General Studies Curriculum



Strand 2: People and Environment

- Features and growth processes of living things, their similarities and differences, their simple classification
- Different environments and their interdependence with living things
- Respecting and caring for the welfare and diversity of plants and animals, concern for endangered species
- How human activities affect the local and national environment, climate change, concern, understanding and taking action

Strand 5: National Identity and Chinese Culture

- Geography and physical characteristics of the territory of China
- The relationship between the natural world and people's life in China

Strand 6: Global Understanding and the Information Era

- The influence of the physical environment, science, technology and social issues on culture

(EXTENDED) Science and Technology related Learning Activities

"Cross-curricular projects/STEM education activities should account for 19% of total lesson time in the primary school curriculum"



What we will cover from...



The Junior Secondary Curriculum (S1-3)



Arts



(CORE) Arts Education KLA Visual Arts Curriculum

- Nurturing aesthetic sensitivity, creativity and imagination
- Exploring multiple perspectives through art and using it to communicate ideas and emotions
- Cultivating critical responses and expressing these appropriately
- Analysing the use of visual effects and the emotional and psychological responses they evoke
- Connecting the arts with other disciplines for greater understanding of culture and history, and fostering respect for diverse cultural heritages

(EXTENDED) Integrating Arts and Sciences: "The Arts Education KLA can contribute to the promotion of STEM education through incorporating elements of STEM into arts learning activities"

(CORE) Personal, Social and Humanities Education KLA Chinese History Curriculum

- Artworks (jade, bronze and woodwork, ceramics, paintings and more) created or depicting the whole breadth of the timeline studied: from Neolithic times, through various dynasties (Han, Tang, Song, Ming, Qing), to modern-day China

Science & Geography



Science Education KLA Curriculum

(CORE) Unit 1 - Introducing Science

- Recognize that scientific knowledge is derived from systematic observation, experimentation and analysis, through which imagination and creativity is required

(CORE) Unit 3 - Looking at Living Things

- Recognize the importance of biodiversity to the sustainable development of the natural environment, and its benefits to humans (e.g. provision of resources such as food, medicine, raw materials)

(CORE) Unit 7 - Earth and Space

- Recognize that plants are the producers and animals are the consumers in most food chains

Personal, Social and Humanities Education KLA Geography Curriculum

(CORE) Living with Natural Hazards - Are We Better Equipped Than Others?

- Tectonic plates
- Tectonic movement in earthquakes, mountain formation

(Elective) Changing Climate, Changing Environments

- Climate change in Hong Kong, China, and the world
- The impact of climate change on the environment

