

# Optimising Senior Secondary Core Subjects

## English Language

# Curriculum Framework

	English Language Curriculum (Until 2023 HKDSE)	English Language Curriculum (From 2024 HKDSE)
Curriculum Time and Design	<ul style="list-style-type: none"> <li>A total of <b>313-375 hours</b> of lesson time</li> <li><b>75%</b> of the lesson time allocated to the <b>Compulsory Part</b></li> <li><b>25%</b> of the lesson time allocated to the Elective Part for the teaching of <b>2 – 3 elective modules</b></li> </ul>	<ul style="list-style-type: none"> <li><b>Up to about 50 hours can be freed up</b> to allow greater flexibility in curriculum planning through reducing the overlap of the previous Compulsory and Elective Parts</li> <li>The <b>learning elements of the previous Elective Part</b> fully integrated into the curriculum</li> <li>The <b>learning elements of the previous Elective Part</b> taught as <b>enrichment/extension components</b>, with emphasis on the <b>creative use of English</b> through the language arts components</li> </ul>
Cross-curricular Links	<ul style="list-style-type: none"> <li>Strengthening cross-curricular links and collaboration by:               <ul style="list-style-type: none"> <li>➤ promoting the <b>academic use of language</b> through <b>RaC and LaC</b>, as well as <b>co-curricular and life-wide learning activities</b></li> <li>➤ offering <b>Applied Learning (Vocational English)</b> and other <b>English-related Applied Learning courses</b> (including Translation Studies and English for Creative Communication)</li> </ul> </li> </ul>	

# Public Assessment

Assessment Framework for HKDSE English Language Exam **remains the same**

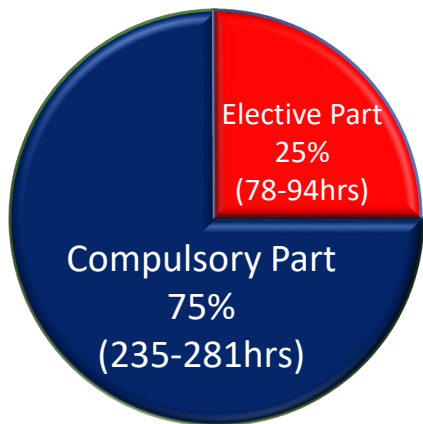
Component		Weighting	Duration
<b>Public Examination</b>	Paper 1 Reading	20%	1½ hours
	Paper 2 Writing	25%	2 hours
	Paper 3 Listening & Integrated Skills	30%	About 2 hours
	Paper 4 Speaking	10%	About 20 minutes
<b>School-based Assessment</b>		15%	

# Public Assessment

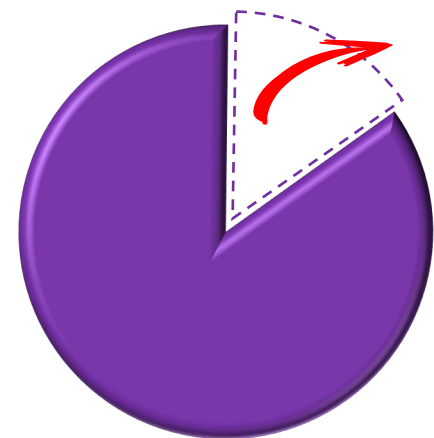
	Public Assessment Design (Until 2023 HKDSE)	Public Assessment Design (from 2024 HKDSE)
Paper 2 (Writing)	<ul style="list-style-type: none"> <li>Part A: <b>1</b> compulsory topic</li> <li>Part B: <b>eight</b> topics, <b>each on one elective module</b> of the Elective Part for students' choice in Part B</li> </ul>	<ul style="list-style-type: none"> <li>Part A: No change</li> <li>Part B: Questions in Part B <b>delinked</b> from the eight former elective modules; and <b>the number of questions reduced from 8 to 4</b> to reduce the reading load on students during the examination and enhance the effectiveness of assessment</li> </ul>
SBA	<ul style="list-style-type: none"> <li>two marks to be submitted, one from the <b>reading/viewing programme</b>, one from the <b>Elective Part</b>, each accounting for 7.5 % of the total subject mark</li> <li><b>4 texts</b> to be read/viewed in the course of 3 years in preparation for the SBA</li> </ul>	<ul style="list-style-type: none"> <li>the SBA <b>streamlined</b> to facilitate more focused learning and teaching:               <ul style="list-style-type: none"> <li>- two marks to be submitted based <b>only on the reading/viewing programme</b></li> <li>- the <b>number of texts</b> to be read/viewed <b>adjusted to 2 - 4</b></li> </ul> </li> </ul>

# Flexible Use of Curriculum Time

Senior Secondary English Language Curriculum (up to 2023 HKDSE):  
313-375 hrs



Optimised teaching arrangements for Senior Secondary English Language (from 2024 HKDSE)



Up to about 50 hrs can be freed up to better cater for learner diversity, depending on the school context and students' needs

# Support Measures for the Optimisation of Senior Secondary English Language – Designated Webpage on “Optimising Senior Secondary English Language”

## Optimising Senior Secondary English Language

### Background

In tandem with one of the recommendations set out in the review report with the theme “Optimise the curriculum for the future, Foster whole person development and diverse talents” of the Task Force on Review of School Curriculum (Task Force), the committees on the four senior secondary (SS) core subjects under the Curriculum Development Council (CDC) and the Hong Kong Examinations and Assessment Authority (HKEAA) have formulated proposals to optimise the respective curricula and assessments of the subjects, thereby creating space for students and catering for learner diversity.

**Short Video: Optimising the Four Senior Secondary Core Subjects – English Language**



Flexible Arrangements to Cater for Learner Diversity  
Multifarious Activities to Enhance English Learning

### References and Resources

English Language Curriculum and Assessment Guide  
(Secondary 4 - 6) (2021)  
(effective from Secondary 4 in the 2021/22 school  
year)

PDF

Relevant information and resources on “Optimising Senior Secondary English Language” are provided for schools’ reference

Resource Kit on the Academic Use of English **NEW**



Resource Kit on the Creative Use of English: A  
Collection of Six Posters and Activity Sheets **NEW**



### Professional Development Programme

Optimising Senior Secondary English Language (June  
2021)

PDF

### EDB Circular Memorandum

Curriculum Documents in Support of the Optimised  
Senior Secondary Core Subjects and Supplementary  
Notes to the Secondary Education Curriculum Guide  
(2017) (EDBCM 72/2021)

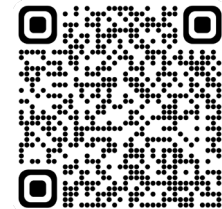
EDBCM no. 72/2021

Measures to Optimise the Four Senior Secondary  
Core Subjects (EDBCM 39/2021)

EDBCM no. 39/2021

Optimising the Four Senior Secondary Core Subjects  
to Create Space for Students and Cater for Learner  
Diversity : School Questionnaire Survey and School  
Briefing Sessions (EDBCM 20/2021)

EDBCM no. 20/2021

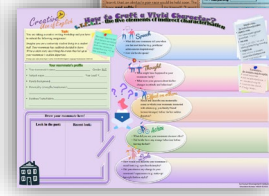
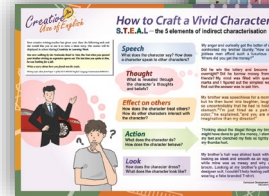
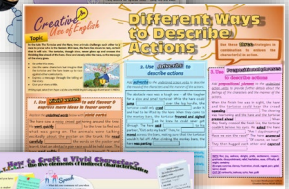
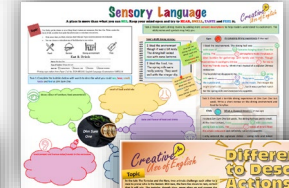
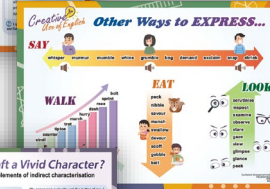
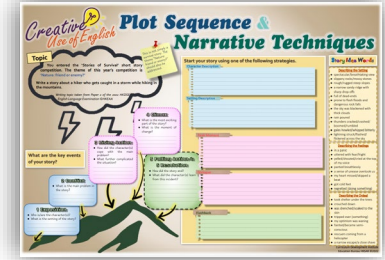
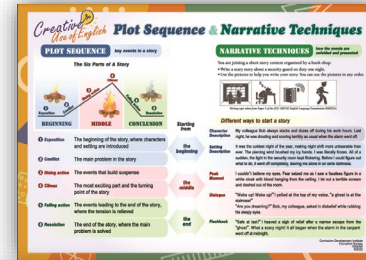
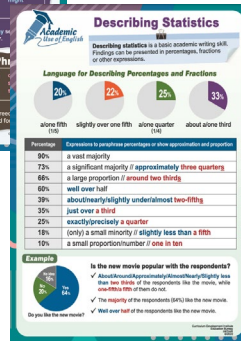
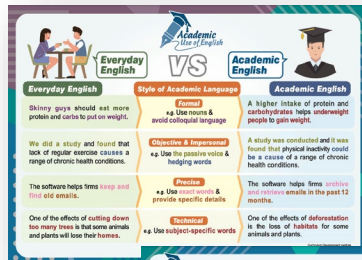


[https://www.edb.gov.hk/en/curriculum-development/kla/eng-edu/optimising\\_SS\\_English\\_Language.html](https://www.edb.gov.hk/en/curriculum-development/kla/eng-edu/optimising_SS_English_Language.html)

# Support Measures for the Optimisation of Senior Secondary English Language – Learning and Teaching Materials

## Academic Use of English

## Creative Use of English



## Resource Pack & Posters on Academic Use of English

<https://www.edb.gov.hk/en/curriculum-development/kla/eng-edu/references-resources/Academic-Eng/home.html>

## Posters & Activity Sheets on Creative Use of English

<https://www.edb.gov.hk/en/curriculum-development/kla/eng-edu/references-resources/Creative-Eng/home.html>

## Support Measures for the Optimisation of Senior Secondary English Language – Professional Development Programmes (PDPs) (2023/24 School Year)

	PDPs	Month	Target Groups
1	Introduction to English-related Applied Learning Courses	Jan – Feb 2024	English Language Teachers, ApL Course Co- ordinators
2	Optimising Senior Secondary English Language Series: (1) Integrating and Connecting Different Curriculum and Assessment Components	Jan & Jul 2024	English Panel Heads Curriculum Leaders
3	Optimising Senior Secondary English Language Series: (2) Using Language Arts to Promote the Creative Use of English	Jan – Mar 2024	English Language Teachers
4	Optimising Senior Secondary English Language Series: (3) The Role of Grammar and Vocabulary in Academic Reading and Writing	Apr – Jun 2024	English Language Teachers