

中學學位分配辦法簡介

2023/2025 年度

Information Leaflet on the Secondary School Places Allocation System 2023/2025 Cycle

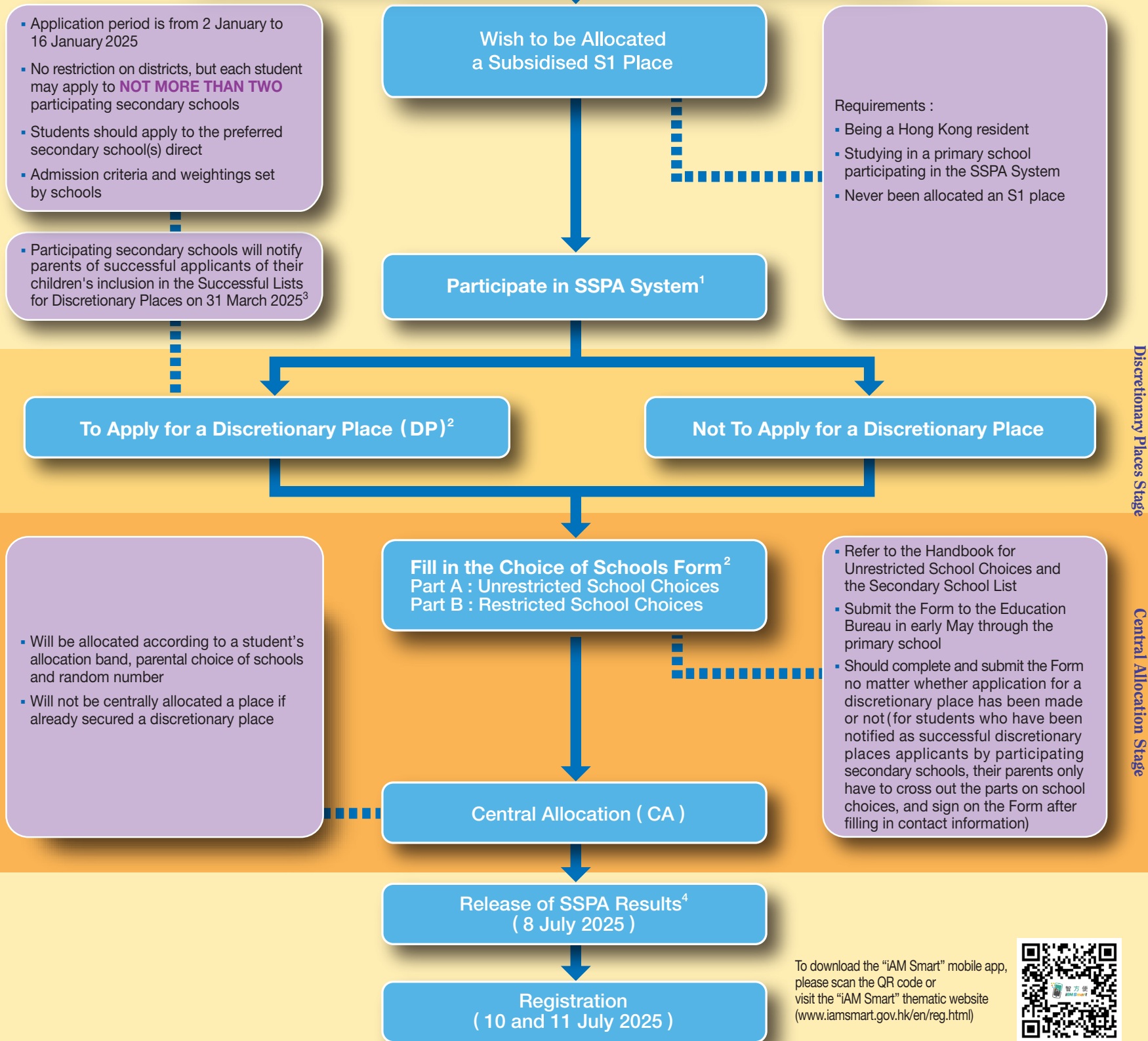


中華人民共和國香港特別行政區政府
教育局

Education Bureau
The Government of the Hong Kong Special Administrative Region
of the People's Republic of China



Admission to Secondary 1 (S1) in September 2025



¹ EDB has implemented digitalisation of S1 admissions. EDB encourages parents to register with "iAM Smart+" as early as possible for more convenient and faster services throughout the entire S1 application process. Details regarding the SSPA e-Platform, the series of related videos and Parent's Guides will be announced on the EDB's homepage in due course.

² Parents who have registered as SSPA e-Platform users with "iAM Smart+" may submit the applications for DP, CA and cross-net allocation (if necessary) via the SSPA e-Platform.

³ Parents who have registered as SSPA e-Platform users with "iAM Smart" or "iAM Smart+" may also view notifications for successful DP applicants via the SSPA e-Platform starting from 10 am on the same day.

⁴ Parents who have registered as SSPA e-Platform users with "iAM Smart" or "iAM Smart+" may view the allocation results via the SSPA e-Platform starting from 10 am on the same day.

Secondary School Places Allocation System

The Secondary School Places Allocation (SSPA) System is divided into two stages :
Discretionary Places (DP) and Central Allocation (CA).

Discretionary Places Stage

- All secondary schools participating in the SSPA System are allowed to reserve not more than 30% of their Secondary 1 (S1) places as DP for admission of students*.
- All participating secondary schools accept applications within the same period. The application period for this cycle is from 2 January to 16 January 2025.
- The Education Bureau (EDB) will distribute two copies of Application Form for Secondary One Discretionary Place, and Notes for Parents on Application for Secondary One Discretionary Places to each Primary 6 (P6) student in early December 2024. As regards the lists of participating secondary schools accepting applications for S1 DP, parents may refer to the Handbook for Application for Secondary One Discretionary Places distributed to the primary schools. Parents may also visit the EDB's Homepage (www.edb.gov.hk) or use the fax service of the EDB's 24-hour Automatic Telephone Enquiry System (Tel. 2891 0088) to obtain the lists. In addition, for more convenient and faster services throughout the entire S1 application process, parents may register an SSPA e-Platform account with their child's Student Reference Number and the Activation Code distributed by the primary schools.
- DP application is not subject to restriction on districts. However, each student may apply to **NOT MORE THAN TWO** participating secondary schools listed in the Handbook for Application for Secondary One Discretionary Places. Otherwise, the DP applications will be rendered void.
- Each student is given two copies of Application Form for Secondary One Discretionary Place, one of which carries Order of School Preference 1 and the other Order of School Preference 2. Order of School Preference 1 stands for the first choice and Order of School Preference 2 stands for the second choice.
- Parents should fill in the name of secondary school applied to on all parts of the Application Form for Secondary One Discretionary Place according to their order of preference. They should first tear off the part containing the Order of School Preference for retention before submitting the form to the school direct. Parents should receive from the school the Parent's Copy bearing the school chop, school name and school code as acknowledgement after submitting the form. For details on the submission of DP applications via SSPA e-Platform, parents may refer to the Notes for Parents on Application for Secondary One Discretionary Places to be distributed in early December 2024.
- Schools may admit suitable students according to their educational philosophy and characteristics. However, they must make public the admission criteria and weightings prior to admission. Schools may arrange interviews, but no written test should be conducted.
- Participating secondary schools will notify parents of successful applicants of their children's inclusion in the Successful Lists for Discretionary Places on 31 March 2025. Parents who have registered as SSPA e-Platform users with "iAM Smart" or "iAM Smart+" may also view notifications for successful DP applicants via the SSPA e-Platform on the same day. These notification arrangements are not applicable to reserve and unsuccessful applicants, **nor are the notifications the allocation results**. The parents concerned do not need to reply to the secondary schools concerned on whether they would accept the DP offers.
- If the parents who receive notifications from participating secondary schools have also successfully applied for a school place in a non-participating Direct Subsidy Scheme (NDSS) secondary school for their children, they should decide whether to accept the offer on or before 8 April 2025. If parents decide to retain the school place offered by the NDSS secondary school, they should disregard the notifications from participating secondary schools. If they decide to decline the offer from the NDSS secondary school, they should notify the NDSS secondary school concerned and retrieve the signed Parent's Undertaking and the original of the Primary 6 Student Record Form on or before 8 April 2025 in order to retain the DP which they have successfully obtained.
- EDB will match students' preferences against schools' Successful/Reserve Lists for Discretionary Places. If a student has received notifications of successful DP applications from two participating secondary schools, and has not accepted a school place from any NDSS secondary schools, he/she will be allocated an S1 place of his/her first-choice school based on his/her order of preference.
- Some students (including those who have not received any notification or those who have received notification from the school of their second choice only) may be allocated with an S1 place in schools they have applied to in the DP stage (including schools of their first choice) in the capacity of reserve applicants.
- Successful DP applicants will not be allocated a place again in CA. Those who have not been successful in obtaining a DP will be allocated an S1 place in CA. Hence, parents of successful DP applicants do not need to fill out the Choice of Schools Forms at the CA stage. They should cross out the parts on school choices, and sign on the Choice Form after filling in contact information.
- The results of DP and CA will be released at the same time on 8 July 2025.
- Before applying to a school, parents should fully consider all aspects of the school such as its educational philosophy, tradition, religion, admission criteria, class structure, development and operation, as well as their child's characteristics, personality, abilities and interests so as to make a suitable school choice. The applications, once submitted, cannot be retrieved or cancelled, and no change can be made to the order of school preference.
- Parents may also seek advice from teachers and make reference to available information about the school(s), or contact the school(s) concerned direct for enquiries.

* Participating Direct Subsidy Scheme (DSS) secondary schools may reserve more than 30% of their S1 places as DP.

Central Allocation Stage

- After the deduction of repeater and discretionary places, the remaining places in a secondary school are used for CA. Of the CA places, 10% are for unrestricted school choices, and the remaining 90% are for restricted school choices.
- In line with the administrative districts, the whole territory is divided into 18 school nets. In principle, the secondary school net to which a student belongs is determined by the physical location of the primary school the student attends.
- Each school net comprises all the participating primary and secondary schools in the district and a number of secondary schools in other districts providing school places for the net. The number of secondary schools and school places provided from other districts may vary from year to year according to the demand and supply situation.
- If change of school net is necessary, parents may submit an application for cross-net allocation to EDB through the primary school their child is attending before late February. Parents who have registered as SSPA e-Platform users with "iAM Smart+" may submit the application for cross-net allocation via the SSPA e-Platform. A successful applicant will be allocated an S1 place in the new school net for which he/she is approved.
- CA is based on a student's allocation band, parental choice of schools and random number.



Allocation Band

- Students' internal assessment results will be used for the calculation of allocation bands and other education-related purposes.
- Students' internal assessment results at the end of Primary 5, and both in mid-year and at the end of P6 will be standardised. The average of the sampled results of the Pre-Secondary One Hong Kong Attainment Test 2018 and 2024 will be used to scale students' internal assessment results. Since the Pre-Secondary One Hong Kong Attainment Test results will not have a direct bearing on the students' own allocation results, drilling for the test is not required.
- The scaled marks of all students in the territory will be put into an order of merit. Then the students will be equally divided into three **Territory Bands**, each consisting of 1/3 of the total number of primary students in the territory. Territory Bands are only for allocation of places for unrestricted school choices.
- As regards allocation of school places in the school nets, the scaled marks of all students within the same net will be put into an order of merit. Then the students will be equally divided into three **Net Bands**, each consisting of 1/3 of the total number of primary students in the school net. Net Bands are only for allocation of places for restricted school choices.

Choice of Schools

- In early April 2025, EDB will distribute to each P6 student a Secondary One Choice of Schools Form, Notes for Parents on Central Allocation, and a Secondary School List of the school net he/she belongs to. As regards the lists of schools for unrestricted school choices, parents may refer to the Handbook for Unrestricted School Choices distributed to the primary schools. Parents may also visit the EDB's Homepage (www.edb.gov.hk) or use the fax service of the EDB's 24-hour Automatic Telephone Enquiry System (Tel. 2891 0088) to obtain the lists. For details on the submission of CA applications via the SSPA e-Platform, parents may refer to the Notes for Parents on Central Allocation to be distributed in early April 2025.
- Before making school choices, parents should fully consider all aspects of the school such as its educational philosophy, tradition, religion, class structure, development and operation, as well as their child's characteristics, personality, abilities and interests so as to make suitable school choices. Besides, parents may seek advice from teachers and make reference to available information about the school(s), or contact the school(s) concerned direct for enquiries.
- The Secondary One Choice of Schools Form is divided into:

Part A : Unrestricted School Choices

- Parents should refer to the Handbook for Unrestricted School Choices. Based on their preference, they should choose a maximum of three secondary schools from any school nets including the one to which their child belongs, and place them in order of preference in the form.

Part B : Restricted School Choices

- Parents should refer to the Secondary School List of the net to which their child belongs and, as far as possible, fill up the 30 choices based on the order of preference.
- Allocation of school places is based on parents' school choices, and conducted through a computerised allocation process.

Random Number

- The random number is generated by the computer before running the central allocation program. It is used to determine the order of allocation within the same allocation band.
- If the demand for school places of a certain secondary school exceeds the supply, the student possessing a smaller random number within the same allocation band will be allocated a place first.
- The random number has no connection with the Student Reference Number or the student's personal data.

Allocation Process

- The Unrestricted School Choices in Part A will be processed first, to be followed by the Restricted School Choices in Part B.
- When processing the Unrestricted School Choices in Part A, the computer will first allocate school places to students in Territory Band 1 according to their order of preference of school choices. After screening the school choices of all these students, the computer will follow the same procedure to process the school choices of students in Territory Band 2 and finally those of Territory Band 3 students.
- Students successful in obtaining a place in Part A will not be allocated a place in Part B. If a student is not allocated a school place in Part A after all his/her school choices have been exhausted, he/she will be allocated a place in Part B.
- When processing the Restricted School Choices in Part B, the computer will first allocate school places to students in Net Band 1 according to their order of preference of school choices. If a student cannot be allocated a school place even after all his/her school choices have been exhausted, the computer will allocate a place to him/her from the remaining places in the school net.
- After all the students in Net Band 1 have been allocated school places, the computer will follow the same procedure to process the choices of students in Net Band 2 and finally those of Net Band 3 students.

Feeder and Nominated Schools

- In general, after the deduction of repeater and discretionary places, a feeder secondary school has to reserve 85% of the remaining places for its feeder primary school(s), and a nominated secondary school 25% of the remaining places for its nominated primary school(s) at the CA stage.
- A P6 student of a feeder or nominated school is eligible for a reserved place if he/she is in Net Band 1 or 2 and has chosen the feeder or nominated secondary school as his/her first choice in Part B.
- If the number of eligible students exceeds the number of reserved places, the order of priority for allocation will be based on the student's Net Band and random number until all the reserved places are filled. All unused reserved places, if any, will be automatically used as open places for open allocation.
- If a P6 student of a feeder or nominated school is approved for cross-net allocation, he/she will not be eligible for a reserved place of the feeder or nominated secondary school(s).

“Through-train” Schools

- A P6 student of a “through-train” school may choose to proceed to its linked secondary school direct. If the student applies for DP of participating secondary schools or S1 places of NDSS secondary schools (no matter successful or not), or participates in CA, he/she will not be allowed to retain the right to proceed direct to the linked secondary school.
- “Through-train” secondary schools, in principle, are required to reserve not less than 15% of their total number of S1 places for admitting students of other primary schools through DP or CA.

Enquiries

Parents seeking further information may contact the School Places Allocation Section of EDB.

Address: Podium Floor, West Block,
Education Bureau Kowloon Tong Education Services Centre,
19 Suffolk Road, Kowloon Tong, Kowloon

Telephone No.: 2832 7740 or 2832 7700 Website: www.edb.gov.hk

For video illustrations of the SSPA System, please scan the QR code or visit the EDB's website (<https://www.edb.gov.hk>) (Select: Home > Education System and Policy > Primary and Secondary Education > School Places Allocation Systems > Secondary School Places Allocation (SSPA) System > Video on the SSPA System 2023/2025 Cycle)

