

Learning Support and Accommodation

Schools will:

- Enhance students' learning effectiveness through improvement to the quality of classroom teaching and introduction of appropriate teaching strategies.
- Provide students with additional small group and/or individual counselling according to their conditions and needs.
- Make available assignment and assessment accommodation that suit students' needs. Parents could learn more about the accommodation arrangements from the school/teachers and offer their views.
- Devise transition support plans for Primary One students with SEN and inform parents of the implementation details to ensure the effectiveness of the support measures through parents' coordinated efforts.

Forstering the Growth of Children through Home-School Cooperation

With parents' love and care as well as the school's guidance and support, which are equally important to children's development, children should be able to overcome difficulties and grow up healthily by making an effort themselves.



Online Resources

1. Parent and Public Education

<https://www.edb.gov.hk/en/edu-system/special/support/wsa/public-edu/index.html>

2. Special Education Resource Centre

<https://www.edb.gov.hk/en/edu-system/special/resources/serc/index.html>

3. Smart Parent Net

<https://www.parent.edu.hk/en/home>

4. School Profiles

Primary School Profiles:

<https://www.chsc.hk/primary/en>

Special School Profiles (Chinese version only):

<https://www.chsc.hk/spsp>

5. Education Bureau

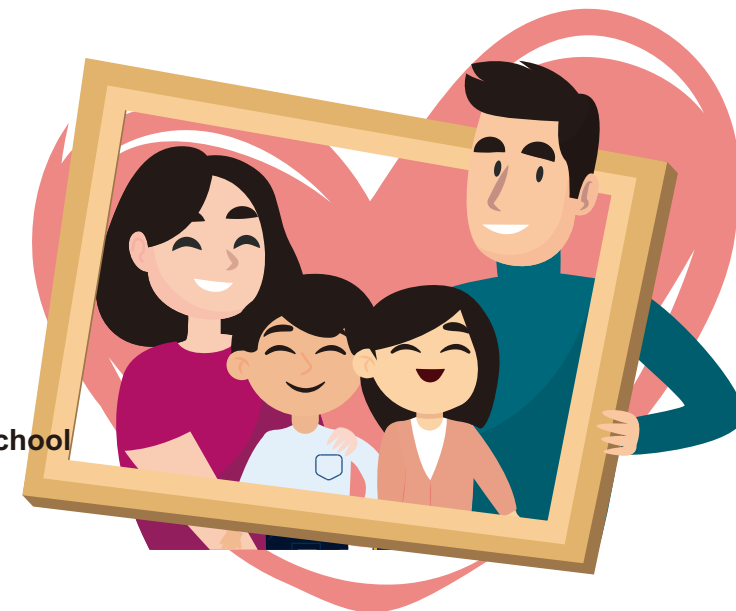
<https://www.edb.gov.hk/en/index.html>

6. Parent Guide on the Whole School Approach to Integrated Education

<https://www.edb.gov.hk/attachment/en/edu-system/special/support/wsa/ieparentguide.pdf>

Early Intervention with Home-School Cooperation

Fact sheet for Parents of Primary One Students with Special Educational Needs



Education Bureau
2020

Introduction

Proceeding to primary schooling is an important milestone on children's path of development. In partnership with schools, parents could help children with special educational needs (SEN) adapt to school life when they start receiving primary education so that they are able to enjoy learning and develop potential fully.



Information transfer and Early Intervention

The Education Bureau (EDB), the Social Welfare Department and the Child Assessment Service under the Department of Health and the Hospital Authority have put in place a collaborative mechanism for information transfer to enable primary schools' early identification of the SEN of Primary One students and provision of timely support for them.

Hospital Authority/
Department of Health
Child Assessment Service

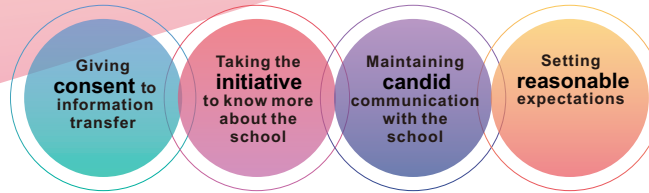
Education
Bureau

Social Welfare
Department



Primary School

Role of Parents



To help children adapt to primary school life, parents could:

Provide information about their children

- Give consent to transferring their children's assessment information and/or progress report related to learning and development at the pre-primary stage to primary schools so that the school can understand the SEN of these children and arrange appropriate support services for their smooth integration into primary school life.
- Give consent to having the relevant information of their children recorded in the EDB's Special Education Management Information System so that the school can take continued actions systematically to follow up on and keep track of the conditions of these children.

Enhance their understanding of the school

- Enhance their understanding of the school through participating in its school activities, looking up the Primary School Profiles and browsing the school website.

Maintain candid communication with the school

- Maintain communication and cooperation with teachers (e.g. the class teacher or the Special Educational Needs Coordinator).
- Attend activities for parents, case conferences, etc. and take an active role in complementing the school's support measures.

Set reasonable expectations

- Set reasonable expectations for their children and offer them support and encouragement.

Support Services in Primary Schools

Professional Team

The professional team in school would work hand in hand with parents to help students with SEN.

Apart from the school head and teachers, the professional team also comprises:

- Special Educational Needs Coordinator
- School-based Educational Psychologist
- School-based Speech Therapist
- School Guidance Teacher, School Social Worker or other student guidance personnel

School-based
Educational Psychologist



School-based
Speech Therapist



School Head and Teachers



Special Educational Needs
Coordinator



School Guidance Teacher,
School Social Worker or
other student guidance personnel