

Developing a School Self- evaluation (SSE) culture

Cumberland Presbyterian Church
Yao Dao Secondary School
金巴崙長老會耀道中學

Cumberland Presbyterian Church
Yao Dao Secondary School
金巴崙長老會耀道中學

Principal

Joshua Lau 柳子權

Vice-principal

Sammy Sam 岑嘉智

Assistant principal

Emmy Wan 尹再英

Marvin Mok 莫文烽

School Background

CPC Yao Dao Sec School



Location

Yuen Long



Founded in

2005



School Type

Aided School



Religion

Christianity

Building an SSE Culture

1. Towards participatory leadership

- Openness
 - Good Communication
 - Unity
 - Flexibility
-

2. Enhance teachers' professional capacity

- Internal Short PD Program
- i-Journey
- InnoPower
- Sabbatical Leave Scheme
- Professional Sharing

3. Facilitate information exchange

- ◆ Digital Workspace
 - ◆ All teachers are ready to share and receive feedback from others
-

	A	B	C	D	E	F	G	H	I	J	K	L	M	N	O	P	Q	R	S	T	
1		MC	重點關注事項	負責委員會				目標	推行方法(策略)	預期成效	成功準則	評估方法	時間表	負責委員會	負責人	進度匯報 6/1/2021	進度匯報 8/5/2021	工作描述 31/7/2021	檢討及意見 31/7/2021	建議 31/7/2021	
28	29	20-21	2	STEAM 創新課程	TEE	科技學習領域		配合T&M的課程，提供創作需要的技能及知識	設定CTE及TE科目內容以配合T&M的需要	學生在T&M的課程的創作不會受到認知能力及技能不足而影響成果	學生能在T&M的課程展現CTE及TE所學	檢視T&M學生創作的困難	全年	TEE	WWW.SK						
29	30	20-21	2	STEAM 創新課程	STM	STEAM教育組		完善初中的T&M課程	完善中一至中二級T&M的學習活動，並發展中三級課程。	能按DEEP LEARNING理念發展校本STEAM課程。	學生能表現DEEP LEARNING的6C能力	教師觀察，課堂評估	全年	STM	SKC						
31	32	20-21	2	營造STEAM校園環境	STM	STEAM教育組		營造STEAM校園文化	推行午間及放後校園STEAM活動，舉辦多類型教師工作坊，鼓勵教師使用各類STEAM創作。	更多教師運用STEAM，更多學生對STEAM創作有興趣	比本年度更多學生主動參與STEAM活動，比本年度更多老師在校園內運用STEAM元素於內容。	觀察、活動紀錄、STEAM會議討論	全年	STM	SKC						
44	45	20-21	3	權權人主題：智華	CGC	輔導委員會		鞏固學長文化	● 輔導領袖生計劃 ● 多元化輔導小組	● 期待學生較以往主動積極參與活動，被服務對象獲得的滿意度得他人。	● 提升參加輔導小組學生的抗挫力 ● 提升輔導領袖生及輔導小組組員的信心及歸屬感。	● 老師觀察及會議 ● 問卷	全年	CGC	LCN						
45	46	20-21	3	權權人主題：智華	CGC	輔導委員會		推行生命教育大型活動	● 級本大型活動 ● 透過跨委員會合作，建立學生正向價值觀(主題：智華) ● 中二Superclass	● 學生較以往尊重權權人的身份，學生的言談和與人相處之間能展現正向價值觀	● 提升學生對權權人的身份認同 ● 學生有更正面的思維	● 老師觀察及會議	全年	CGC	LCN						
								配合T&M的主題，於	1. 透過領袖訓練，讓同學學習如何												

Data-driven Evaluation

Data accessible to
Everyone

聯合國教育、科學與文化組織 (UNESCO)

Who may use data in education?

Classroom teachers, Head teachers, parents and communities,.....

For what purposes?

- Improvement in resource allocation
 - policy-making
-

Use of data at school level – MC formation practice

Holistic Review:

- APASO
 - SWOT
 - SEC enlarged Members
 - Student Support Domain Coordinators
-

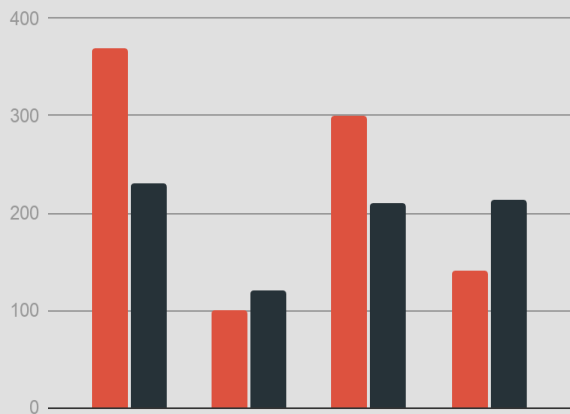
From evaluation to planning

Evaluation → Suggestion → Planning

Student Support Domain Meeting

Identify students' needs through integrative use of qualitative & quantitative data

APASO



□ 中一級的前測後測比較

Observation

01

Social Worker

因壓力問題而求助學生增加

02

Teacher A

學生出席率下降

03

Teacher B

學生參與聯課活動的比率下降

Formation of M.C. & Implementation strategies

Suggestions from SSD:

1. School MC - Positive Education (Whole-school approach)
2. Exploration of Methods
3. External Resources

To sustain and deepen:

- a. 3-year collaboration with NGO +3-year school-based modification
 - b. 6-year students' school life
-

YDers (耀道人)

→

Positive Edu

→

Life Education

Use of data at departmental level

01

Improve L&T strategies

02

Formulate support measures

03

Inform resource allocation

01

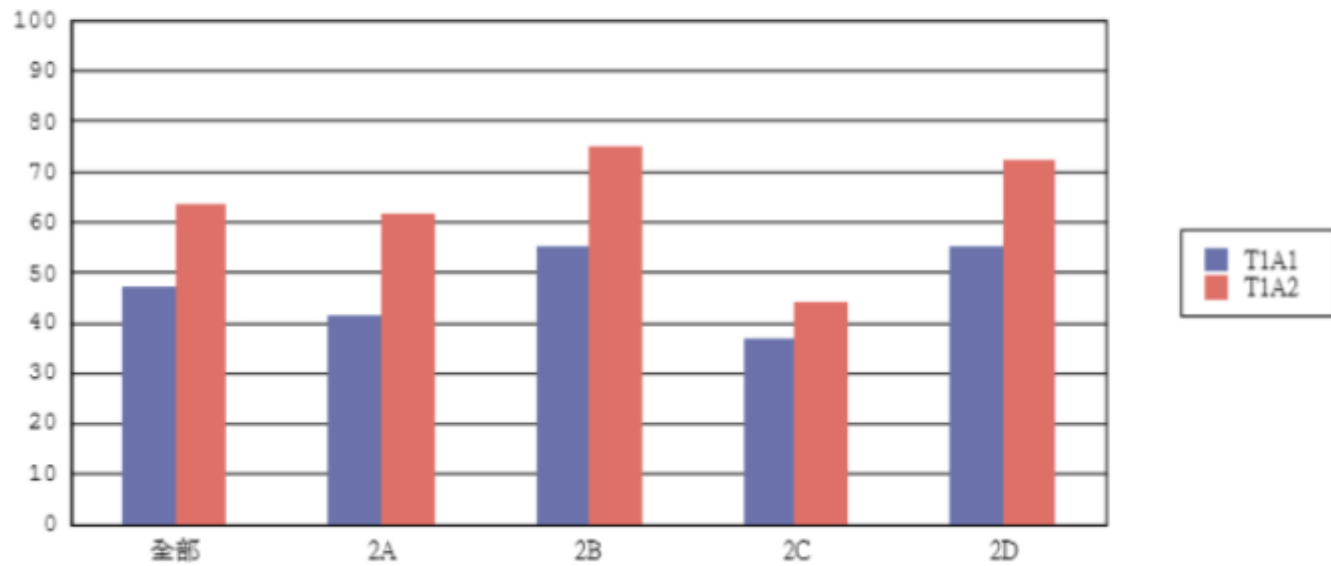
Improve L&T strategies

KLA: Mathematics

- S2 CoP investigate a teaching method (horizontal data)
control group v.s. experimental group
- KLA evaluation meeting (vertical data)
 - Analyse every level and report to all (use statistical graphs and tables)
 - Every Math teacher has the whole picture of the performance of students.
 - Trace academic result data throughout the year
→ adjust and apply suitable teaching strategy from the beginning of the year.

T1A1 和 T1A2 的平均分(%)比較
數學

平均分 (%)



02

Formulate support measures- CIS: DSE predictions

Class Teacher

Consultation

Subject Teacher

Make plans for the target group

KLA co

Resource allocation, plans

CIS coordinator

Arrange whole-school resources and set priority / rules

CEC teachers

Advise different further study paths for students

SEC

Coordination

AMP (academic mentorship program)

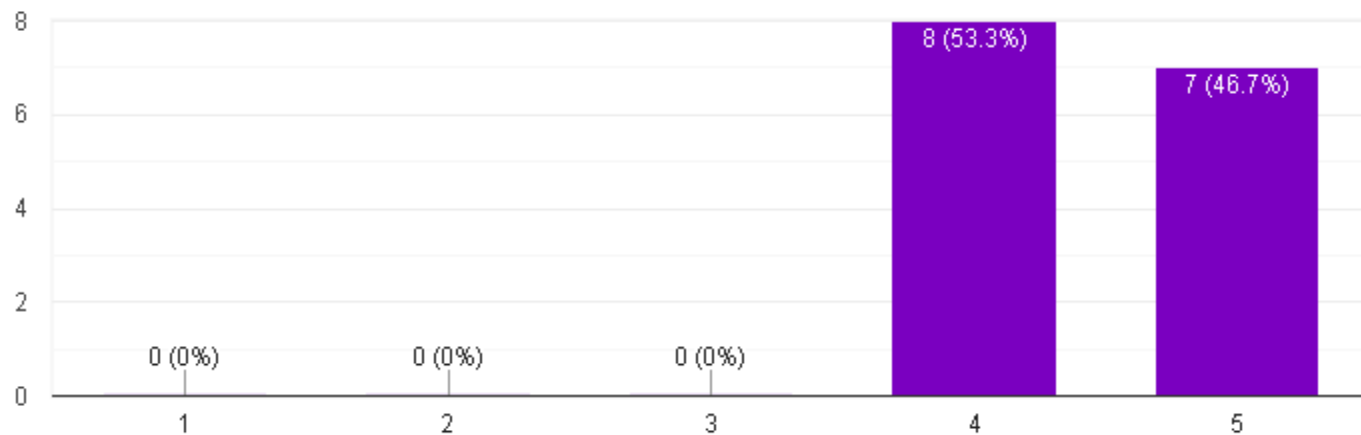
03 Inform resource allocation

- Teachers' Development Day evaluation
- Students' feedback form
- Task preference
- Questionnaire of teacher appraisal
- SWOT analysis

About AI

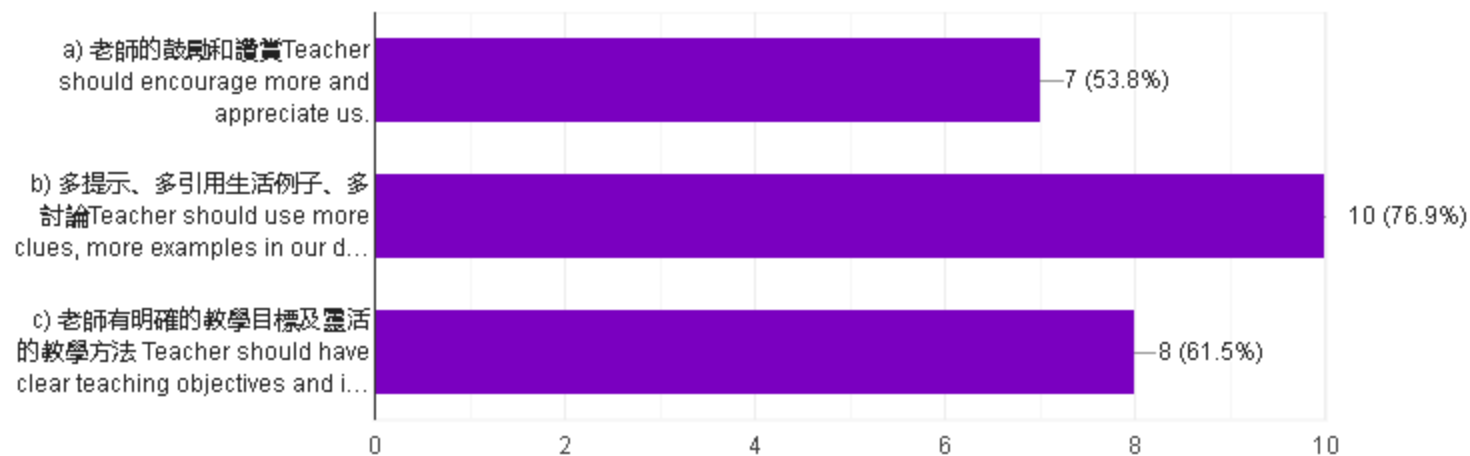
The workshop helped me know more about the development of AI.

15 則回應



3. 我認為老師可透過下列方法協助我(們)提升學習的效能，可選多於一項。 I think the following ways can help me to improve my efficiency in learning :

13 則回應



Conclusion

Making good use of data

- Improve resource allocation
 - Facilitate continuous school improvement
-

Thanks!

Any questions?

info@cpcydss.edu.hk

柳子權校長