

'Go Green on Lamma Island' Programme
Pre-trip Activities

Set 1

Name: _____ () S. _____ Date: _____

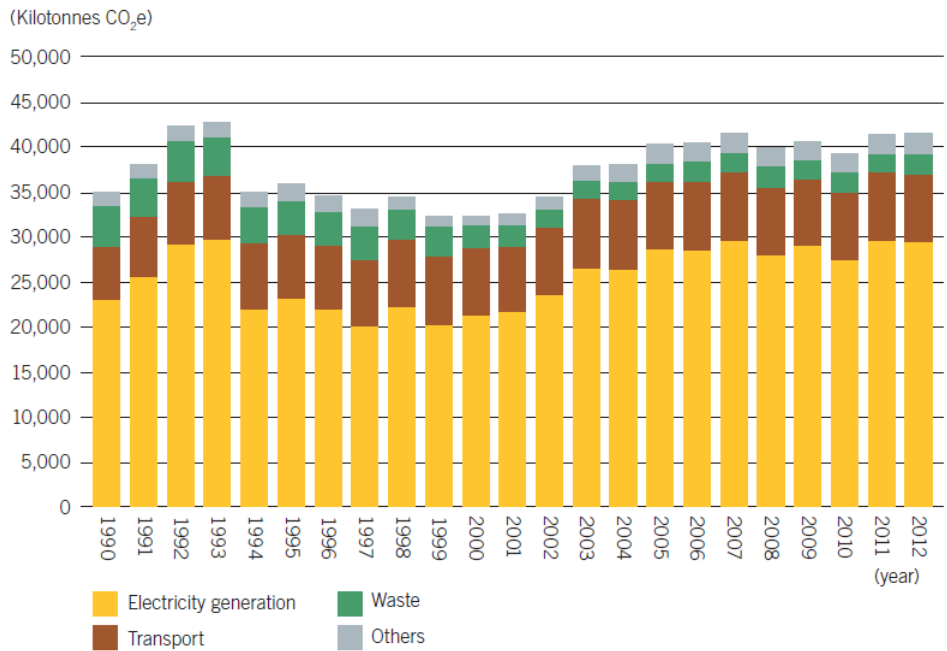
Read the article on climate change and answer the following questions.

To be provided by teacher.

1. What problem may occur on Lamma Island by 2030? (Suggested question)

2. Figure 1 shows the trend in greenhouse gas emission for Hong Kong, 1990-2012.

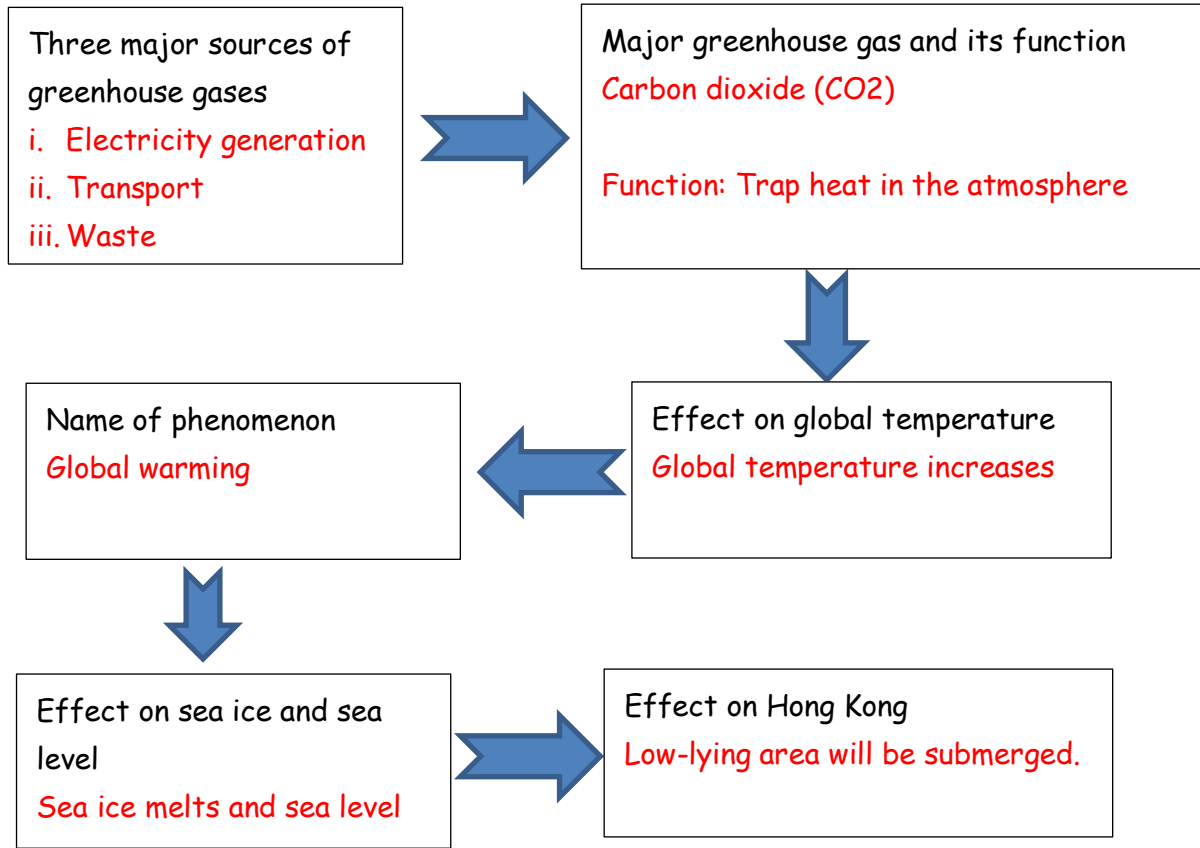
Figure 1



Source: Hong Kong Climate Change Report 2015

<http://www.enb.gov.hk/sites/default/files/pdf/ClimateChangeEng.pdf>

How does Hong Kong contribute to the problem mentioned in Question 1?



3. Suggest what the government should be done to combat climate change.

i. Enhance education for sustainable development.

ii. Encourage citizen to use less energy and use more public transport

or any reasonable answers.

Questions you need to address in the field trip

1. Are there any human activities leading to climate change on Lamma Island?
2. What measures have been done to combat global warming on Lamma Island? Are they effective enough?
3. What other sustainable measures can be used to reduce climate change?
4. What can we do to combat climate change in our daily lives?