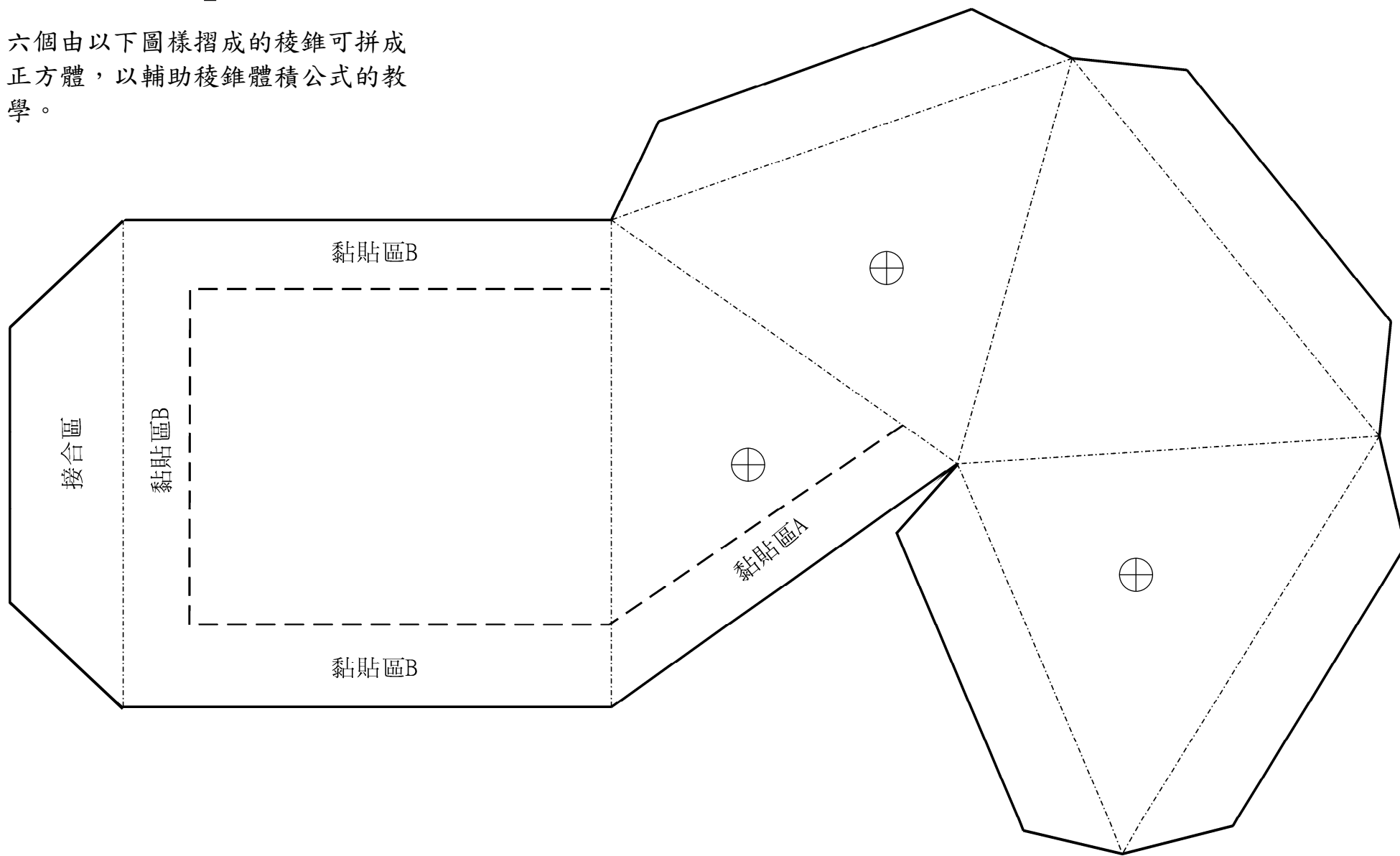
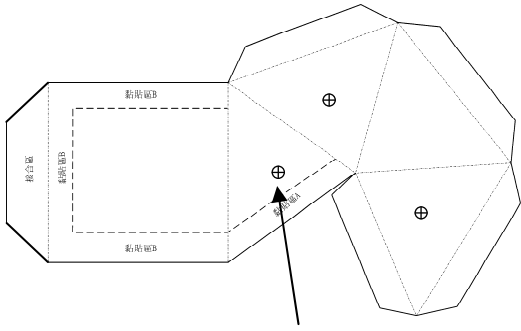


「六錐合一」

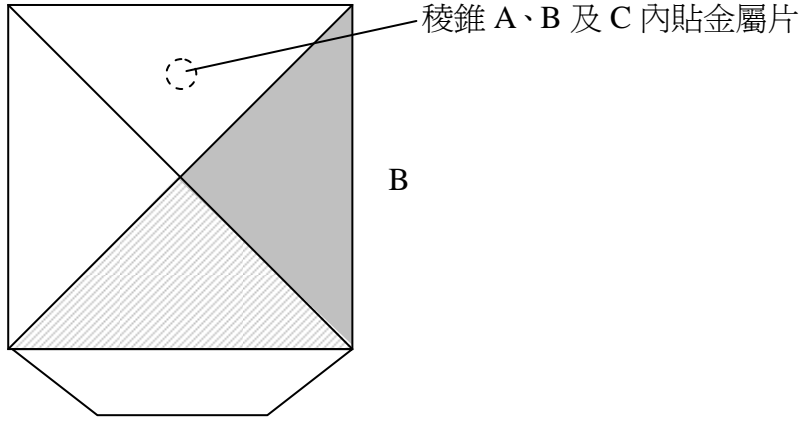
六個由以下圖樣摺成的稜錐可拼成正方體，以輔助稜錐體積公式的教學。



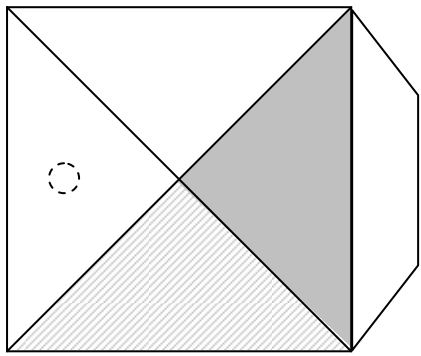
六錐合一組合說明



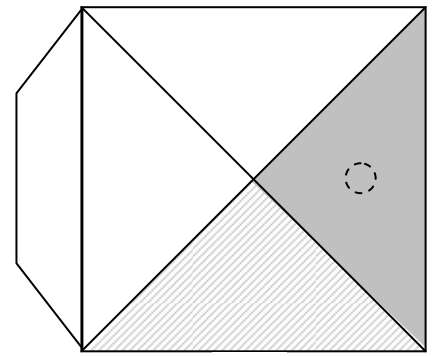
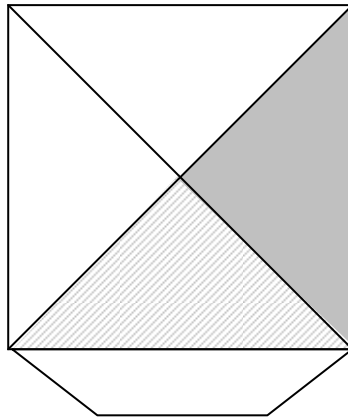
稜錐 A、B 及 C：金屬片黏貼位置



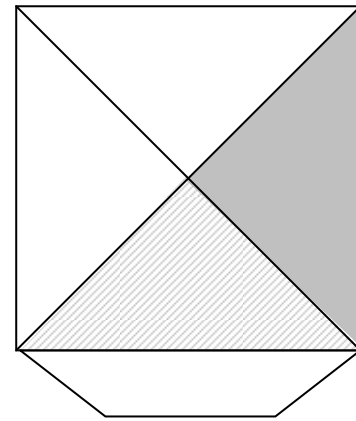
稜錐 A、B 及 C 內貼金屬片



A



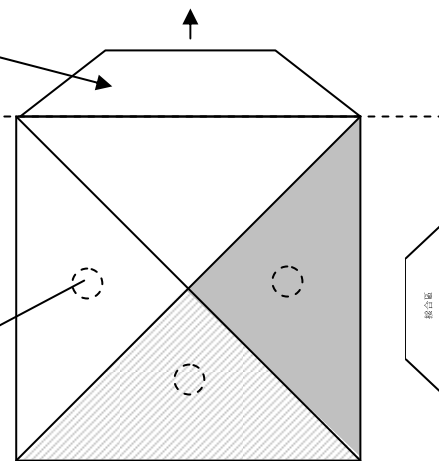
C



將接合區剪去



稜錐 D 內貼磁石



D

稜錐 D：貼上 3 片磁石

