

Utilising the Student Talent Pool to Plan and Implement School-based Gifted Education



Establishment of the School-based Student Talent Pool

(using WebSAMS Talent Databank Module, spreadsheet and other online platforms, etc.)

- Adopt **multiple criteria, channels** and **tools** for identification of gifted students
- Identify **gifted underachievers** and **twice-exceptional students**

Identification of Students

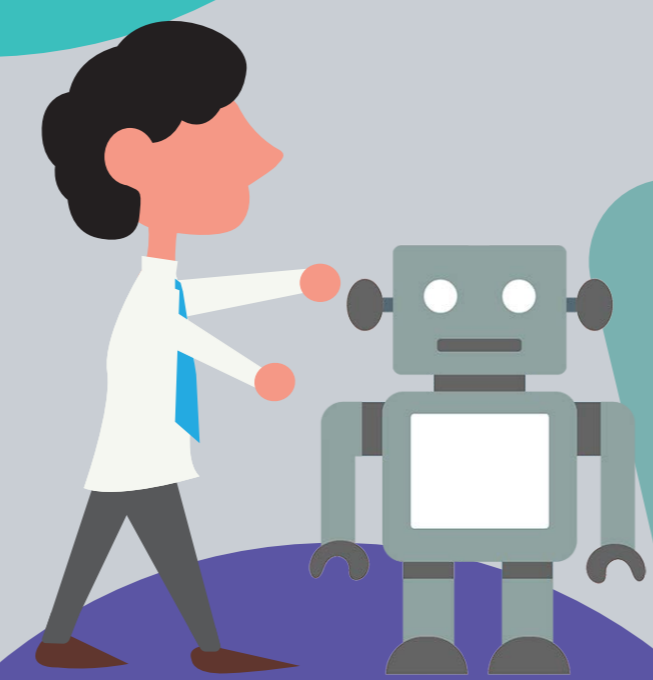


School Administration and Development

- Teacher training: understand various talents of students and the importance of setting up a **school-based talent pool**
- Provide clear direction on the setting of **school-based policy and practice** to enhance the development of school-based gifted education

- Raise teachers' awareness of the **diversified learning needs** of gifted students
- **Plan and review** "Level 1 Whole-class Gifted Education Programmes" and "Level 2 School-based Pull-out Programmes"
- **Develop school-based gifted programmes** after understanding the multiple intelligences and learning needs of gifted students

Curriculum Development and Implementation



Student Development

- **Select students** to participate in school-based training/ enrichment programmes
- Foster gifted students' **cognitive and affective development** through different types of school-based enrichment programmes

- **Showcase students' learning outcomes** in various areas and inform stakeholders about students' potential and achievements through **different channels**:
 - prize-giving ceremony/ sharing
 - student report card/ "Student Learning Profile" (SLP)
 - display boards in school/ school publications/ school website

Display of Learning Outcomes



Identifying Students with Special Talents (Talent Search) and Grooming of Talents (Talent Development)

Nominate students to:

- participate in inter-school/ territory-wide/ cross-territory/ national/ international competitions
- be student members of the Hong Kong Academy for Gifted Education
- take part in Off-school Advanced Learning Programmes (funded by Gifted Education Fund)/ gifted programmes offered by post-secondary institutions
- join study/ scholarship schemes