

# 全方位學習津貼及學生活動支援津貼

Life-wide Learning Grant and Student Activities Support Grant



查詢 Enquiries

教育局質素保證分部全方位學習組，Life-wide Learning Section, QAD, EDB

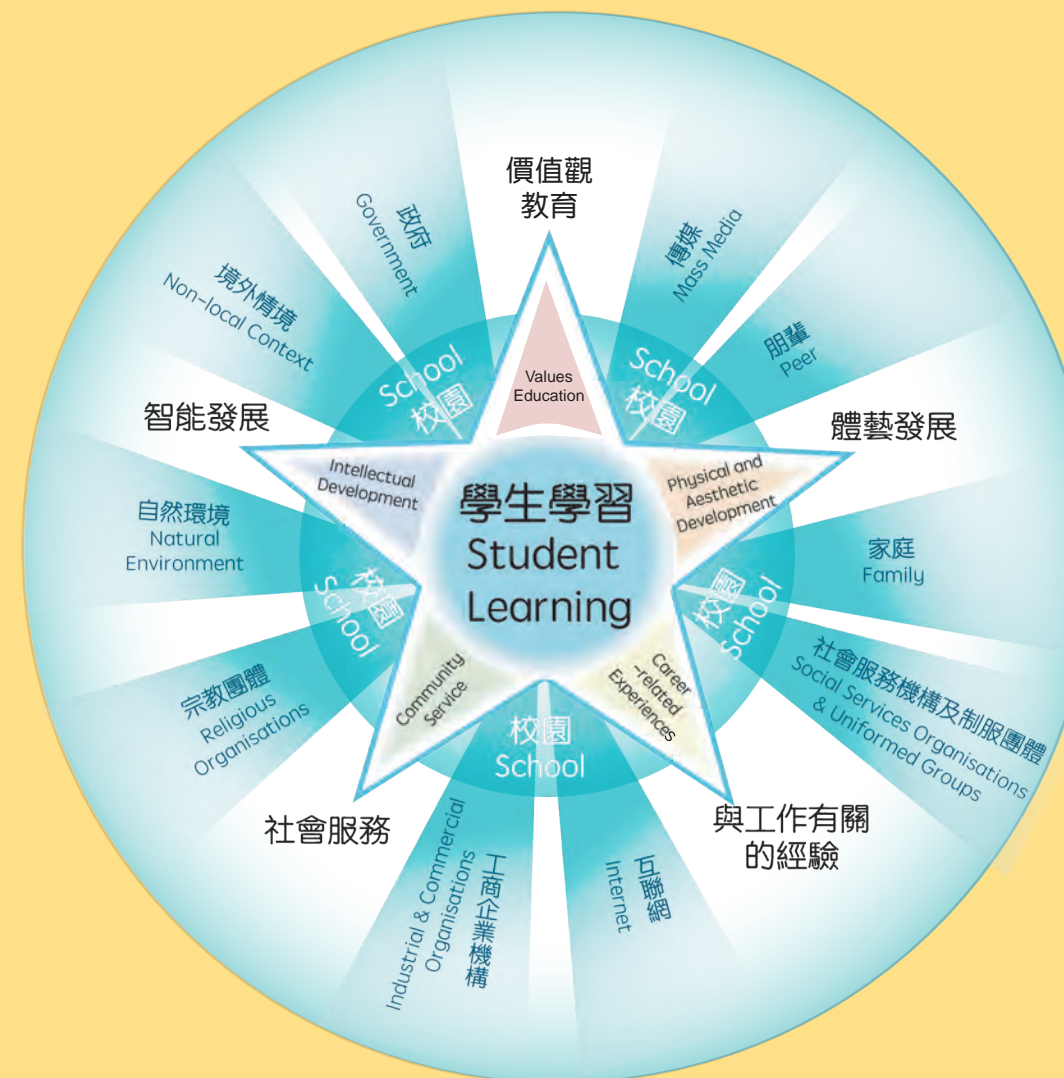
電話 Tel : 3540 7436 / 2892 6490 電郵 Email : lwl@edb.gov.hk

2022

## 甚麼是全方位學習? What is Life-wide Learning?

全方位學習是把學習空間從課室拓展到其他環境的策略。透過教師靈活地利用多樣化的環境和社區資源，配合時、地、人各方面所組成的學習情境，讓學生獲得一般在課堂上難以體會的經驗。這有助學生在不斷變化的社會中，實現全人發展的目標和發展終身學習的能力。

Life-wide Learning (LWL) is a strategy that aims to move student learning beyond the classroom into other learning contexts. It requires teachers making good use of resources and settings available at their schools and in the communities, in order to create suitable learning contexts (combinations of time, place and people) for particular educational purposes. Such experiential learning enables students to achieve certain learning goals that are more difficult to attain through classroom learning alone. It helps students to achieve the aims of whole-person development, enables them to develop the lifelong learning capabilities that are needed in our ever-changing society.



全方位學習策略融入各學習領域/科目和跨課程之中。

LWL strategies are infused into different Key Learning Areas (KLAs) / subjects and cross-curricular activities.

## 從全方位學習到五種基要學習經歷 LWL for the Five Essential Learning Experiences

學生應享有全方位的學習機會，以獲取下列五種基要的學習經歷。學校可利用校外的不同情境，推行全方位學習，以豐富學生五種的學習經歷，各機構亦可提供相關的學習機會。All students should be provided with the LWL opportunities to help them gain the following five essential learning experiences. LWL for the five essential learning experiences can take place outside the school in different contexts, and different organisations may offer related learning opportunities.



### 價值觀教育 Values Education

全方位學習強調學生在課堂以外的真實情境中學習，對提升價值觀教育的成效有幫助，也可讓學生在真實情境中實踐正面的價值觀和態度。

LWL puts emphasis on student learning in real contexts beyond the classroom, which often enhances the effectiveness of Values Education, and allows students to practise positive values and attitudes in real contexts.

### 智能發展 Intellectual Development

全方位學習與學習領域及跨課程學習相輔相成，有助學生掌握與五種基要學習經歷密切相關但難以透過課堂學習達到的學習目標。

LWL could complement KLAs and cross-curricular studies to attain learning goals in areas which are closely linked with the five essential learning experiences but difficult to be acquired through classroom settings.



### 社會服務 Community Service

社會服務有助學生培養對他人的尊重及關心，亦有助培養公民責任感。

Community service helps students nurture respect and care for others as well as a sense of civic responsibility.





### 體藝發展 Physical and Aesthetic Development

體藝發展學習活動透過培養信心、毅力及審美能力，幫助學生建立健康的生活方式及終身學習的基礎。  
Learning activities in physical and aesthetic development help students develop a healthy lifestyle and a foundation for lifelong learning by nurturing confidence, perseverance, and aesthetic appreciation.

### 與工作有關的經驗 Career-related Experiences

與工作有關的活動有助學生獲得職場的最新資訊。這些活動強調誠信、承擔精神及責任感等工作道德操守，令學生了解他們在未來的工作生涯中所要具備的素質。  
Career-related activities enable students to obtain up-to-date knowledge about the world of work. Work ethics such as integrity, commitment and responsibility are emphasised in these activities so that students have a good idea of what will be expected of them in their future working life.



### 全方位學習活動示例舉隅 Examples of the LWL Activities



### 全方位學習津貼 Life-wide Learning Grant (LWL Grant)

由2019/20學年起，政府向公營學校（包括特殊學校）及直資學校發放恆常的全方位學習津貼，以支援學校在現有基礎上更大力推展全方位學習。  
The recurrent LWL Grant has been provided to public sector schools (including special schools) and Direct Subsidy Scheme (DSS) schools starting from the 2019/20 school year to support schools in taking forward, on the present foundation, the LWL with enhanced efforts.

### 適用範疇 Ambit

學校可運用津貼：Schools may deploy the LWL Grant to:

- 組織配合學習宗旨、課程目標、學生心智發展階段的體驗學習活動；  
organise experiential learning activities which are in line with the learning goals and curriculum objectives; as well as appropriate for the cognitive and affective developmental stages of students;
- 豐富學生的五種基要學習經歷；  
enrich students' five essential learning experiences;
- 運用部分津貼購買推行全方位學習所需的設備、消耗品和學習資源；以及  
deploy a portion of the LWL Grant to procure equipment, consumables, and learning resources for implementing the LWL; and
- 支付教師帶領學生活動的開支。  
defray the expenses incurred by teachers for leading student activities.

### 學生活動支援津貼 Student Activities Support Grant (SAS Grant)

教育局於2019年初成立學生活動支援基金，由2019/20學年起運用基金的投資回報提供學生活動支援津貼，讓公營學校（包括特殊學校）及直資學校申請，以支援有經濟需要的學生參與學校舉辦或認可的全方位學習活動。  
The EDB set up the Student Activities Support Fund (SAS Fund) in early 2019 to support students with financial needs to participate in LWL activities organised or recognised by schools. Starting from the 2019/20 school year, the investment return of the SAS Fund has been used to provide the SAS Grant for application from public sector schools (including special schools) and DSS schools.

### 申請津貼方法 Application Procedures

學校須每年遞交申請表格。詳情請瀏覽全方位學習網頁。  
To apply for the SAS Grant, schools should submit the application form annually.  
For details, please refer to the LWL webpage.

### 如何規劃全方位學習活動？ How to plan the LWL activities?



- 教育趨勢 Educational trends
- 校情 School context
- 協調各科組 Communication with teachers of all KLAs
- 連繫課堂所學 Linkage between classroom learning and daily lives
- 教師共識 Consensus among teachers
- 其他 Others

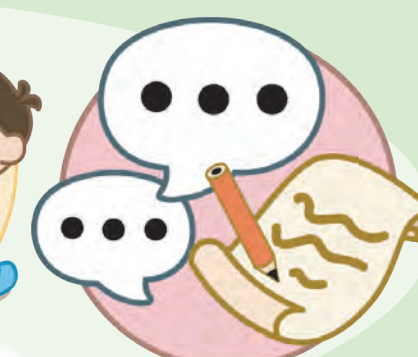
### 如何確保全方位學習活動的質素？ How to ensure the quality of the LWL activities?



- 活動資料  
Information of the activity
- 實地考察  
Field Study
- 與導師商討活動安排  
Communication with the organiser
- 監察活動過程  
Monitoring of the progress



確保學生安全  
Ensuring safety of students



收集持份者意見  
Gathering feedback from stakeholders



- 1 全方位學習 Life-wide Learning
- 2 全方位學習津貼 Life-wide Learning Grant
- 3 學生活動支援津貼 Student Activities Support Grant
- 4 舉辦「全方位學習」活動的有關文件及指引 Relevant documents and guidelines for organising the LWL activities