



## Love, Care Respect Series 2 : Animal Watch \* Respect Life

Vivian Chiu, Education Manager  
Education & Outreach Dept.

2023 March



## April 4 – World Stray Animals Day



There are over 600 million stray animals all over the world that suffer lives of misery — starving, cold, sick, and abused.



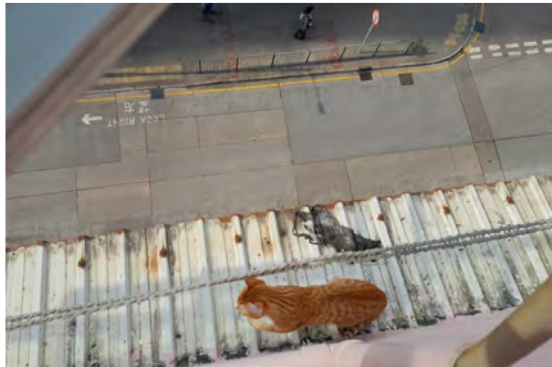
## Stray Dogs



## Danger – Illegal Trap



## Stray Cats



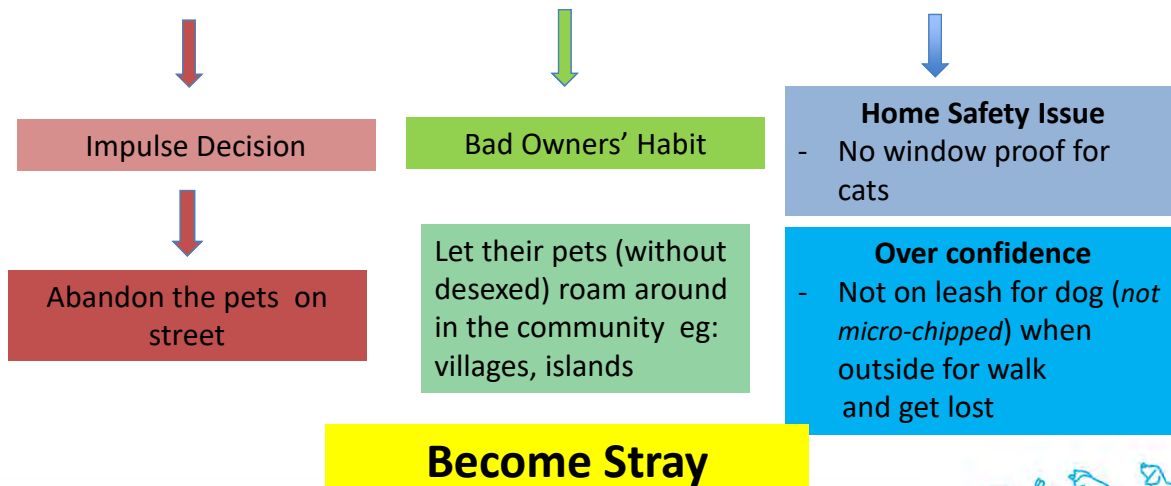
Why there are so many stray cats and dogs?



## Reasons of being stray



### Irresponsible Pet Owner



## Reasons of being stray



### Illegal Bad Breeder



**Bad Breeder / Pet Shop / Online\* → Stray**

### Construction Site/ Warehouse



**→ Stray**





## Cats being abandoned



Pet Shop /Irresponsible Pet Owners



## How SPCA helps the stray in the community



## Inspectorate



**24 hours** Animal Rescue Team

**2711-1000**



## Daily Operations



Patrol Pet Shop

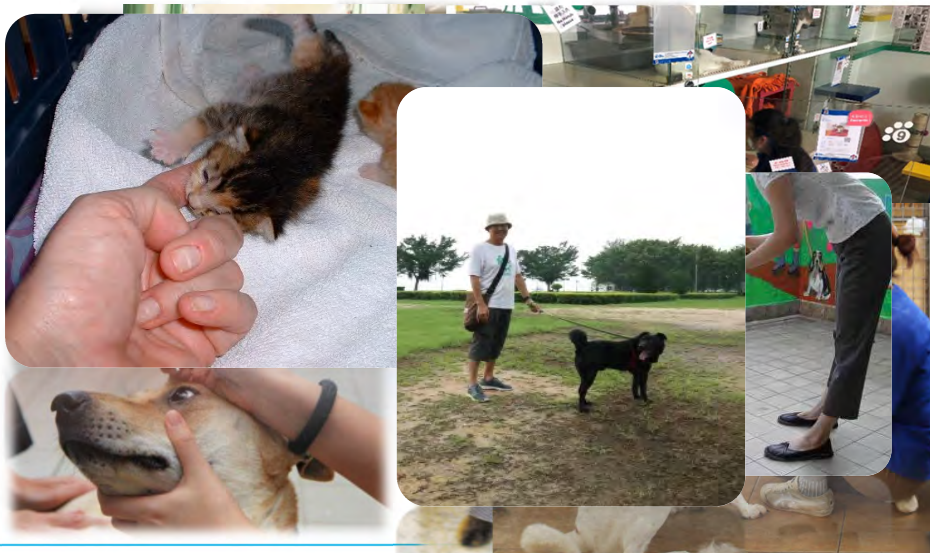
Animal Rescue



Prosecution



## Provide Love and Care for the Homing Animals



## Offer Special Needs



### Foster Parents Programme



**Enquiry: 2232 5524**



## Under the Care of SPCA

Each animal has individual needs



Provide Services  
for the **Community and Animals**





## Help the stray animals

### Trap

- Cooperate with the registered volunteer carers to catch the animals for desexing.

### Neuter

- Provide **Free desexing**
- Vaccination

### Return

- Return to the community where they belong



## Community de-sexing programmes

### Cat Colony Care Programme



2000 launched



### Mongrel Desexing Programme



2014 launched



## Provide support to shelters

Improve the Animal Welfare:

- Facilities Support
- Desexing arrangement
- Rehoming animals



## Respect Life

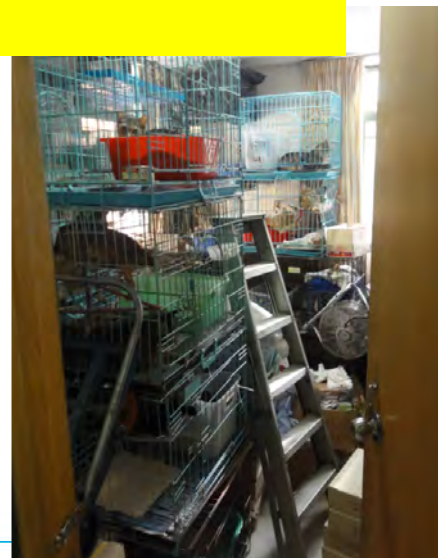
Is stray good / bad ?

If somebody is taking care of the stray, will this be better ?

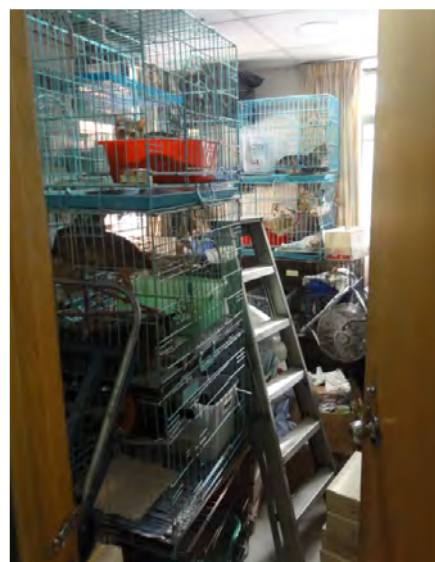


## Hoarders

**Somebody is taking care of the dogs and cats...  
Is this good or bad?**



Which cat is happier?



Sometimes even though overall welfare is "OK" there can be extremes (bad & good) regarding certain needs



Which dogs are happier?



## Animal Welfare

From animal's  perceptive

Care for animal's **feelings** and **experience**





## Relationship with animals

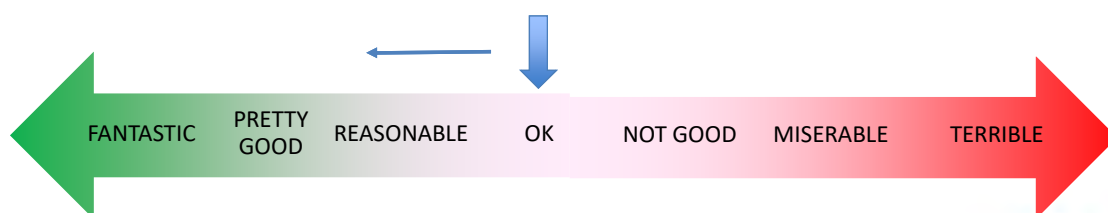
### The Five Welfare Needs



## Animal Welfare – Welfare can be good or bad?



- There is a continuum of welfare from “fantastic” to “terrible” and everything in between.
- It is **vital** when working with animals that one is always striving to improve animal welfare at least to OK-Reasonable and preferably to Fantastic!



## Euthanasia

### Negative

- Ineffective and barbaric (Population Control)



### Positive

- Minimise the pain and suffering of sick animals (*Animal Welfare aspect*)



## Animal Rights

- Fundamentally questions the validity of animal use



**Understand the needs  
of each animal before the take in decision**



**Adopt, don't shop**

**Cap. 139: Public Health (Animals and Birds)  
(Trading and Breeding) Regulations**

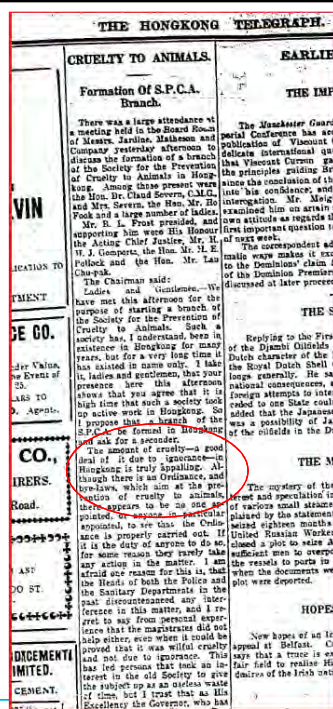
Regulations came into effect on 20 March 2017

**Pet shops encourage:  
impulsive decisions and convey wrong messages**



## SPCA (HK)

- Established on Jun 23, 1921
- HKSPCA - 防止虐待禽畜會
- SPCA (HK) – 香港愛護動物協會



## Education is the only solution to change the mindset of individual towards animals





## Build a community with Respect and Harmony



Responsibility



No feeding,  
no contact

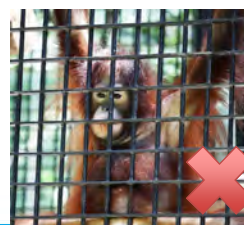
Consideration



Respect



Care



## Educational Publication



2007



For further details of the Humane Education Package, please call the Education Department of SPCA, Tel: 2232 5541, 2232 5526 or visit our website: [www.sPCA.org.hk/eng/education/main.asp](http://www.sPCA.org.hk/eng/education/main.asp). Educators are welcome to download the Package online.

The procedures are as follows:

- 1) Please visit [http://www.sPCA.org.hk/eng/education/edu\\_humane\\_info.asp](http://www.sPCA.org.hk/eng/education/edu_humane_info.asp)
- 2) Please register by filling in the required information
- 3) For "Authorised Code", please input the assigned code:

Assigned Code	
Primary Schools	SPCA_PRI
Secondary Schools	SPCA_SEC
Other organisations	SPCA_OTH

## Primary Level

### Chapter 1: Animal Kingdom – Wild and Domestic Animals

- 1.1 Animals – Wild Animals, Pet and Farm Animals
- 1.2 What Do Animals Eat?
- 1.3 Habitat
- 1.4 Get to Know Animals
- 1.5 Zoo Animals

### Chapter 2: Life Cycle of Animals

- 2.1 Life Cycle of Animals and a Comparison with Humans
- 2.2 Pet Life Cycles – Growing Up
- 2.3 Life Cycle of Individual Pets

### Chapter 3: Learn about Animal Behavior

- 3.1 How Pets Communicate with People
- 3.2 Behaviour of Wild Animals – Hibernation and the Migration of Birds
- 3.3 How to Greet a Dog

### Chapter 4: How Much Care Do Animals Need? – Habitat, Diseases, Food and Grooming

- 4.1 Habitat and the Basic Needs for Survival
- 4.2 Pets' Needs
- 4.3 Suitable Pets

### Chapter 5: How You Can Help Animals?

- 5.1 Responsible Pet Ownership
- 5.2 Do and Do not
- 5.3 Taking Action!

### Chapter 6: Working with or for the Animals

- 6.1 Working with or for the Animals  
– Brief Introduction of Veterinary Surgeon

### Chapter 7: Introducing Animal Welfare Related Organisations

- 7.1 SPCA – The Society for the Prevention of Cruelty to Animals
- 7.2 AFCD – Agriculture, Fisheries and Conservation Department

### Chapter 8: Are We Doing Something Wrong?

- 8.1 What Is Wrong with This Picture?
- 8.2 Should We Go to the Circuses?
- 8.3 Human Activity and the Environment

### Chapter 9: Tell Us about Your Pet

- 9.1 Tell Us about Your Pet

## Secondary Level

### Chapter 1: Why Certain Animals Make Good Pets While Others Do Not

- 1.1 Why Certain Animals Make Good Pets While Others Do Not

### Chapter 2: Laws that Exist to Protect Animals

- 2.1 Laws that Exist to Protect Animals

### Chapter 3: Common Pet Diseases in Hong Kong

- 3.1 Common Pet Diseases in Hong Kong

### Chapter 4: Are We Doing Something Wrong?

- 4.1 Be a Responsible Pet Owner
- 4.2 Should We Eat Shark Fin Soup?
- 4.3 Abuse Cases
- 4.4 Where Does Fur Come From?
- 4.5 Why Are Giant Pandas Threatened with Extinction?

### Chapter 5: What are Animals Rights?

- 5.1 Animals in Circuses

### Chapter 6: Get to Know the SPCA

- 6.1 Inspectorate Team
- 6.2 Veterinary Services Department
- 6.3 Welfare Department
- 6.4 Marketing and Communications Department  
(now known as Community Development Department)

### Chapter 7: Animal Welfare Organisations in Hong Kong

- 7.1 AFCD and Other Animal Welfare Organisations

### Chapter 8: Business vs. Animal Welfare

- 8.1 Pet Shops

### Chapter 9: Pet Population

- 9.1 Pet Population

## Scout Animal Care Badge (愛護動物章)

Office hours: 9 to 1pm or 2 to 6pm

Vivian Chiu – 2232 -5521 [Vivian.chiu@sPCA.org.hk](mailto:Vivian.chiu@sPCA.org.hk)



## Life Education- focus on humans

- Embrace the Symphony of Life
- Developed in 2017
- Primary and above
- At school premises



## Exhibition Foam boards On loan – Primary and Secondary School







## Provide Education Talks for Primary and Secondary

Offer English or Chinese language

Can call our education dept. @ 2232 5541 / 2232 5521

**Vivian Chiu**

Direct Contact: 2232-5521

Vivian.chiu@sPCA.org.hk



# THANK YOU

