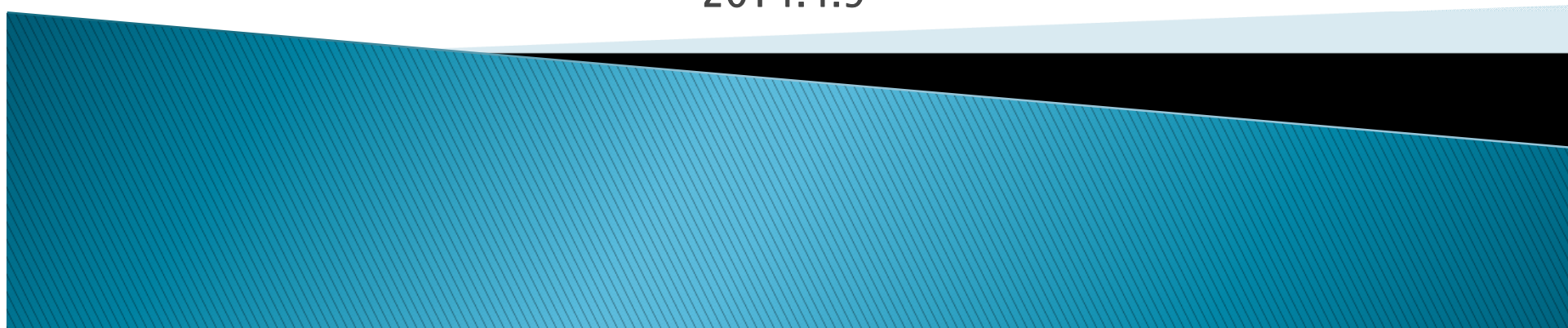



電子學習學校支援計劃

資訊及通訊科技界別簡介會

教育局資訊科技教育組
2014.4.9



序言

▶ 電子學習學校支援計劃  **推！**

▶ 流動學習  WiFi校園 

▶ 先鋒學校



項目津貼



mobile computing devices" reflecting clearly all incomes and expenditures chargeable. Schools should also adhere to the related principles of handling school finance matters and follow proper procedures for

current practice for disbursement of the Composite IT Grant, the rate of grant the number of **approved classes** of your school in the 2013/14 school year, s entitled to have \$<Amount of Grant>. **\$242,500 – \$606,400**

Dear Principal,

Support Scheme for e-Learning in Schools Disbursement of One-off Grant to Schools for Enhancement of WiFi Infrastructure and Acquiring Mobile Computing Devices

Thank you for your application for the Support Scheme for e-Learning in Schools (the Support Scheme). I am pleased to inform you that your school has been selected to be one of the successful school applicants (Schools) under the Support Scheme and will be provided with a one-off grant to enhance the WiFi infrastructure and acquire mobile computing devices. Details of the one-off grant are set out below for your information.

Entitlement

2. In line with the current practice for disbursement of the Composite IT Grant, the rate of grant will commensurate with the number of **approved classes** of your school in the 2013/14 school year, accordingly your school is entitled to have \$<Amount of Grant>.

Ambit

e-learning resources in the 2014/15 school year. To help Schools to meet the very tight schedule, the EDB will provide technical advisory and project management services to assist in the buildup of the WiFi infrastructure. The services will include technical advice on the formulation of user requirements for invitation of quotations/tenders from service providers and monitoring on the work of service providers. More importantly, we recognise the need to prepare Schools on management and pedagogical issues that are essential for successful deployment of e-textbooks or e-learning resources in class. To this end, EDB will organise a series of intensive professional development programmes for school leaders, middle managers and teachers to equip them with the necessary skills and knowledge to face this challenge. Finally, as reflected in the application procedure that great emphasis has been accorded to the engagement of stakeholders which is vital to the sustainable development of e-learning in schools, we also encourage and will work with Schools to enlist the support of stakeholders. We look forward to Schools' active participation in the programmes on professional development and active engagement of stakeholders.

Acceptance of Offer

7. Please complete *Part I of the Appendix* to confirm your acceptance of offer as one of the selected schools under the Support Scheme. A briefing session will be held on **25 March 2014 (Tuesday)** to provide more details on the implementation of the Support Scheme and the support measures highlighted in para. 6. Schools are invited to nominate a maximum of two representatives to attend the briefing session by completing *Part II of the Appendix* and return it to the IT in Education Section by fax or email **on or before 21 March 2014**.


Ambit

不得作其他用途

3. Schools can use the grant to **enhance** or **top up** their IT infrastructure so as to set up the necessary WiFi environment in their school premises (full WiFi coverage in ALL classrooms) for use of e-textbooks in class and to acquire sufficient mobile computing devices for use in class by students.

使用津貼



 中華人民共和國香港特別行政區政府總部教育局 Education Bureau Government Secretariat, Government of the Hong Kong Special Administrative Region The People's Republic of China 本局傳真 Our Ref.: EDB(EID/ITE)F&A/45/6/1 來函傳真 Your Ref.: 電話 Telephone: 3698 3606 傳真 Fax Line: 2382 4403 18 March 2014 The Principal	<p style="text-align: center;">-2-</p> <p>mobile computing devices" reflecting clearly all incomes and expenditures chargeable. Schools should also adhere to the related principles of handling school finance matters and follow proper procedures for accounting and financial control as detailed in the School Administration Guide. All purchases using this grant should be recorded for proper inventory control as appropriate. All books of accounts, receipts, payment vouchers and invoices should be kept for accounting and audit purposes. For procurement of stores and services, Schools are required to follow proper procurement, accounting and financial control procedures as set out in the EDB Circular No. 4/2013, the School Administration Guide and other relevant guidelines. As a guiding principle, the use of government funds should comply with the Education Ordinance, the Education Regulations, other relevant legislation and such other requirements as specified from time to time by the EDB.</p> <p>5. The grant should be spent on or before 31 August 2017. Any unspent balance of the grant will be clawed back according to your school's audited accounts as at 31 August 2017 (i.e. end of the 2016/17 school year), while any deficit will be met by your school's own funds. Expenditures prior to the</p>
--	---

5. The grant should be spent on or before 31 August 2017. Any unspent balance of the grant will be clawed back according to your school's audited accounts as at 31 August 2017 (i.e. end of the 2016/17 school year), while any deficit will be met by your school's own funds. Expenditures prior to the disbursement of the grant will not be subsidized.

I thank you for your application for the Support Scheme for e-Learning in Schools (the Support Scheme). I am pleased to inform you that your school has been selected to be one of the successful school applicants (Schools) under the Support Scheme and will be provided with a one-off grant to enhance the WiFi infrastructure and acquire mobile computing devices. Details of the one-off grant are set out below for your information.

Entitlement

2. In line with the current practice for disbursement of the Composite IT Grant, the rate of grant will commensurate with the number of **approved classes** of your school in the 2013/14 school year, accordingly your school is entitled to have **\$<Amount of Grant>**.

Ambit

3. Schools can use the grant to **enhance or top up** their IT infrastructure so as to set up the necessary WiFi environment in their school premises (full WiFi coverage in ALL classrooms) for use of e-textbooks in class and to acquire sufficient mobile computing devices for use in class by students. Besides, Schools will act as change agent on the WiFi infrastructure buildup process and other value-added services. Regarding the enhancement of WiFi infrastructure, Schools may hire a service provider to design, build and operate the whole infrastructure and to pay for the service by subscription thereafter, effectively through a "subscription" model. Alternatively, Schools may use the funding to design, build, own and operate the WiFi infrastructure.

Funding Arrangement

4. The grant will be disbursed to your school by end-March 2014. Schools should keep a separate ledger account of this "One-off grant for enhancement of WiFi infrastructure and acquiring

managers and teachers to equip them with the necessary skills and knowledge to face this challenge. Finally, as reflected in the application procedure that great emphasis has been accorded to the engagement of stakeholders which is vital to the sustainable development of e-learning in schools, we also encourage and will work with Schools to enlist the support of stakeholders. We look forward to Schools' active participation in the programmes on professional development and active engagement of stakeholders.

Acceptance of Offer

7. Please complete **Part I of the Appendix** to confirm your acceptance of offer as one of the selected schools under the Support Scheme. A briefing session will be held on **25 March 2014 (Tuesday)** to provide more details on the implementation of the Support Scheme and the support measures highlighted in para. 6. Schools are invited to nominate a maximum of two representatives to attend the briefing session by completing **Part II of the Appendix** and return it to the IT in Education Section by fax or email **on or before 21 March 2014**.

Enquiry

8. Should you have any enquiries, please contact the IT in Education Section at 3698 3606.

Yours sincerely,

(M SHE)
for Secretary for Education

專業發展



協助學校落實推行電子學習



- 資訊科技教育策略及支援措施
- 學校策劃及推行電子學習的經驗分享
- 「自攜移動裝置 - 許可使用策略」工作坊



本計劃的學校校長、中層管理人員
和教師將獲優先考慮



服務要求及模式



WiFi覆蓋全校課室



足夠流動電腦裝置
補充「自攜裝置」



租賃 vs 自置
89 10

工序

4月

聯絡學校

學校復活節假

預備技術規格文件

5月

採購程序

6月

審核建議書

選出承辦商

7月

工程

8月

工程

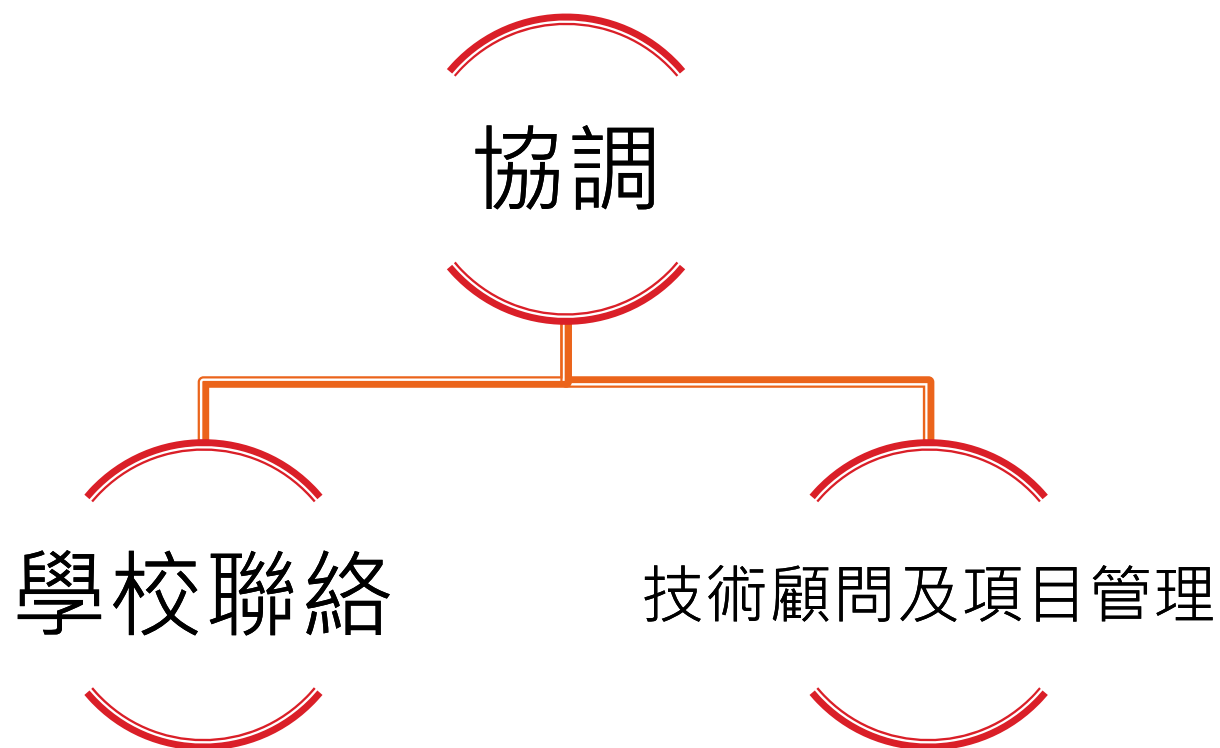
29



教育局提供給學校的支援



專業分工，各展所長
減輕教師非教學工作量





Specifications:

- ☒ ✓
- ☒ ✓
- ☒ ✓
- ☒ ✓
- ☒ ✓



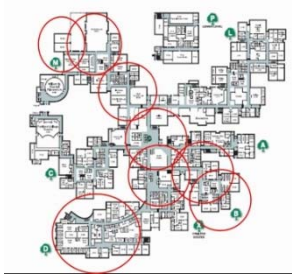
分析建議書的利弊



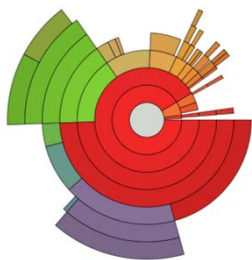
學校



技術顧問及項目管理



覆蓋範圍、用戶數目、使用情況、特別要求.....



連結內聯網、學習管理系統、現有無線網絡及其他基建設備、其他服務??



招標簡報及現場視察



施工日期

技術顧問及項目管理



項目管理



工程驗收
服務至 2014.9.30



關注事項.....



確保 2014/15學年
可推行電子學習 !!!!



技術方案 – 由服務供應商提供
技術顧問分析可行性和利弊
供學校參考



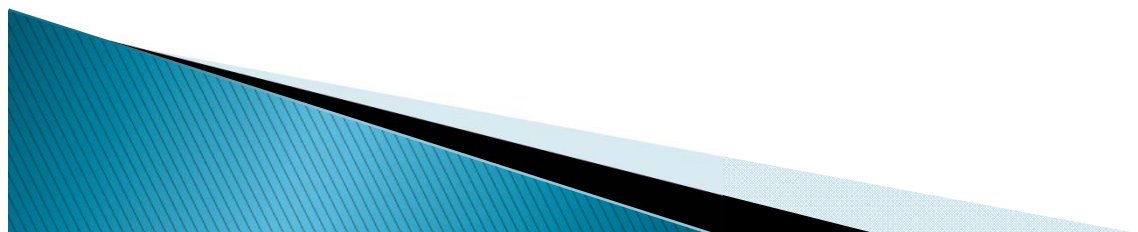
分目報價及採購 – 利便購買
增值服務

租賃模式 – 月/年租 x 租期

資訊



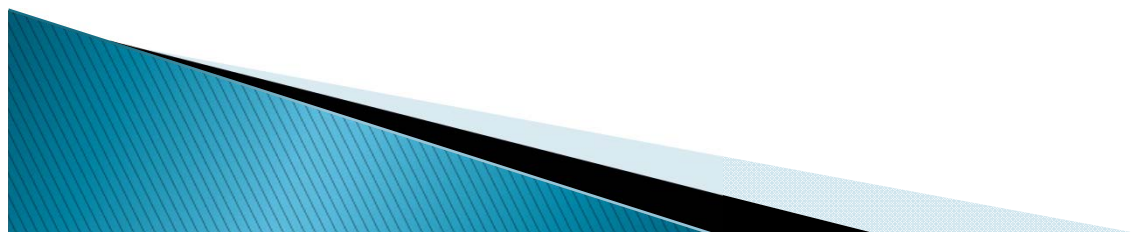
www.edb.gov.hk/ited/supportscheme



伙伴分享



WaaSchool 伙伴計劃 經驗分享



謝 謝

答問時間

