


# How To Plan and Rebuild A Highly Effective IT Infrastructure





Before you start to re-build the school IT infrastructure, what questions you need to ask?



- 
- What are the problems of the existing infrastructure?
  - Should we build the whole new one? Or just replace some parts of the existing one?
  - How much do we need to spend?
  - How to design the new infrastructure?
  - What kind of technologies should we use? (CAT6, Optical Fibre, n/AC...)
  - How long can the new infrastructure sustain?
  - Is the new infrastructure expandable?
  - How can the new infrastructure enhance teaching and learning?
  - How to choose a suitable vendor?
  - Separated network or integrated network?

# Steps and Procedures

Fine Tuning

Testing

Project Launching

Tendering and Procurement

Specification Drafting

Needs Analysis





# What is Highly Effective IT Infrastructure in a School Environment?

# Stable Computer Network

- Use Good Quality Equipment

# High Speed

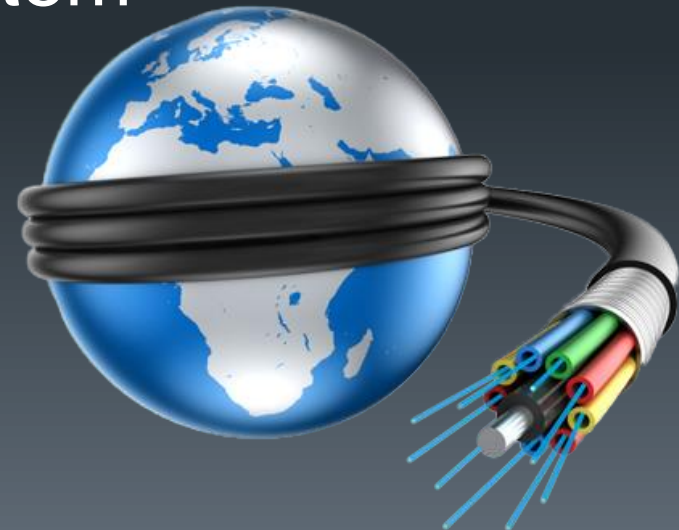
- High Speed Wired or Wireless LAN
- High Speed Broad Band

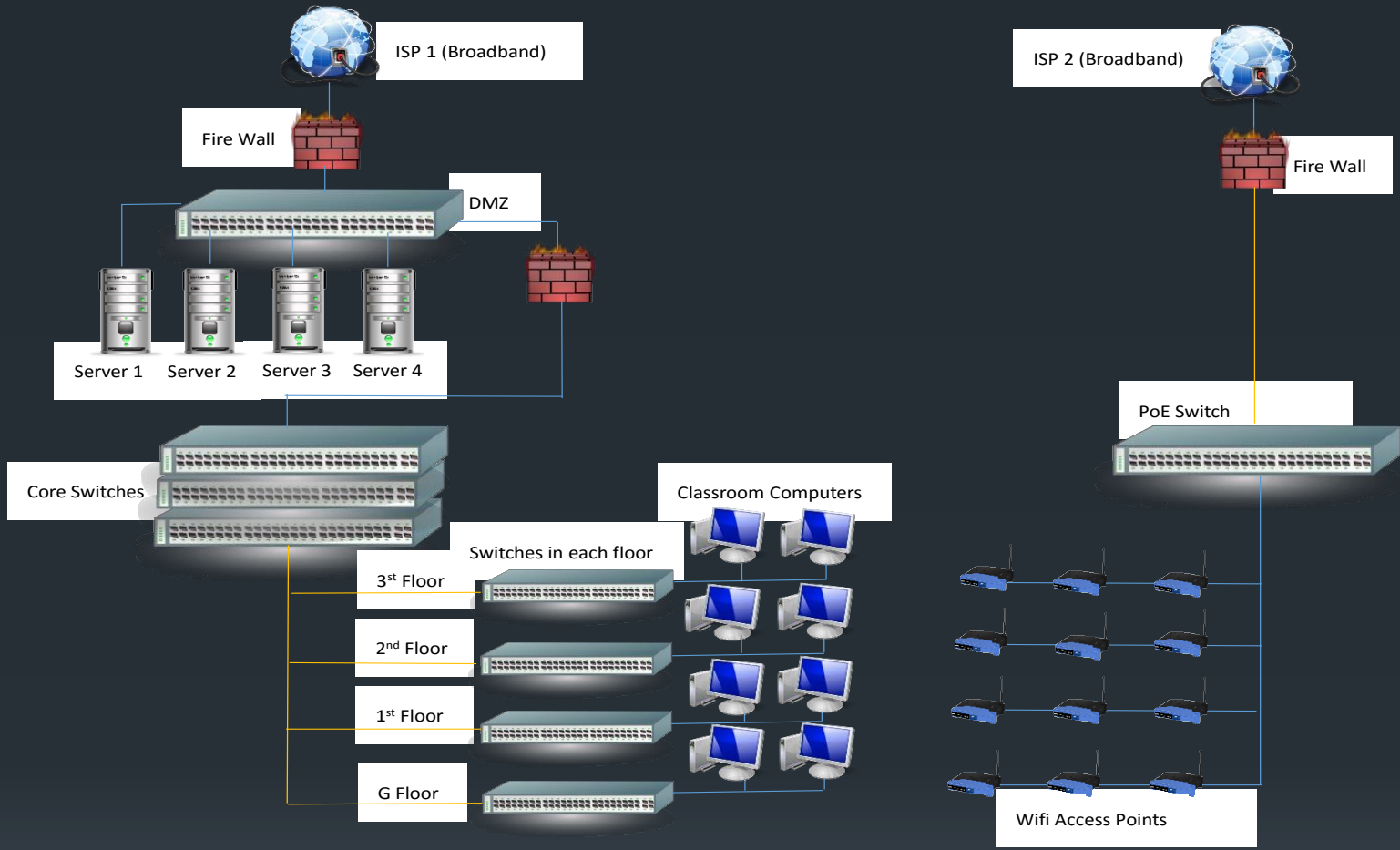
# High Capacity

- High Capacity Storage System

# High Accessibility

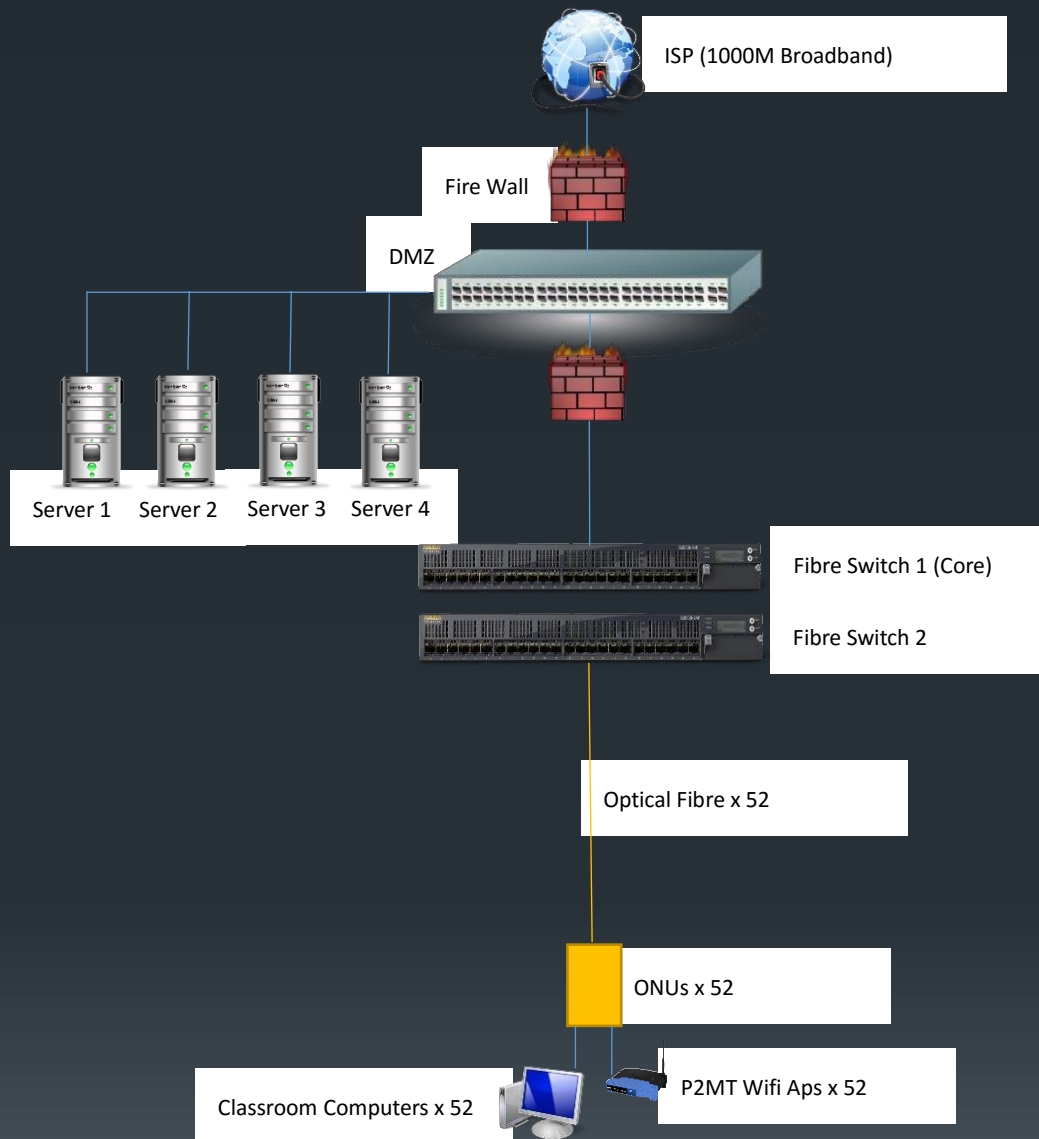
- WIFI Anywhere
- Cloud-Base
- Mobile Learning Devices



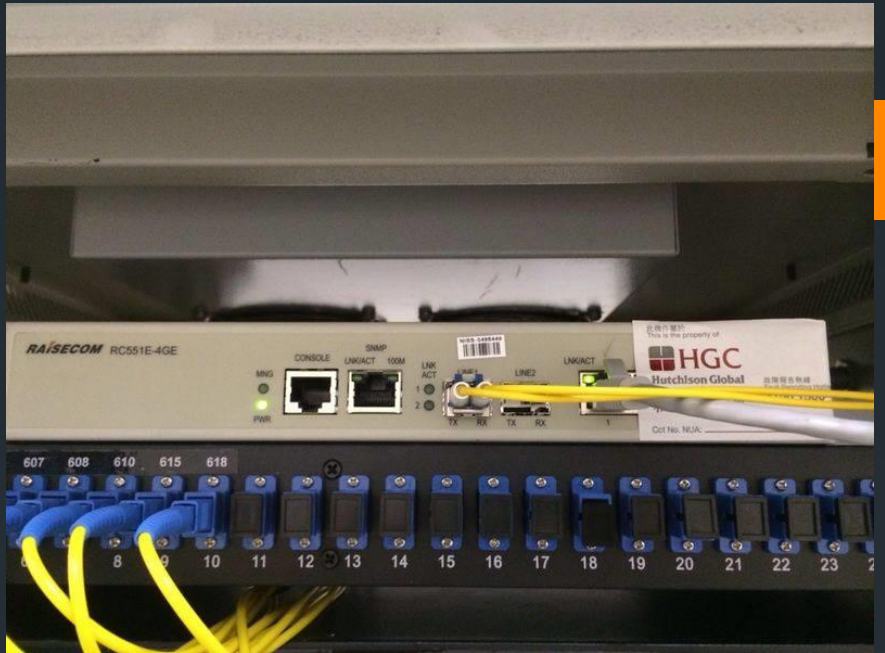


— Coaxial Cable CAT5 / CAT6  
 — Optical Fibre





— Coxial Cable CAT5 / CAT6  
 — Optical Fibre







# Tsung Tsin College's Infrastructure



- Single Mode Optical Fiber LAN  
(Ultimate Speed)
- High Performance WIFI AP In All Classrooms  
and Special Rooms
- Use Private Cloud Storage System
- 100M → 1G Broad Band Service
- IP Phones For All Staffs (Max 216 Users)