



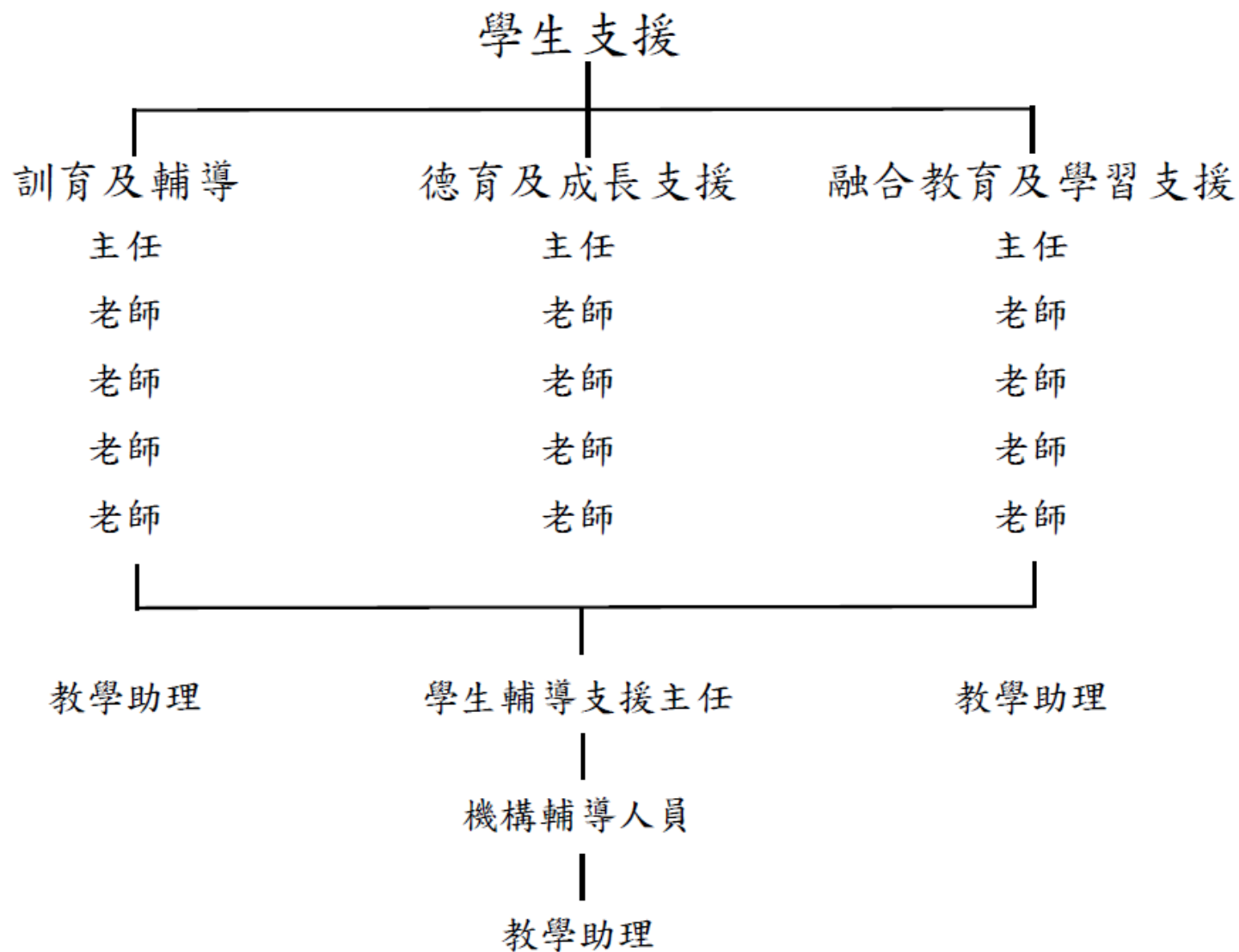
觀塘官立小學 (秀明道)

學生成長支援

學校管理與學生輔導人員的角色

學校發展需要 及 行政分工

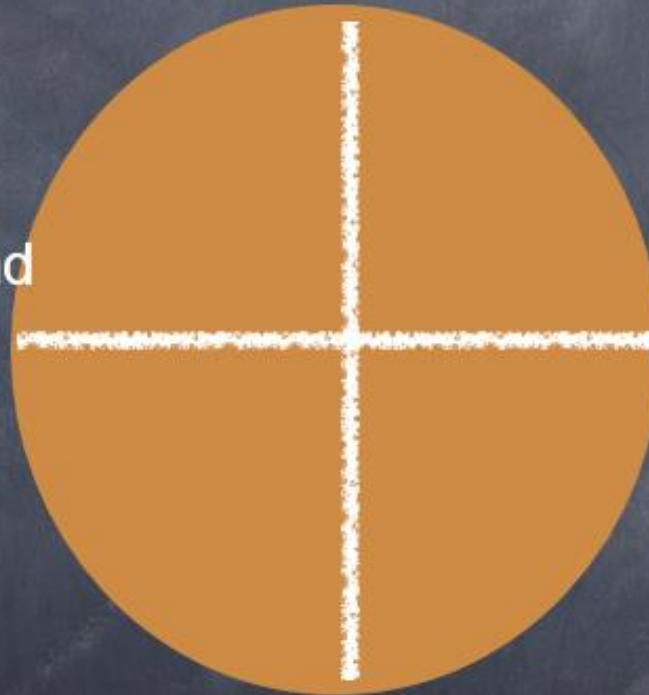
學校學生支援行政架構與分工



Discipline and Guidance

school order and safety

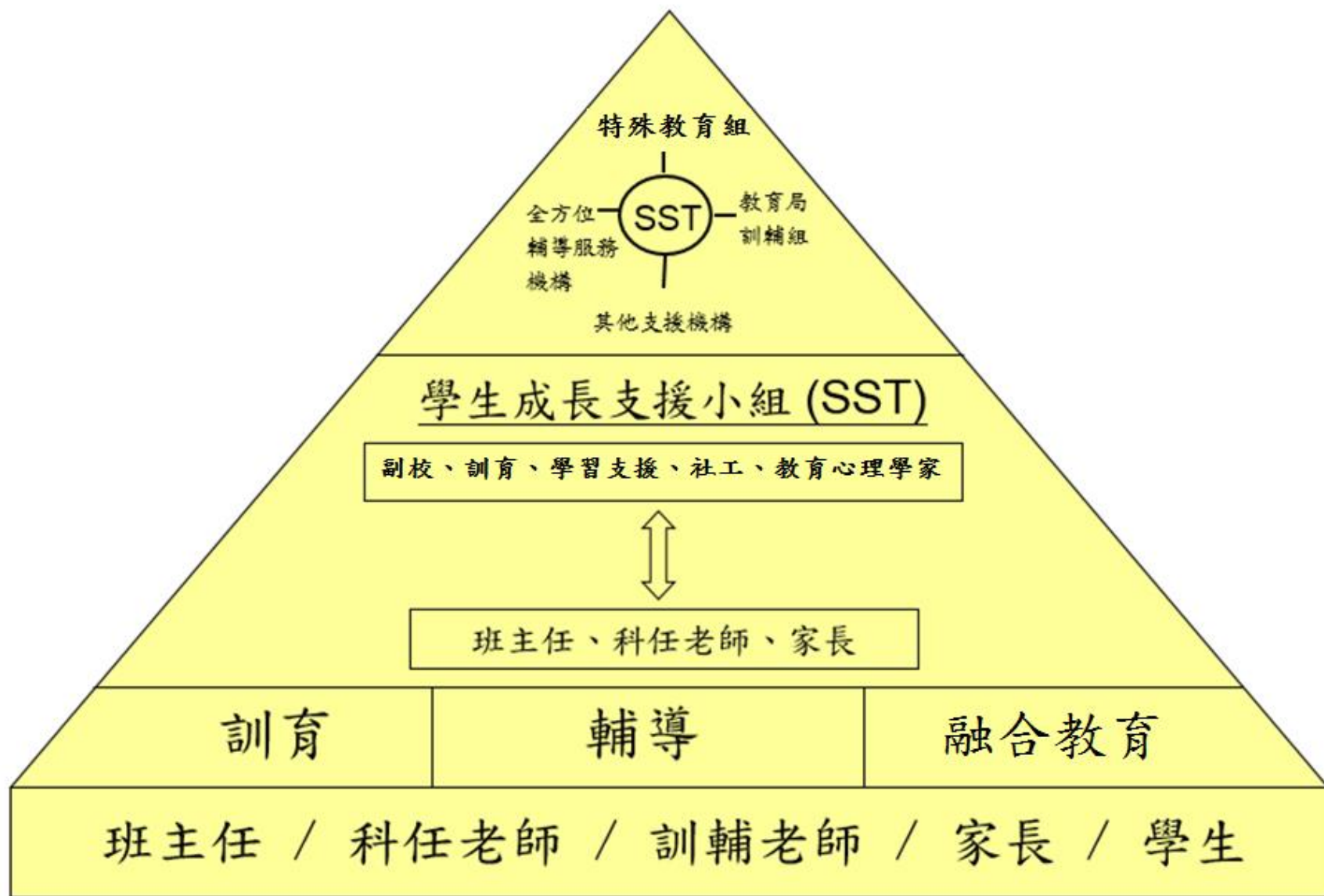
whole school dev and
preventive
program



individual
beh problem
and special need

coordination ,
admin and management

學生個人成長支援



Deployment & Management

Types of Deployment

- Hire Package of Student Guidance Service from NGO including SGP (全方位學生輔導服務) (EDB circular EDBC002/2012)
- Recruitment of social worker as SGP (Student Guidance Personnel)
- Hire Consultation Services

Limitation and Problems

1. No reply from tendering exercise
2. Mandatory requirements and market supply
3. Not suitable SGP provided by agency but with backup and professional supervision
4. Flexibility in recruiting SGP according to school situation
5. School based supervision and no agency backup
6. Advise: Both recruit 1 SGP and hire SG service

Student Guidance Supporting Officer

What is the
SGSO's
Role?

Engaged in the School Student Support System

Core Member Contributes in Strategic Planning

**Developmental and Preventive Programmes in
Personal Growth**

Teamwork Building with Teachers

**Better Understanding in Case Assessment of
Students' Individual Needs**

Teacher Training

Duties of SGSO (Ref from SG Service Guidelines)

To cater for the developmental needs of all students;

To provide preventive and developmental Personal Growth Programs;

To support the Curriculum of Moral and Values Education;

Individual counselling and group therapy with proper case record and frequent case conferences;

Provide students related consultation service and training for teachers;

Duties of SGSO (Ref from SG Service Guidelines)

Early identify and intervene students in need;

Timely referrals of students in need to receive appropriate support services;

Providing services for students and parents on crisis management, counselling, small group and large-scale activities, referral services and mobilizing community resources;

Assisting school to develop guidance and counselling policies and system, designing and implementing the Personal Growth Curriculum;

Promote home-school cooperation.

Job Requirement of SGSO

(Ref from SG Service Guidelines)

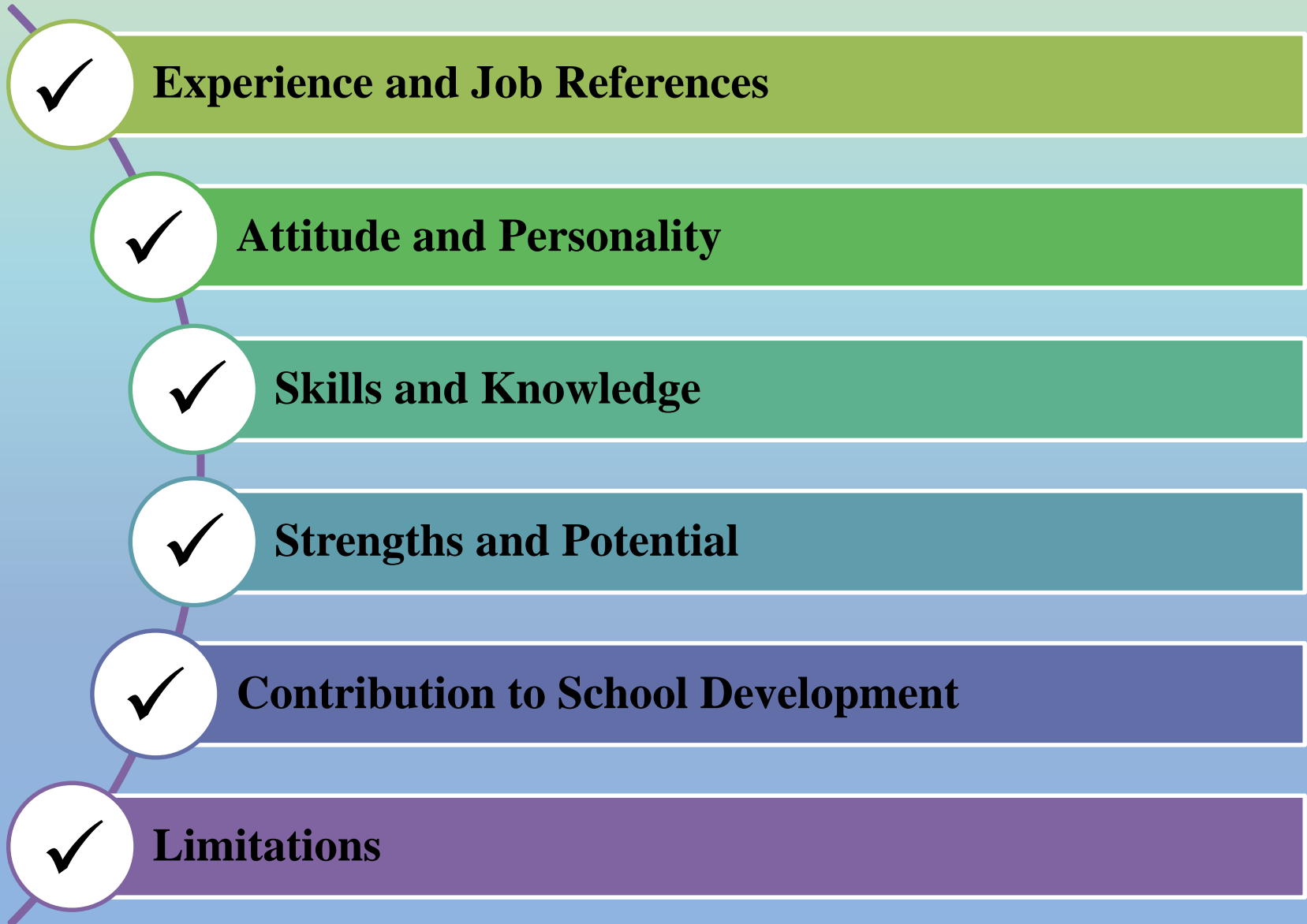
Qualification

- **Holder of a higher diploma/ diploma from a Hong Kong tertiary educational institution in social work, student guidance and counselling or equivalent; OR**
- **Degree holder from a Hong Kong tertiary education in social work, student guidance and counselling or equivalent**

Experience

- **(?) years of social work experiences in primary school on Student Guidance and Counselling Service must be required; OR**
- **(?) years of social work experiences in service for young people must be required**

Attributes of Student Guidance Supporting Officer



Supervision and Management

Clarify mutual expectations

Senior teacher as the key persons to
promote collaboration

Work within school system

Monitoring vs Supervision

Appraisal system

What do we need to consider before recruiting a SGSO?

Think before we act.

School needs and development priorities

Existing practices – strengths and improvement areas

Professional supervision vs effective Management

...

Thank You