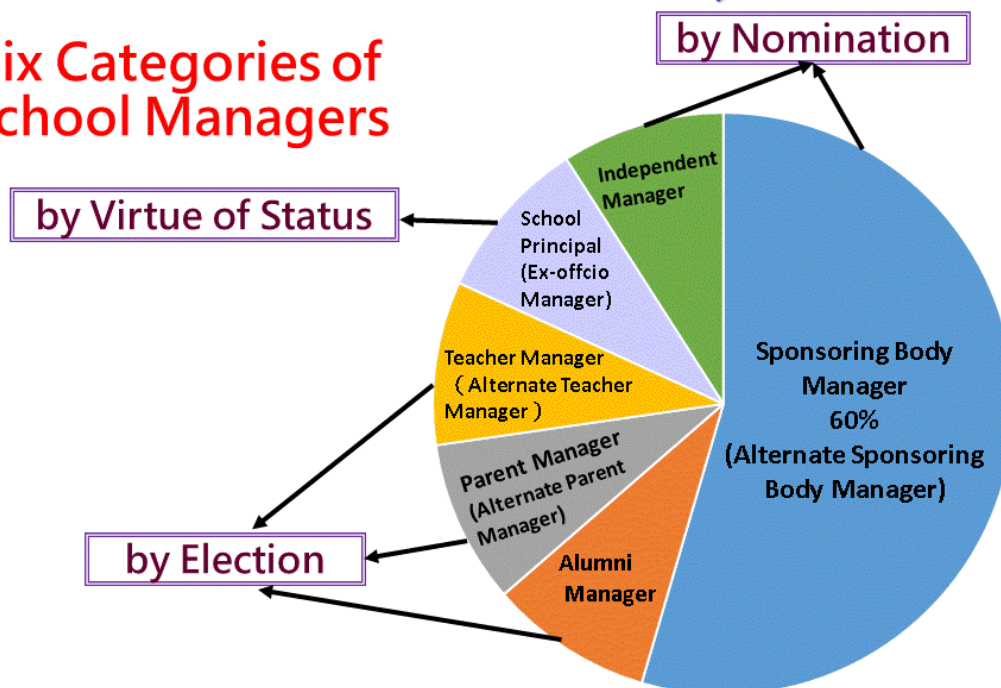


Composition of Incorporated Management Committees and Nominations of Six Categories of School Managers

1. Composition of Incorporated Management Committees (IMCs):

Composition of Incorporated Management Committees (IMCs) (Section 40AL of the Education Ordinance)

Six Categories of School Managers



Composition of IMC	Number	Alternate Manager
Sponsoring Body Manager	Not exceeding 60% of the maximum number of managers*	Not more than one
School Principal	Ex-officio manager	Not applicable
Teacher Manager	Not less than one	One where the constitution allows the nomination of not more than one teacher manager
Parent Manager	Not less than one	One where the constitution allows the nomination of not more than one parent manager
Alumni Manager	One or more where such manager(s) is/are nominated	Not applicable
Independent Manager	Not less than one	Not applicable

*In calculating the maximum number of sponsoring body managers, all alternate managers shall not be counted.

2. Nominations of six categories of school managers:

Category of school managers specified in section 40AL of the Education Ordinance	By election	Manner of Nomination	Alternate Manager may be nominated	Related provision in the Education Ordinance
Sponsoring Body Manager	✗	- Nominated by the school sponsoring body subject to the constitution of IMC	✓	Section 40AM
School Principal	✗	(Ex-officio manager)	✗	Section 40AL(2)(b)
Teacher Manager	✓	- Voting by secret ballot - All teachers have equal right of candidature - All teachers have equal voting right	✓	Section 40AN
Parent Manager	✓	- Election conducted by the recognised parent-teacher association - Voting by secret ballot - All parents have equal right of candidature - All parents have equal voting right	✓	Section 40AO
Alumni Manager	✓	- Election conducted by the recognised alumni association or - Nominated by IMC subject to its constitution (if no person is nominated in the alumni manager election conducted by the recognised alumni association)	✗	Section 40AP
Independent Manager	✗	- Nominated by IMC subject to its constitution	✗	Section 40AQ

Reference:

§ Sections 40AL, 40AM, 40AN, 40AO, 40AP and 40AQ of the Education Ordinance